

**EAST WILLIAMSON COUNTY HIGHER EDUCATION CENTER - TAYLOR  
BUILDING EMERGENCY PLAN**

- 1) Building Name & Number: EWCHEC - Taylor -- 13
- 2) Emergency Management (EM) Liaison:
  - Name – Jacqueline Miller
  - Campus Address – ETCT 120
  - Phone Number – (254) 298-8960
  - Email – millerj942@templejc.edu
- 3) Alternate (EM) Liaison:
  - Name – Suzanna Bachman
  - Campus Address – ETCT 120
  - Phone Number – (254) 298-8954
  - Email – hernandezs408@templejc.edu
- 4) Departments:
  - a. Administration:
    - Contact Person – Robbin Ray
    - Campus Address – Hutto Campus Office B123
    - Phone Number – (512) 759-5610
    - Email – robbin.ray@templejc.edu
  - b. Facility Services:
    - Contact Person – Scott Benson
    - Campus Address – Hutto Campus Office - A105
    - Phone Number – (512) 759-5945
    - Email – scott.benson@templejc.edu
- 5) Evacuation Routes: (see map)
- 6) Emergency Assembly Point – outside the facility:
  - a. West side of the front parking lot at 5<sup>th</sup> Street and Main (near decorative landscaping of trees and shrubs).
  - b. Back corner parking lot corner of 6<sup>th</sup> & Porter
- 7) Designated Shelter Area – inside the facility:
  - a. Back hallway with overflow in rooms
  - b. North classes – Sim Lab for BCE programs
  - c. Internal or back hall classes (ECTC 122, ECTC 142 and ECTC 103) south front hall
- 8) Location of Emergency Equipment:
  - a. Fire extinguishers:
    - In the south hallway across from room 131
    - In the center hallway across from room 123

- In the north hallway across from 113
- In the kitchen which is right off of the Main Office room 120

b. First aid supplies:

- Inside the door of room 141 Chemistry Lab
- Inside the Chemistry Prep Lab room 141A near the doorway that can enter the Chemistry Lab
- Inside the door of room 142 General Science
- Inside the door of 144 Microbiology
- In the Main Office room 120 on the back wall
- In the Faculty Office room 112 near the door

c. Automatic external defibrillators:

In hallway between Legacy ECHS and Temple College, hung between rooms 104&105

9) Potential Fire Hazards (i.e., combustible materials, flammable gases, etc.):

Flammable chemicals in chemistry and microbiology labs

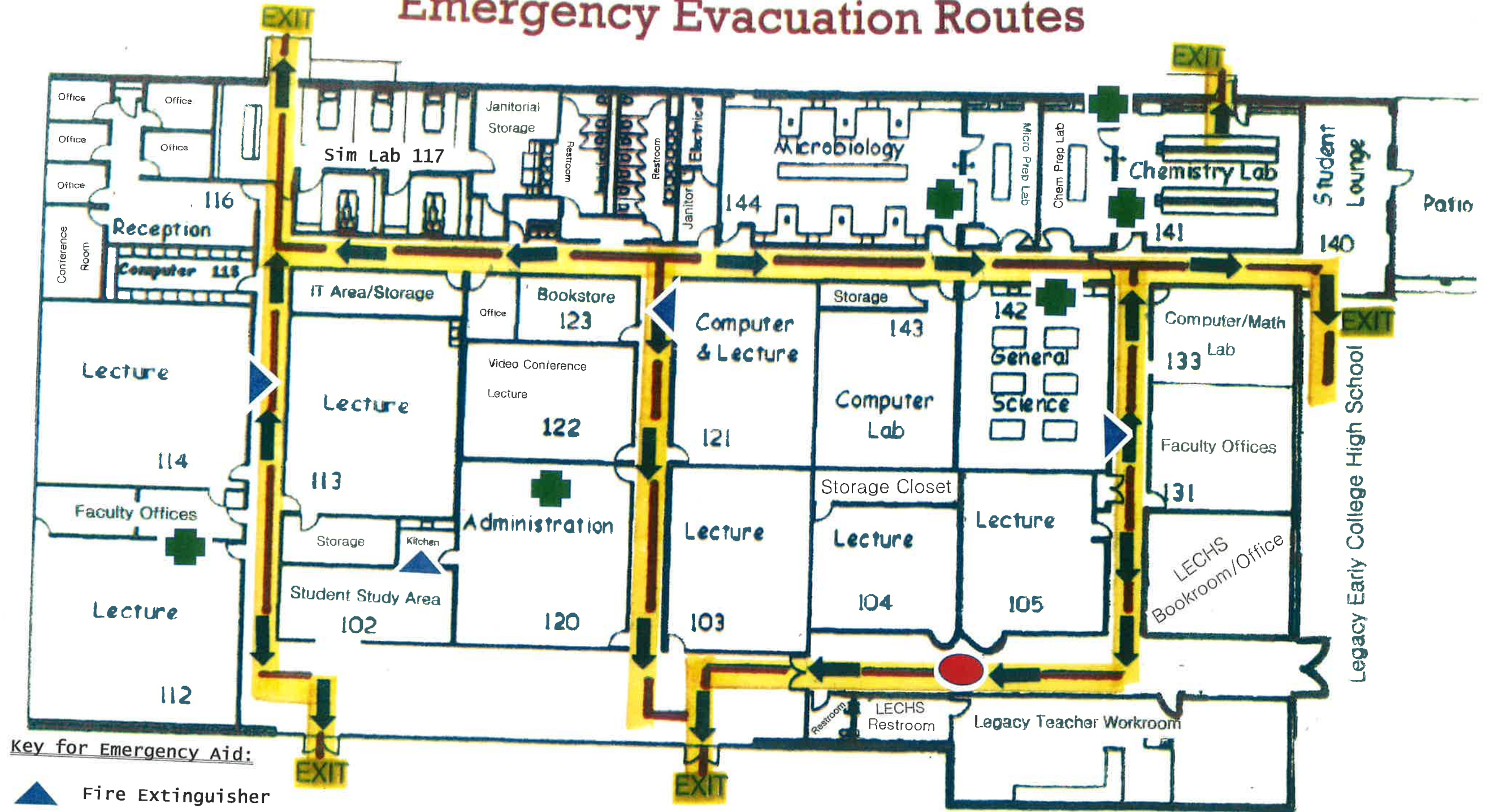
10) Listing of Critical Records and/or Equipment:

None



# Temple College at Taylor

## Emergency Evacuation Routes



Key for Emergency Aid:

- ▲ Fire Extinguisher
- + First Aid Kit
- AED Automatic External Defibrillator