

Board of Trustees

Constituents of the Taxing District and Service Area

Board of Trustees

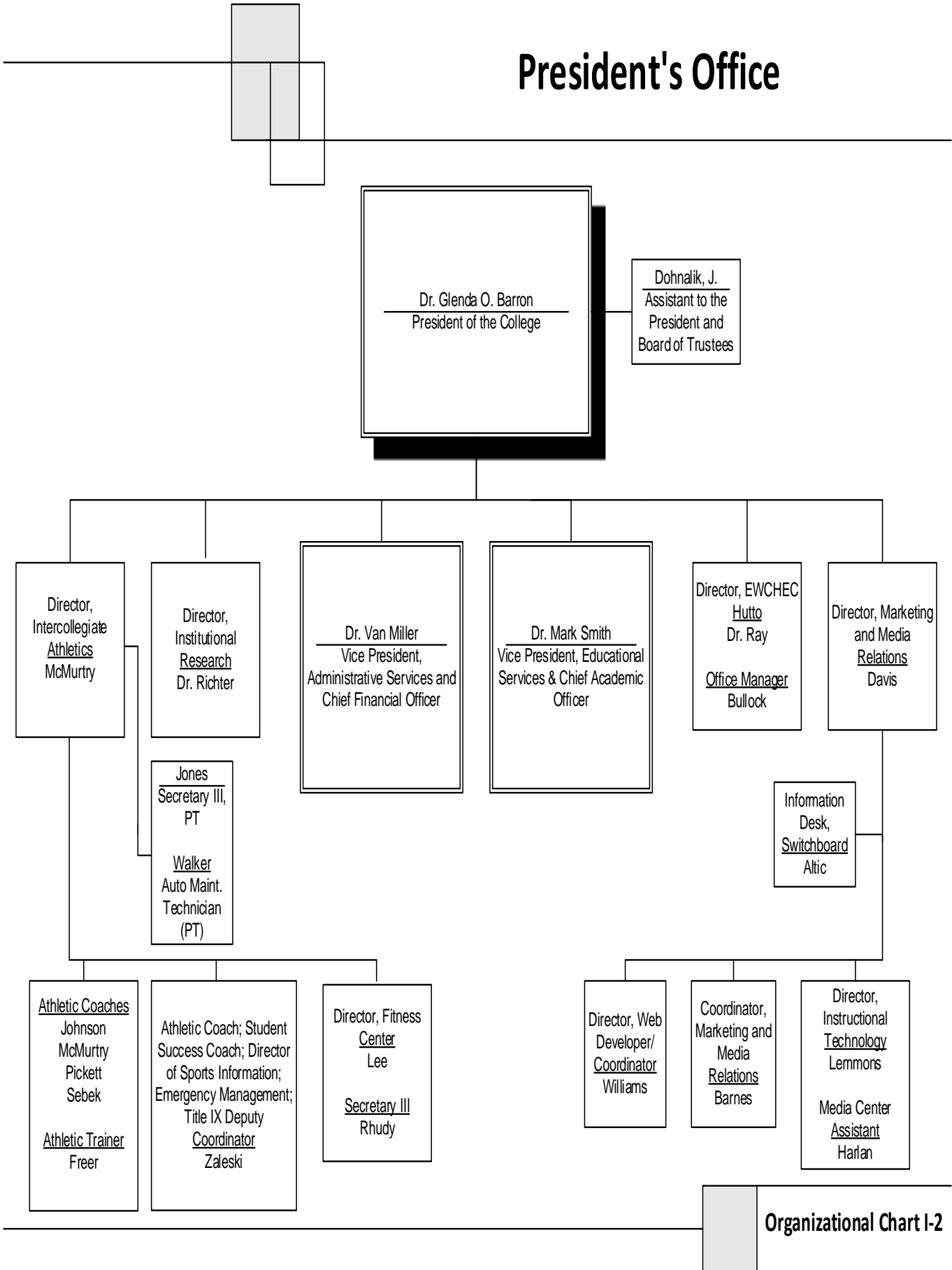
Katie Burrows
Chair of the Board of Trustees

Bob Browder
Vice-Chair

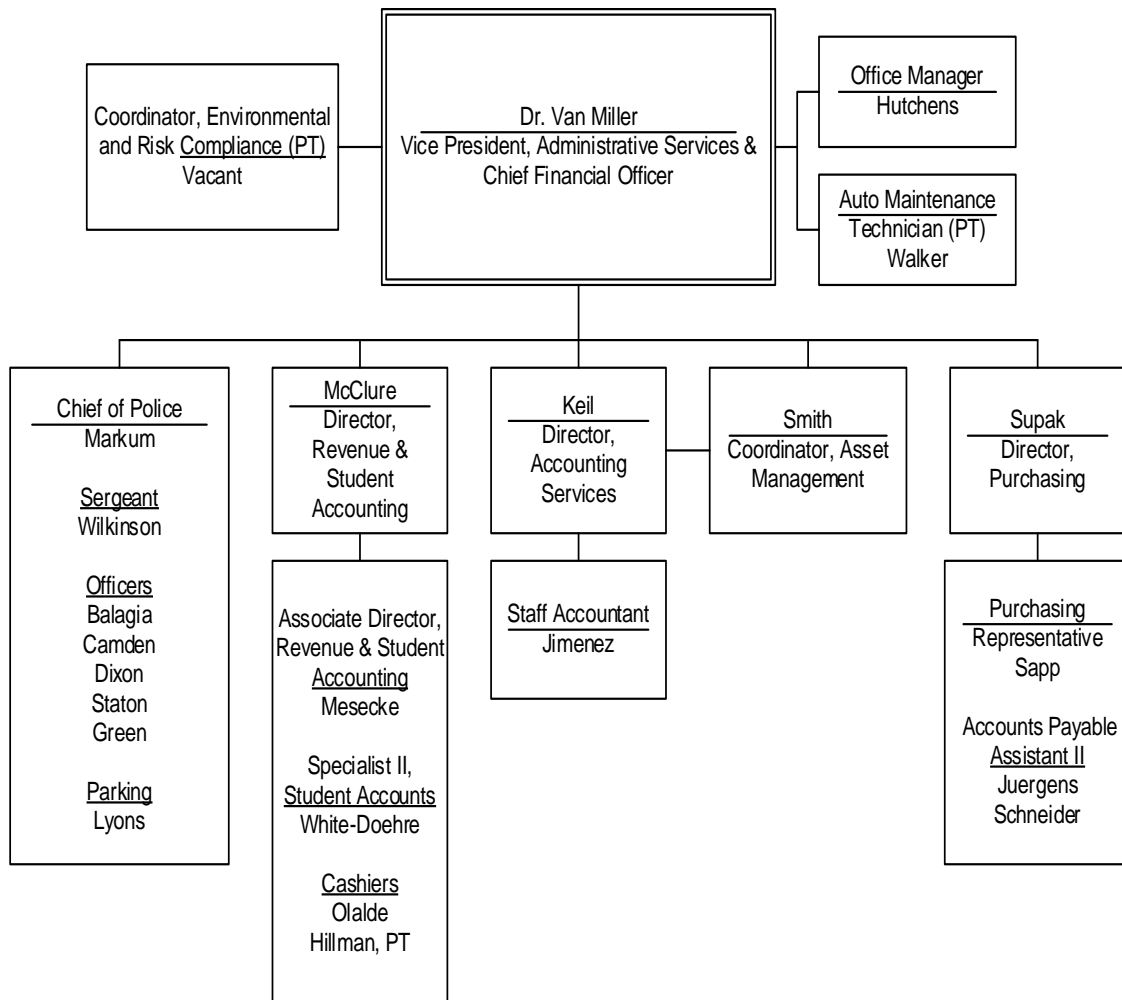
J. Harry Adams
Secretary

John Bailey
Dr. Alejandro C. Arroliga
Steve H.Niemeier
Lydia Santibanez
Larry J. Wilkerson
Dr. Andrejs Avots-Avotins
Members

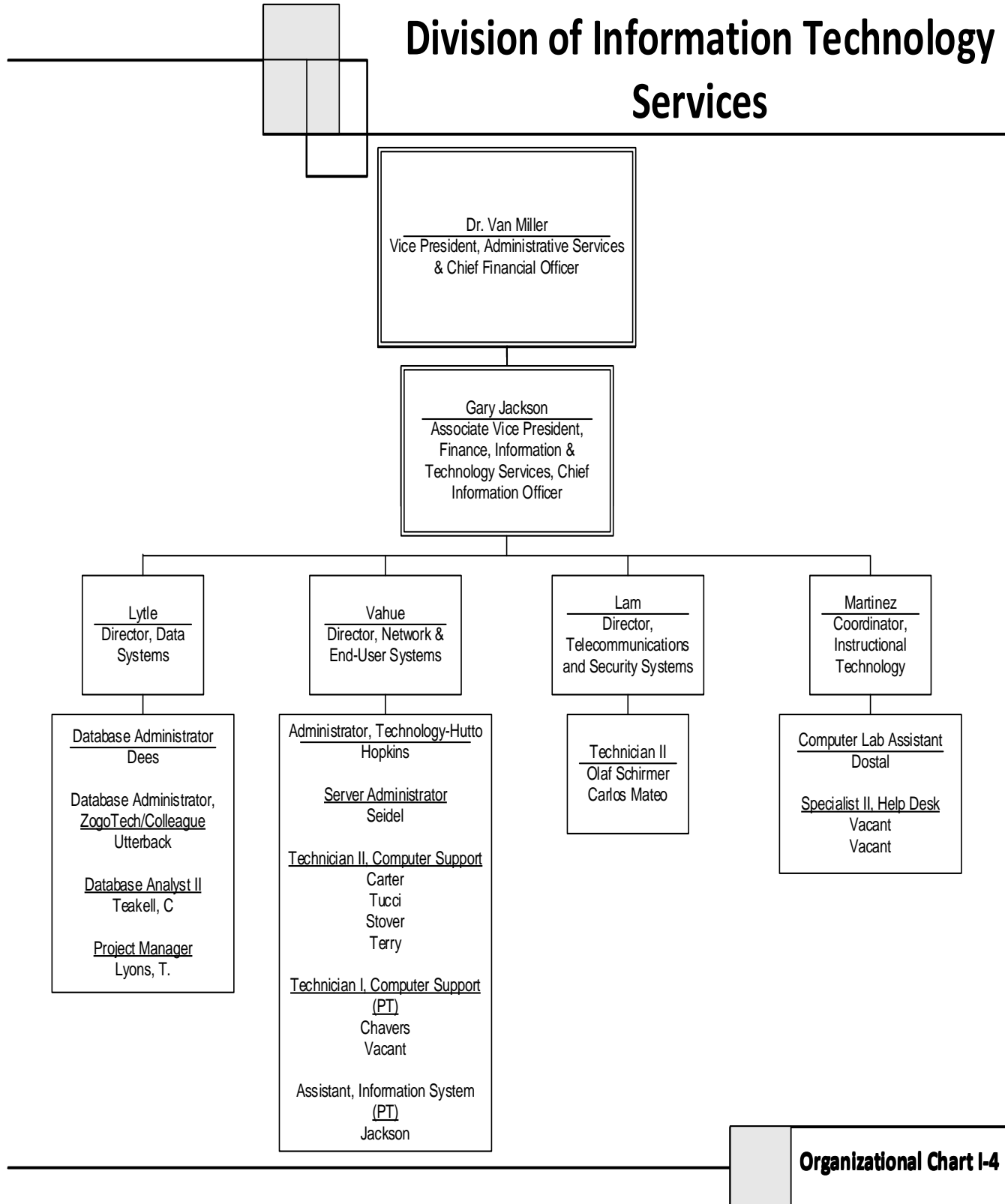
President's Office



Administrative Services

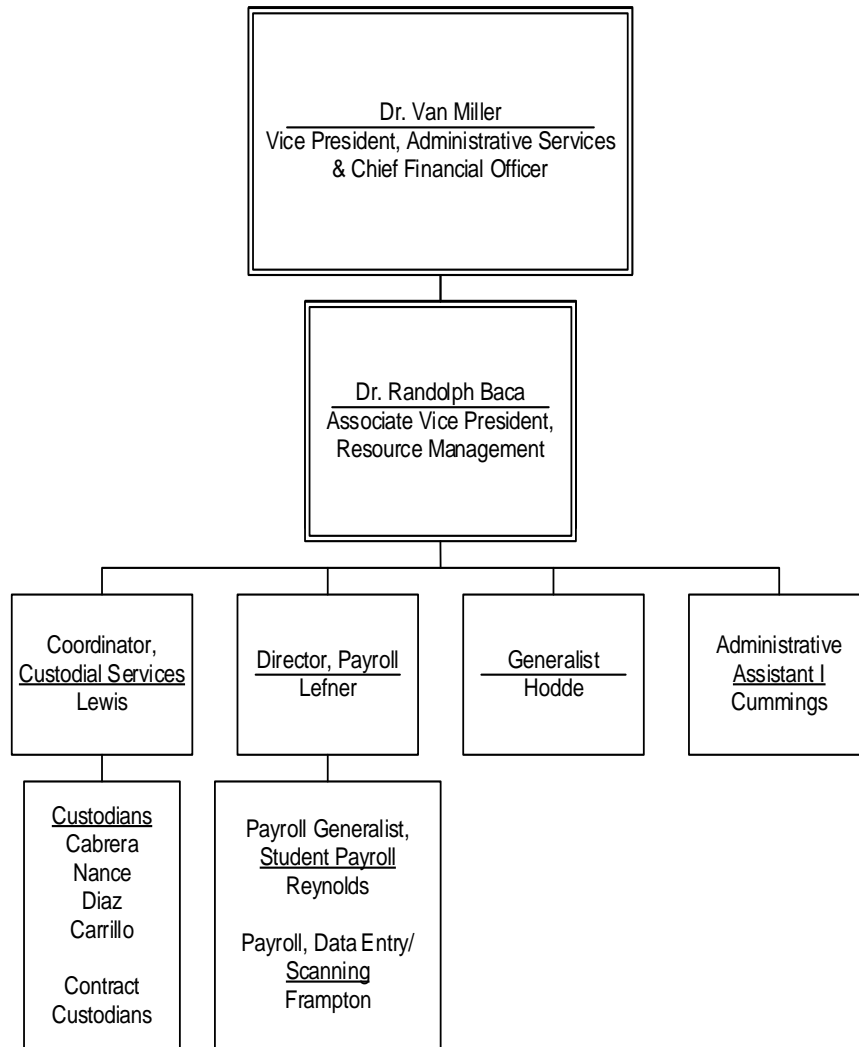


Division of Information Technology Services

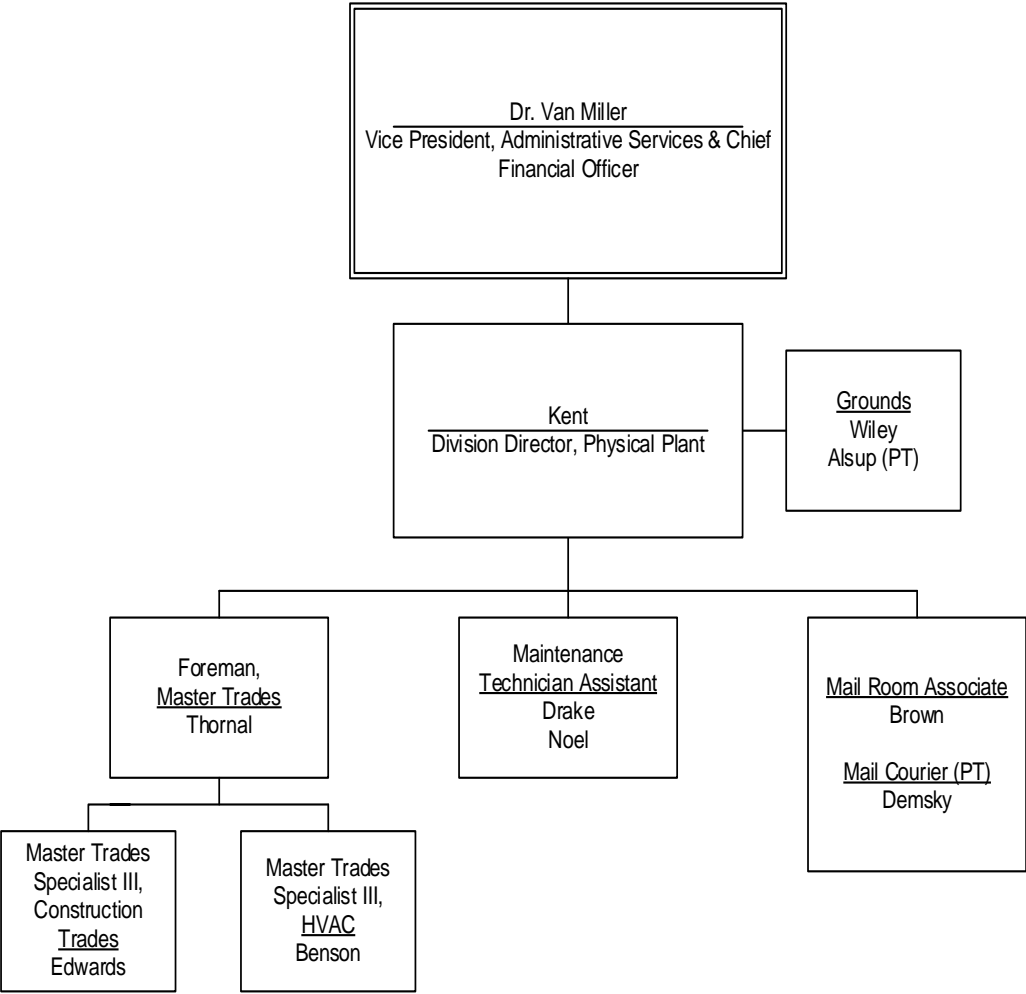


Organizational Chart I-4

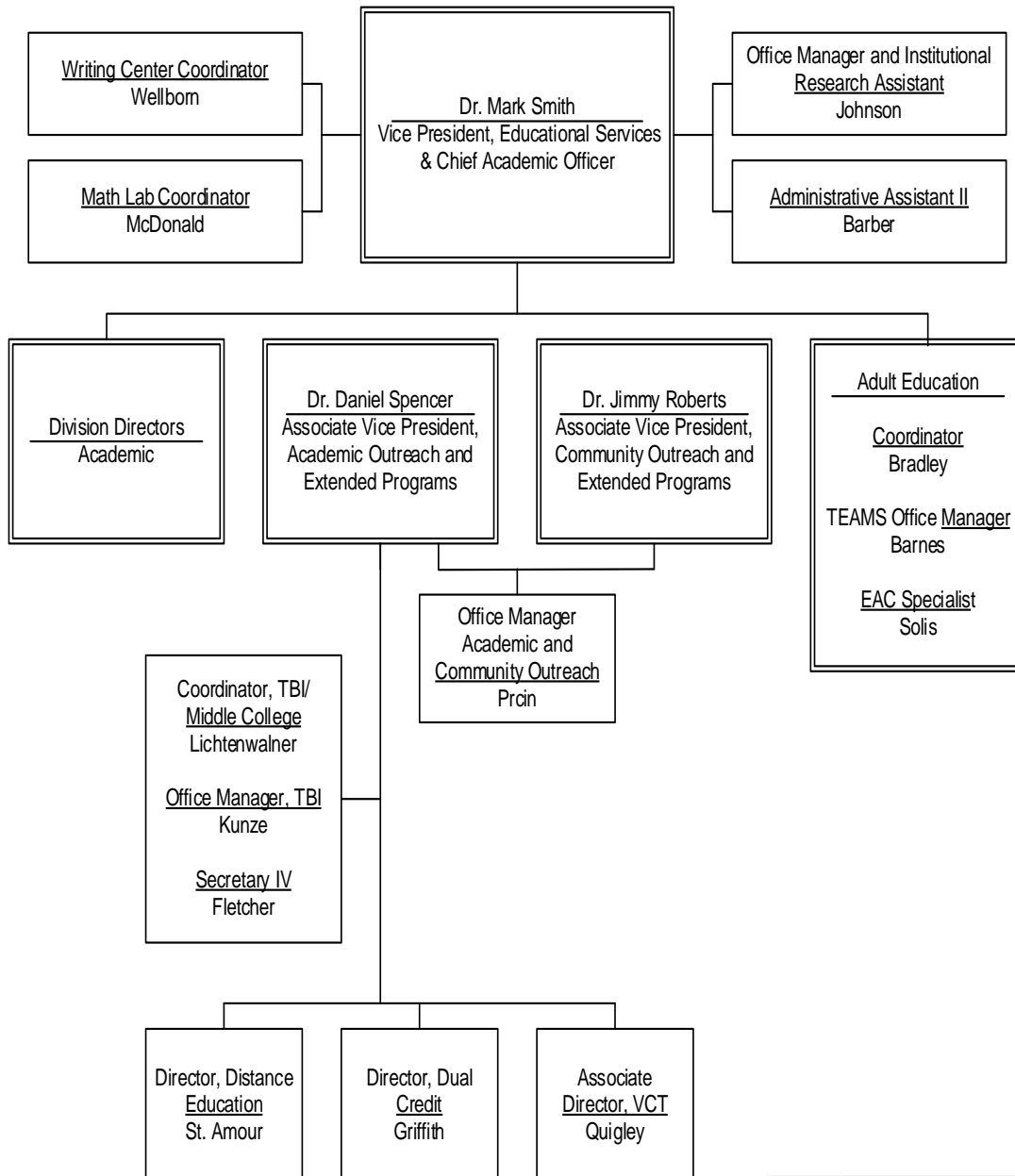
Division of Resource Management



Physical Plant

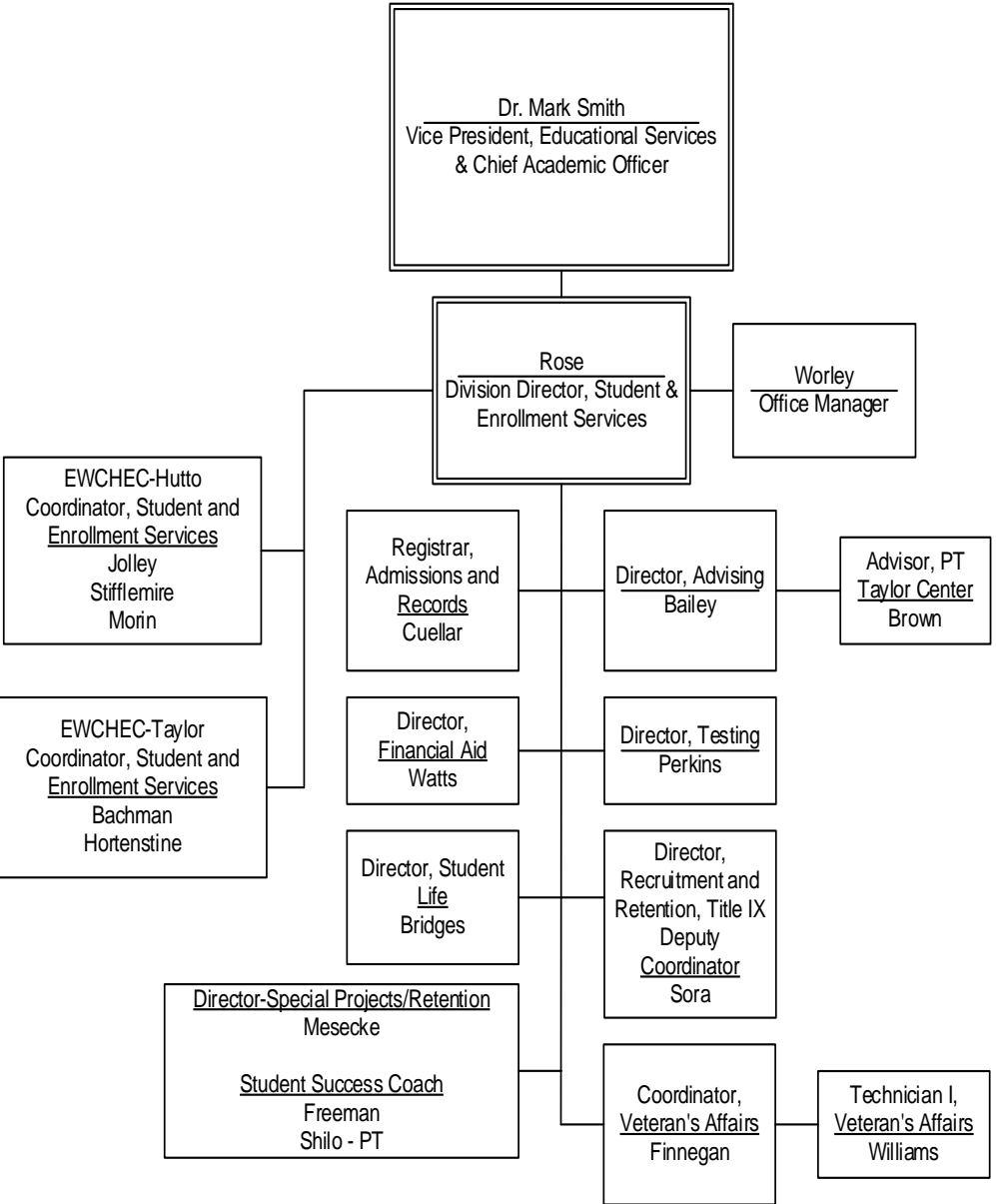


Educational Services



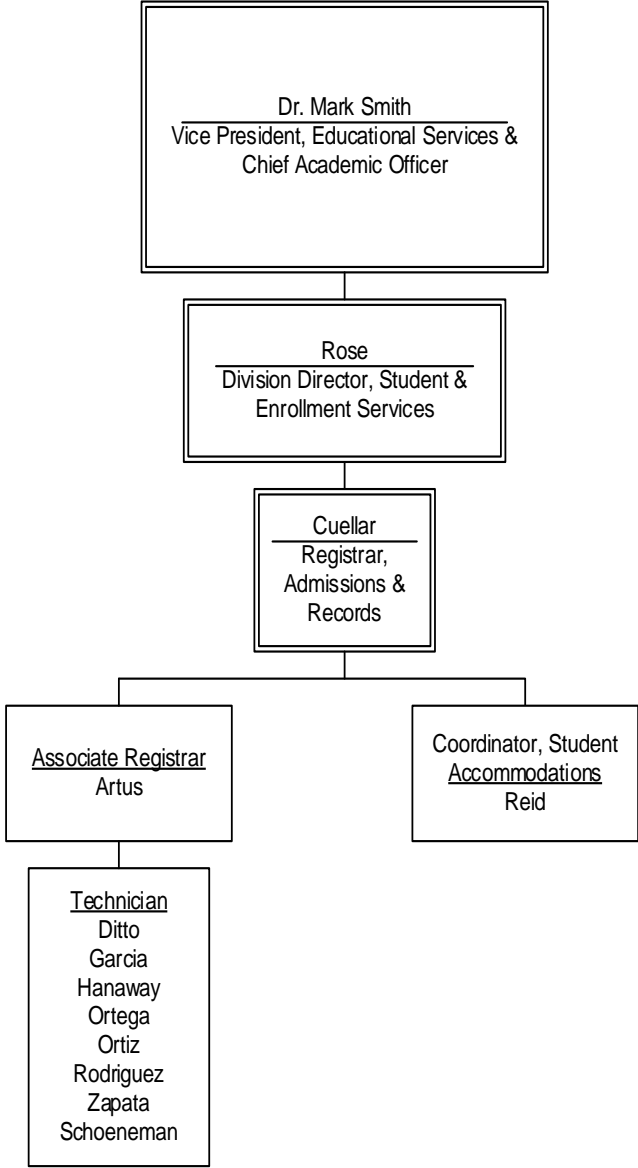
Organizational Chart I-7

Division of Student and Enrollment Services

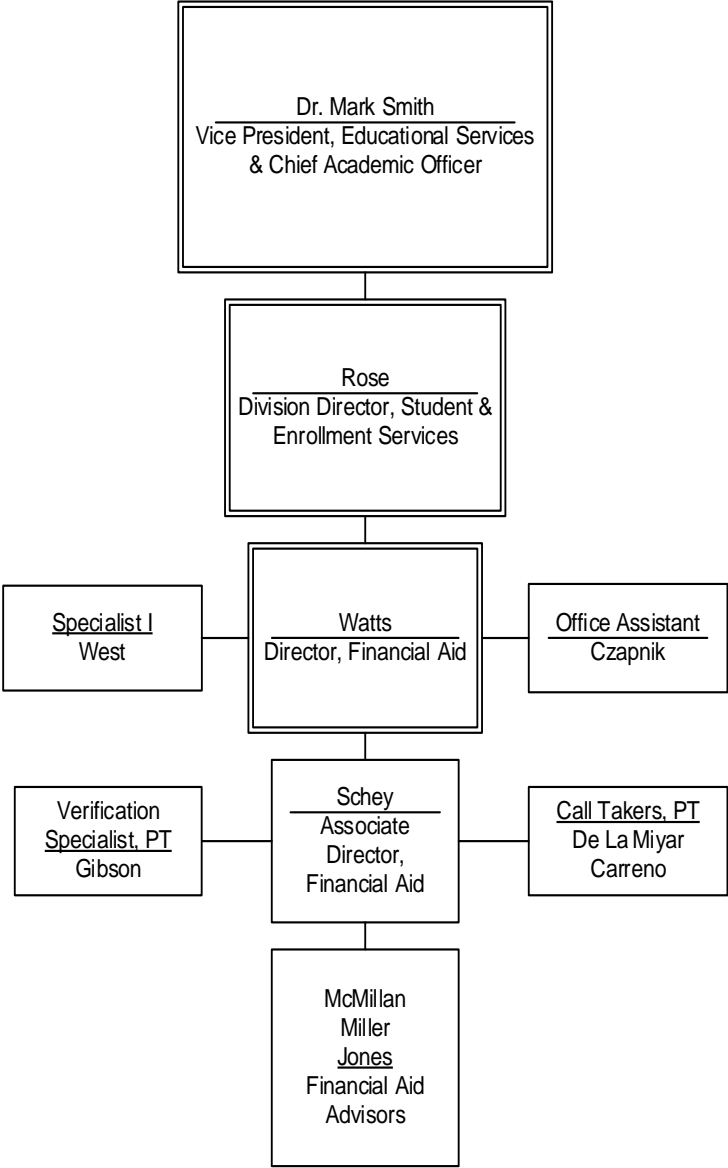


Organizational Chart I-8

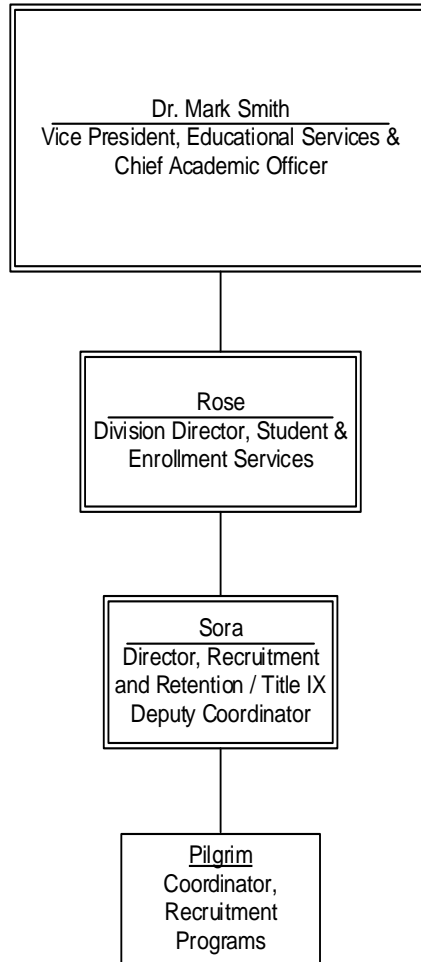
Admissions and Records



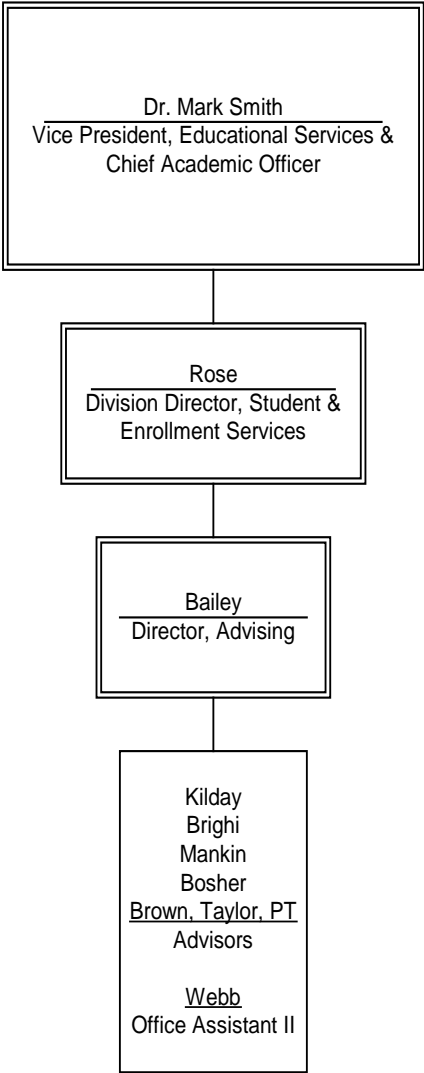
Financial Aid



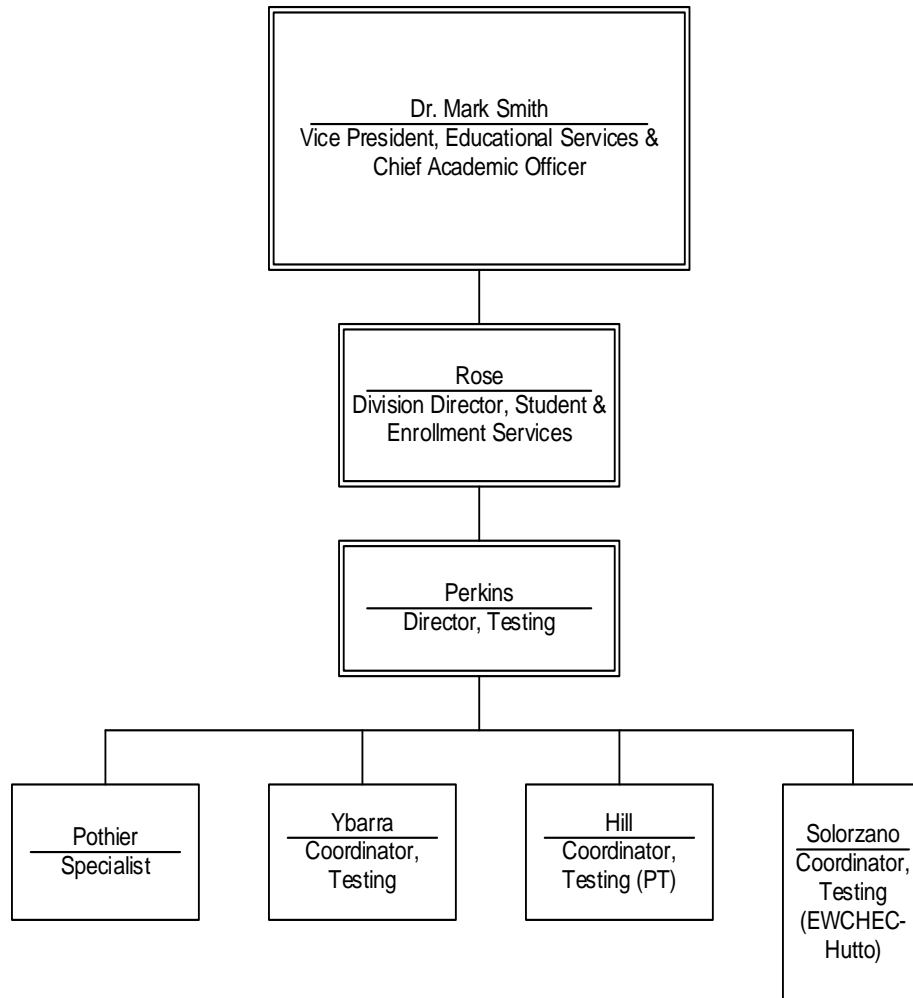
Recruitment and Retention



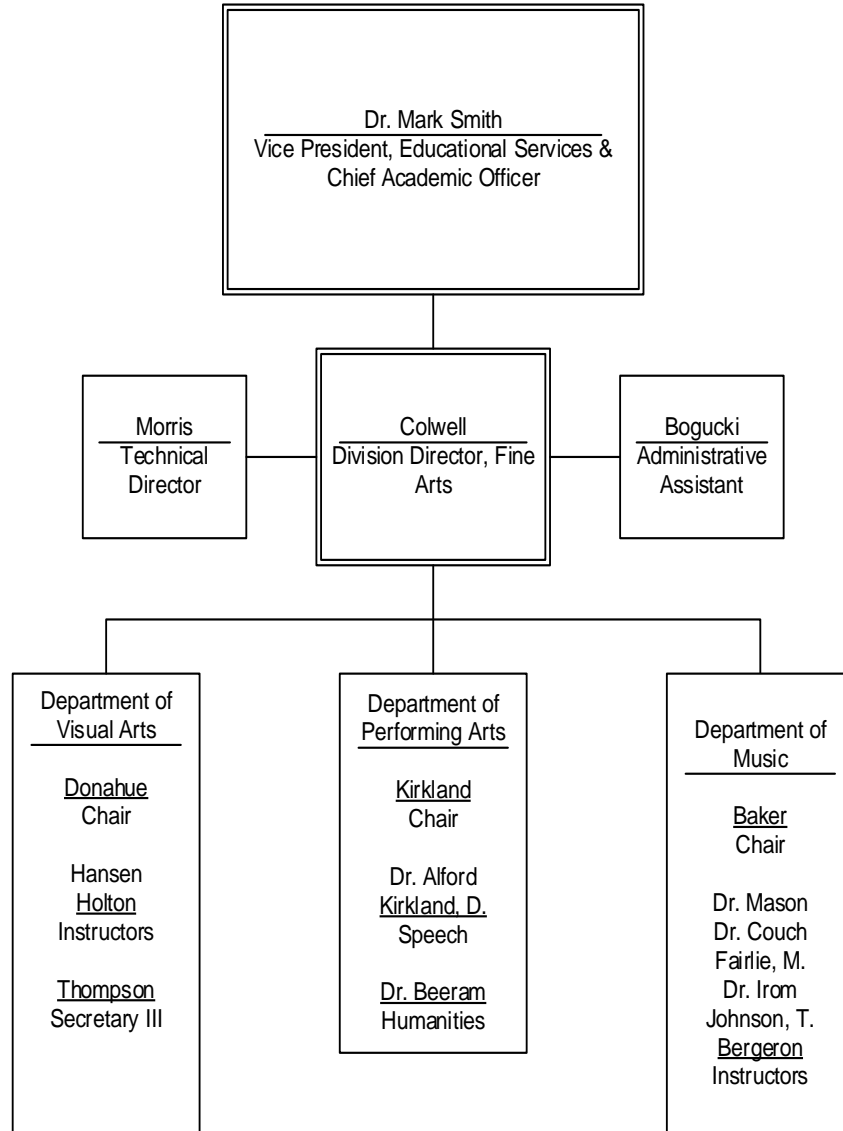
Advising



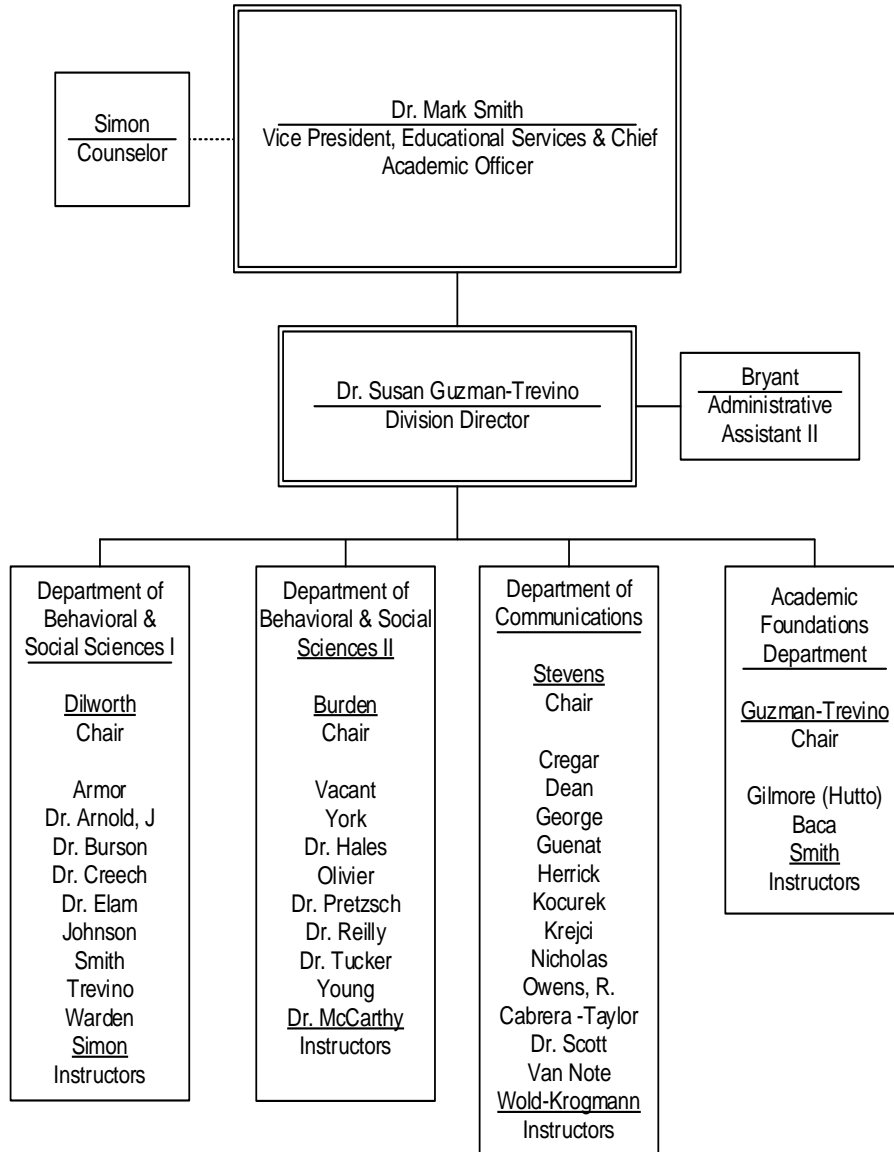
Testing



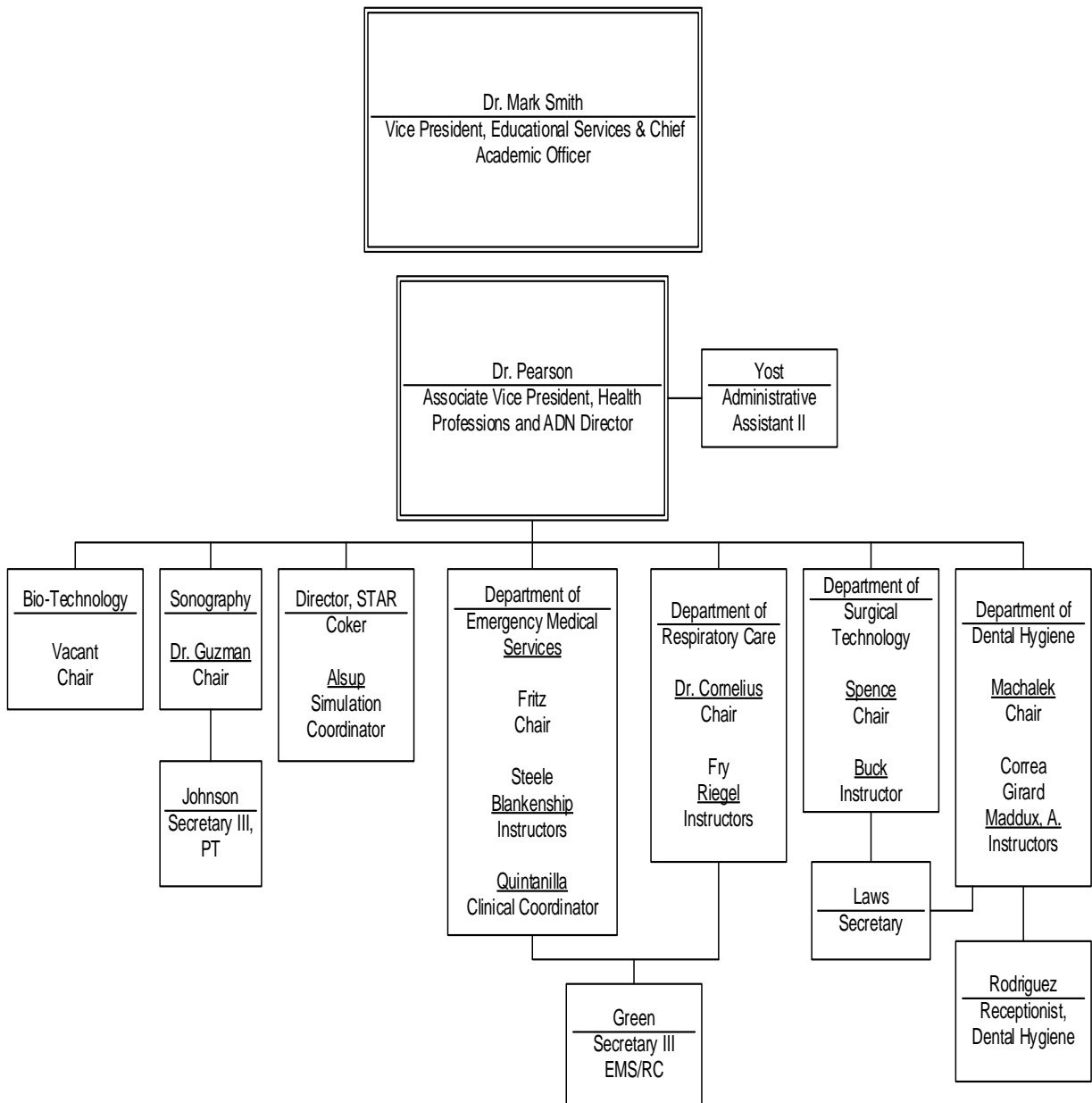
Division of Fine Arts



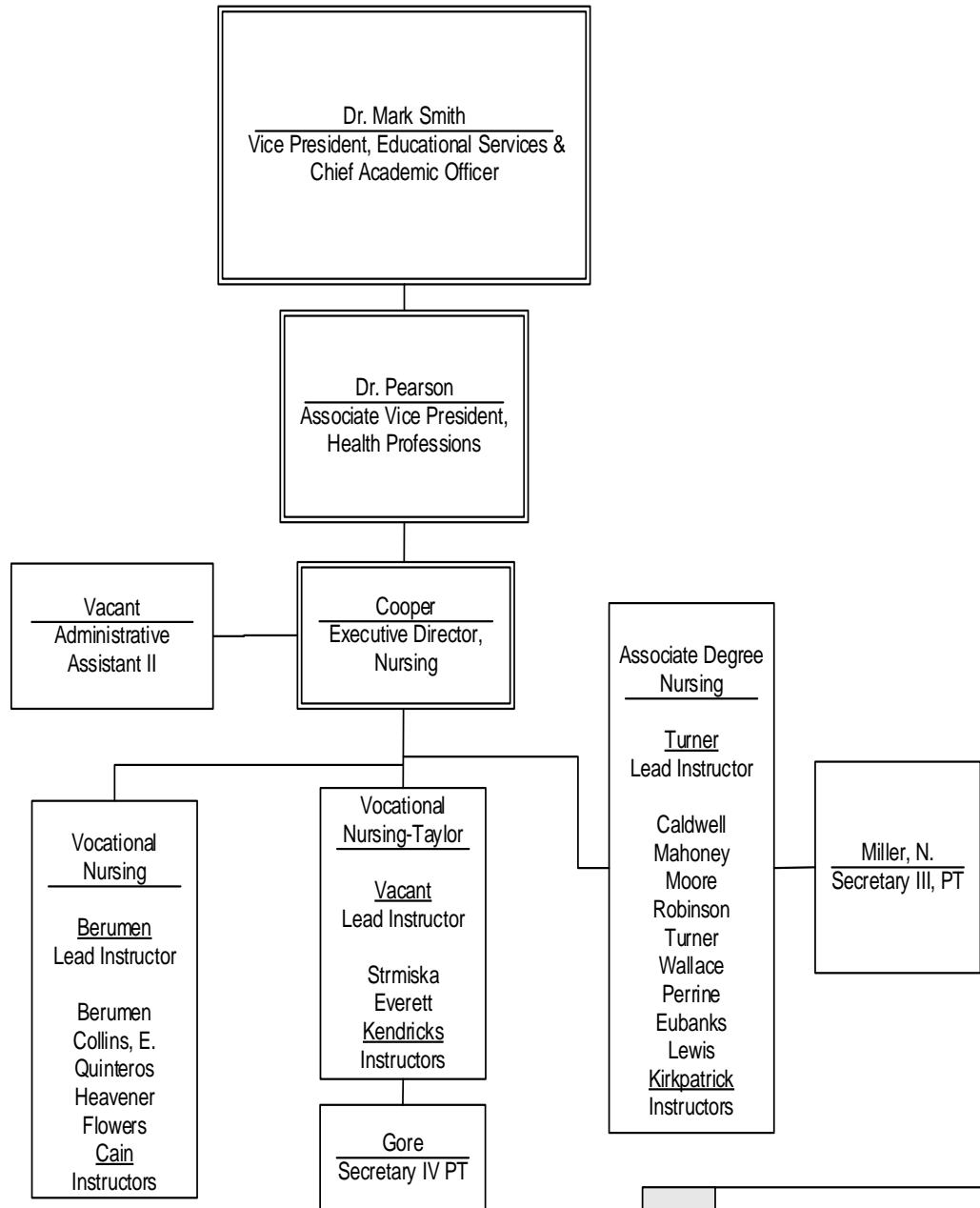
Division of Liberal Arts



Division of Health Professions

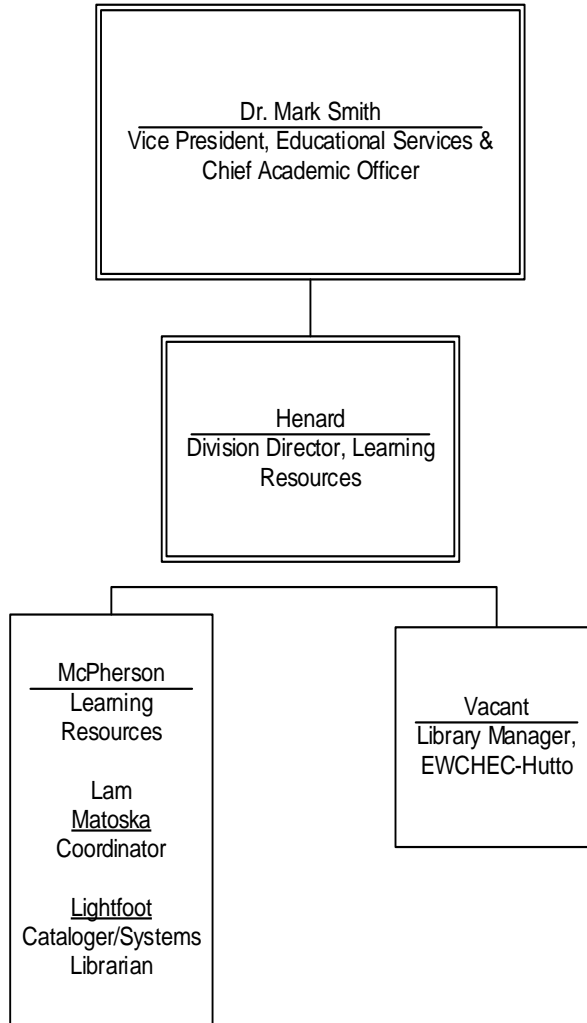


Division of Health Professions

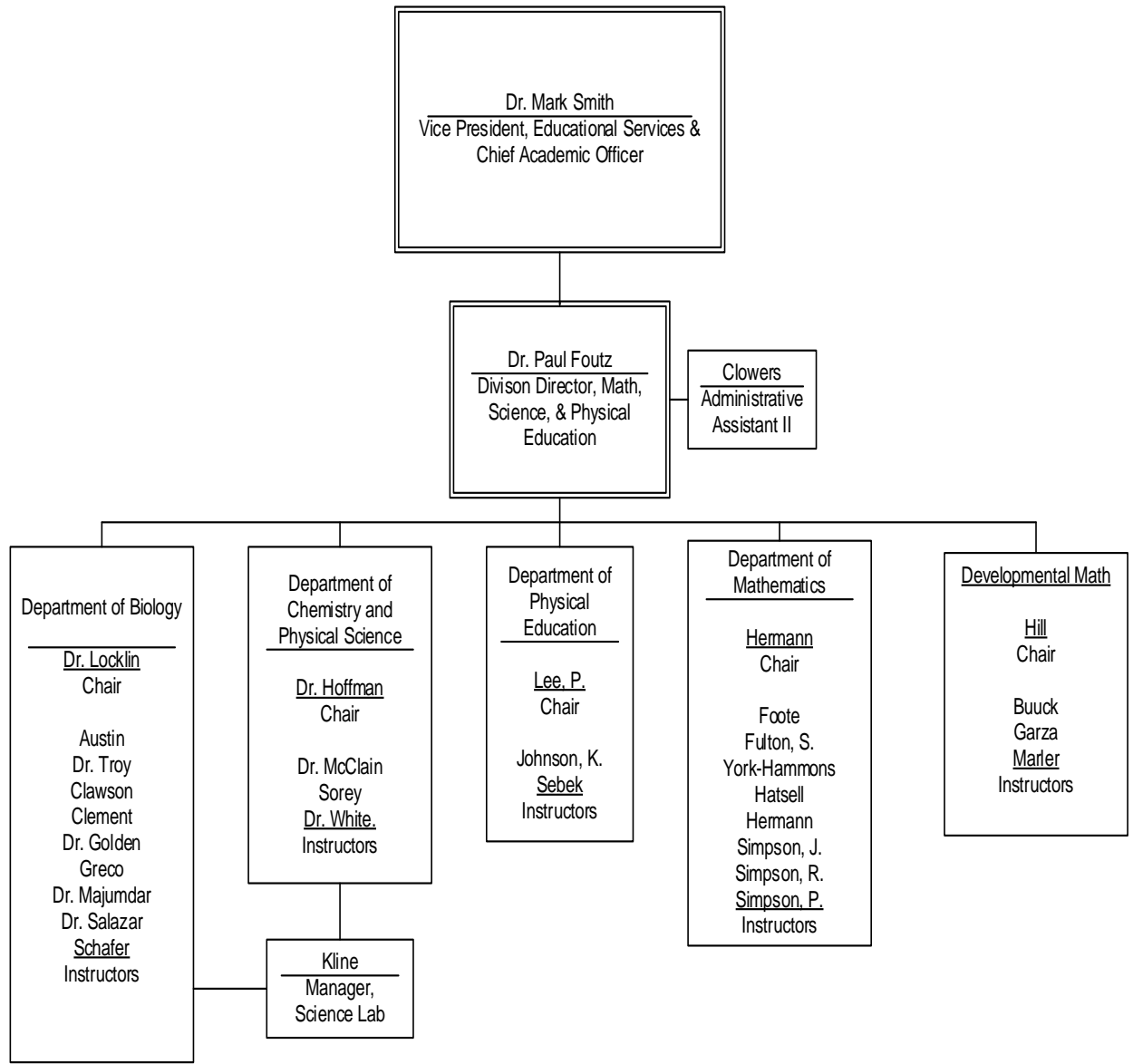


Organizational Chart I-17

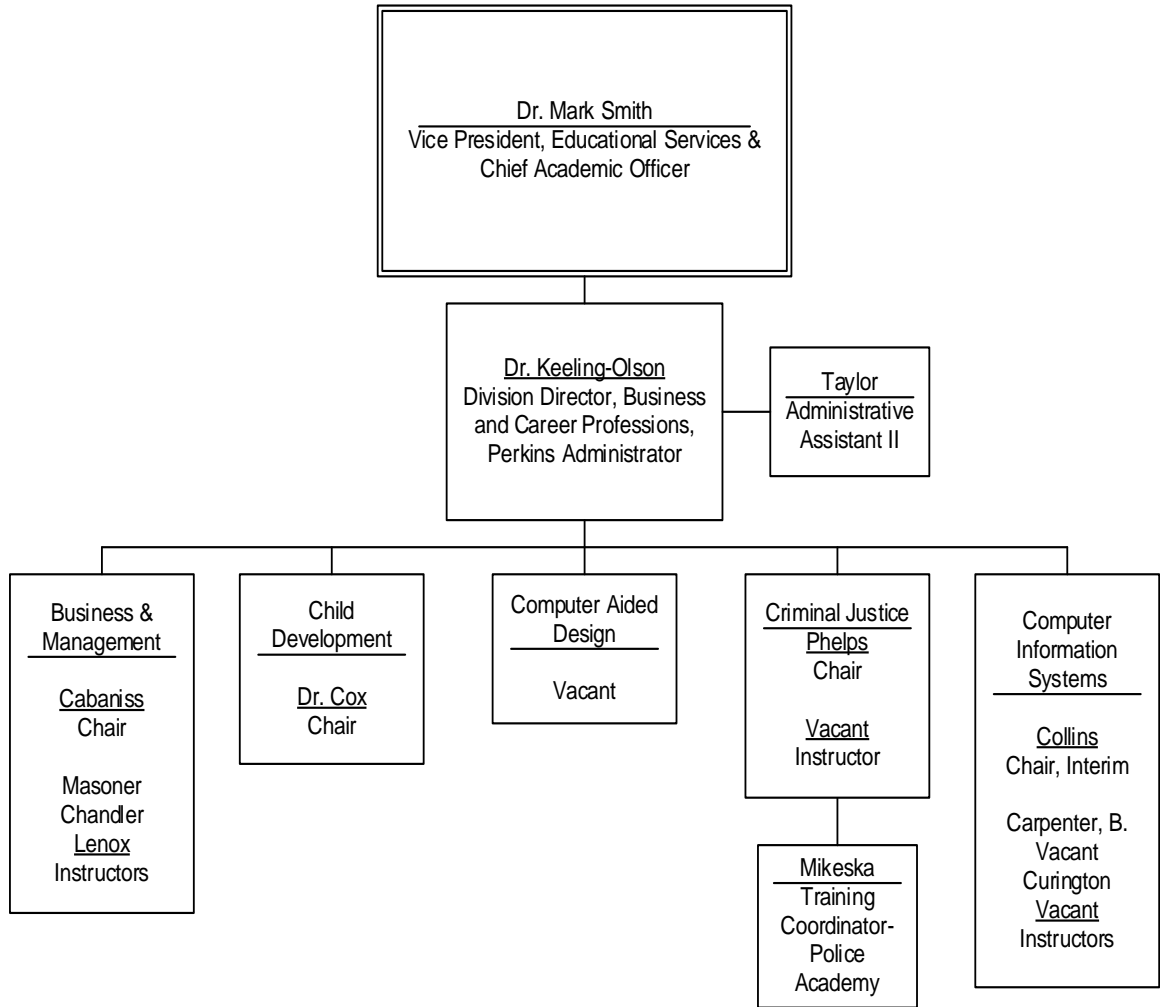
Division of Learning Resources



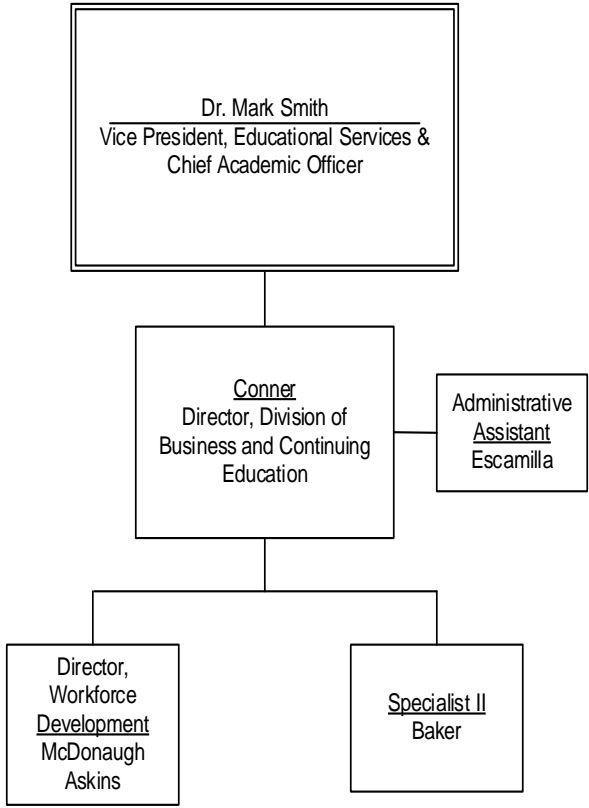
Division of Mathematics, Science, and Physical Education



Division of Business and Career Professions

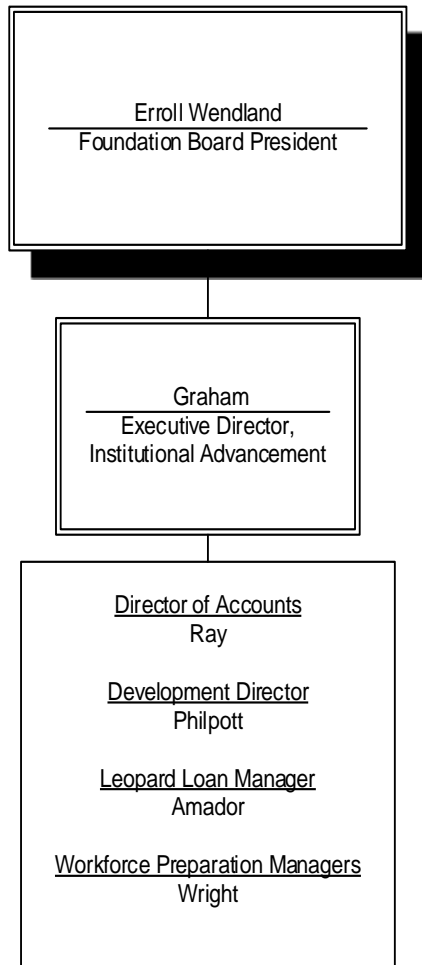


Division of Business and Continuing Education

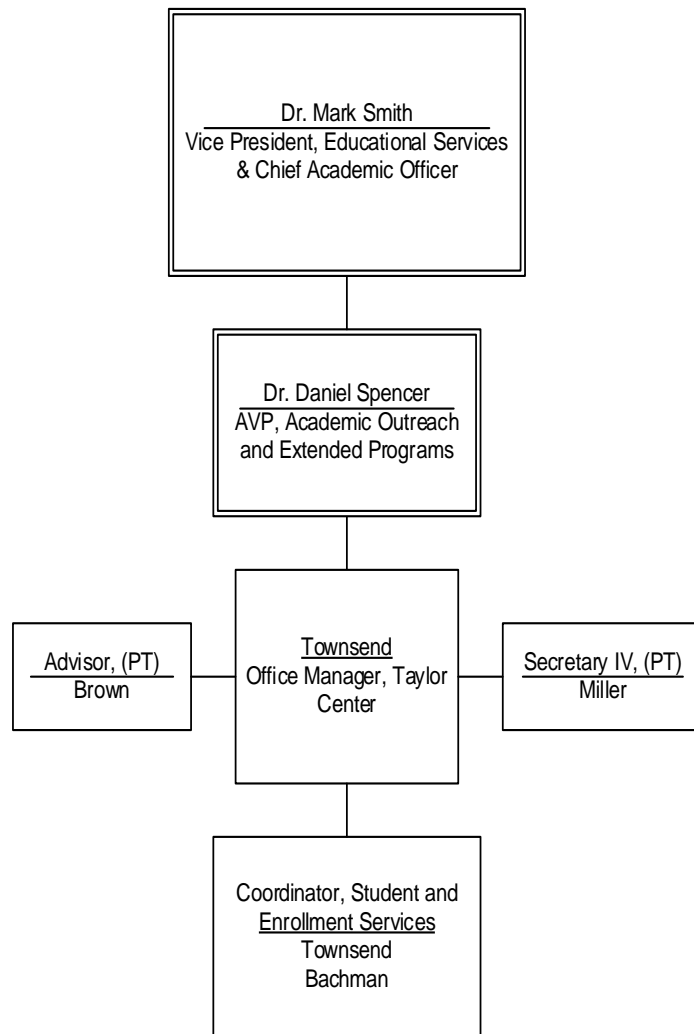




Temple College Foundation



EWCHEC Taylor



EWCHEC Hutto

