

Board of Trustees

Constituents of the Taxing District and Service Area

Board of Trustees

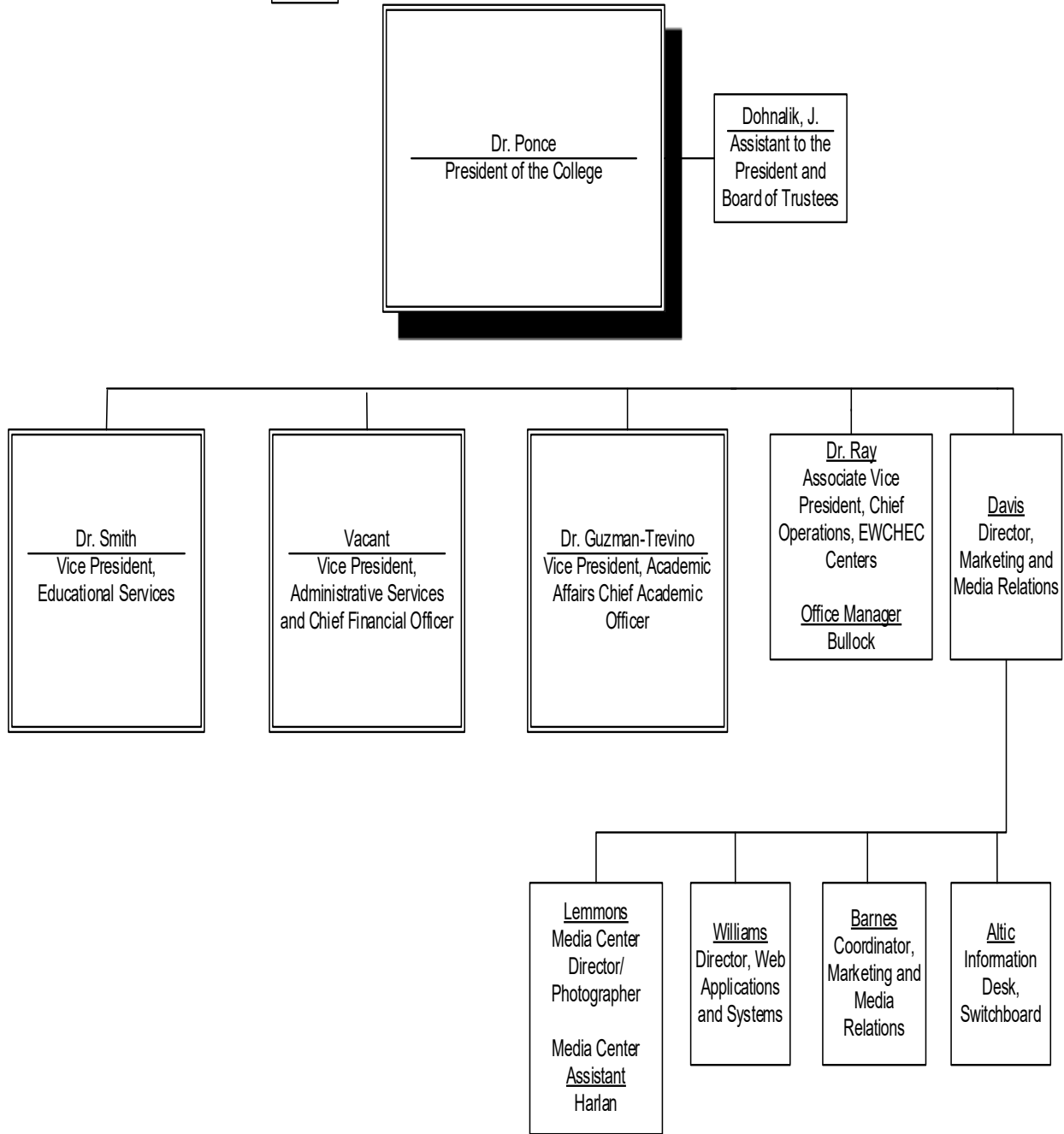
Katie Burrows
Chair of the Board of Trustees

Bob Browder
Vice-Chair

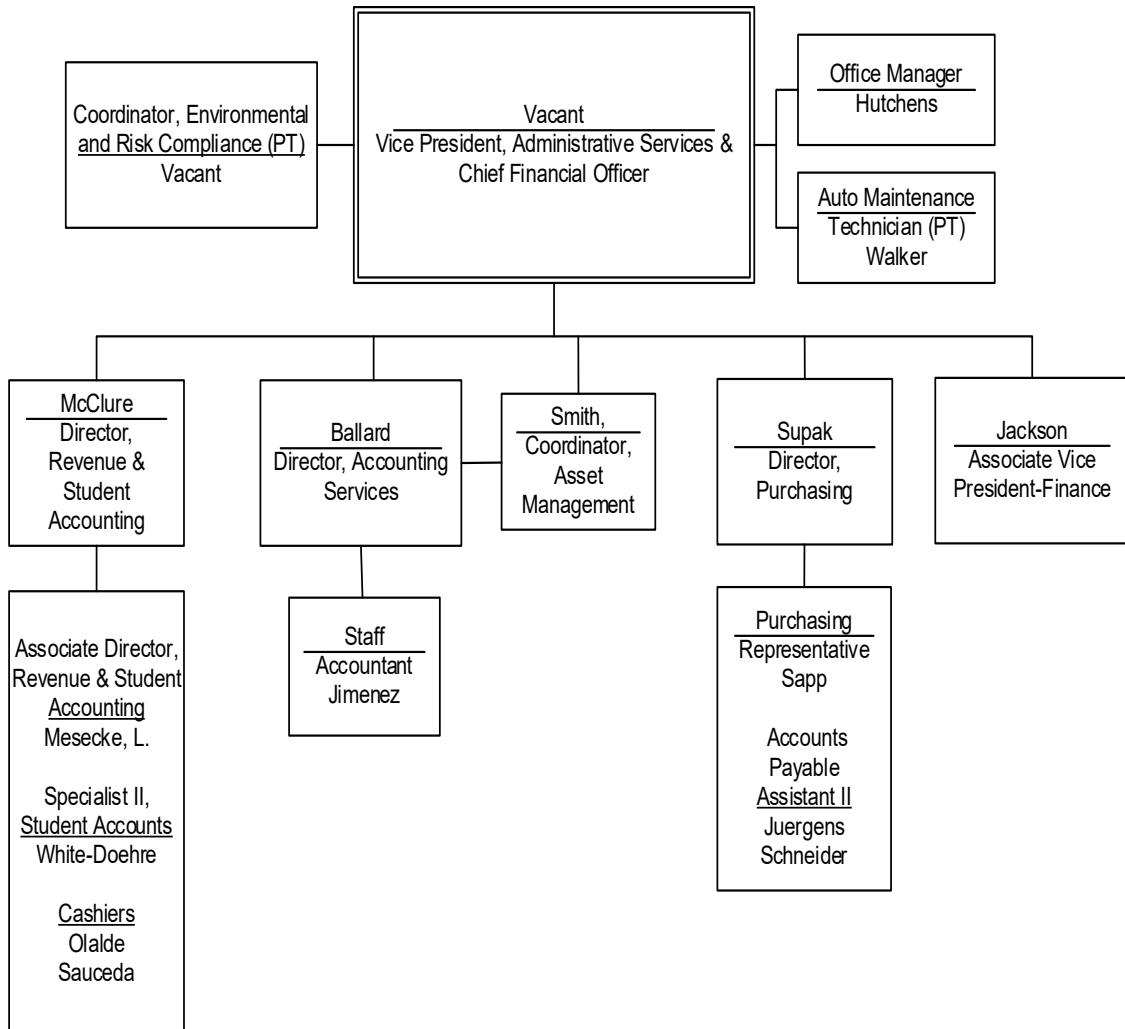
J. Harry Adams
Secretary

John Bailey
Dr. Alejandro C. Arroliga
Steve H.Niemeier
Lydia Santibanez
Larry J. Wilkerson
Dr. Andrejs Avots-Avotins
Members

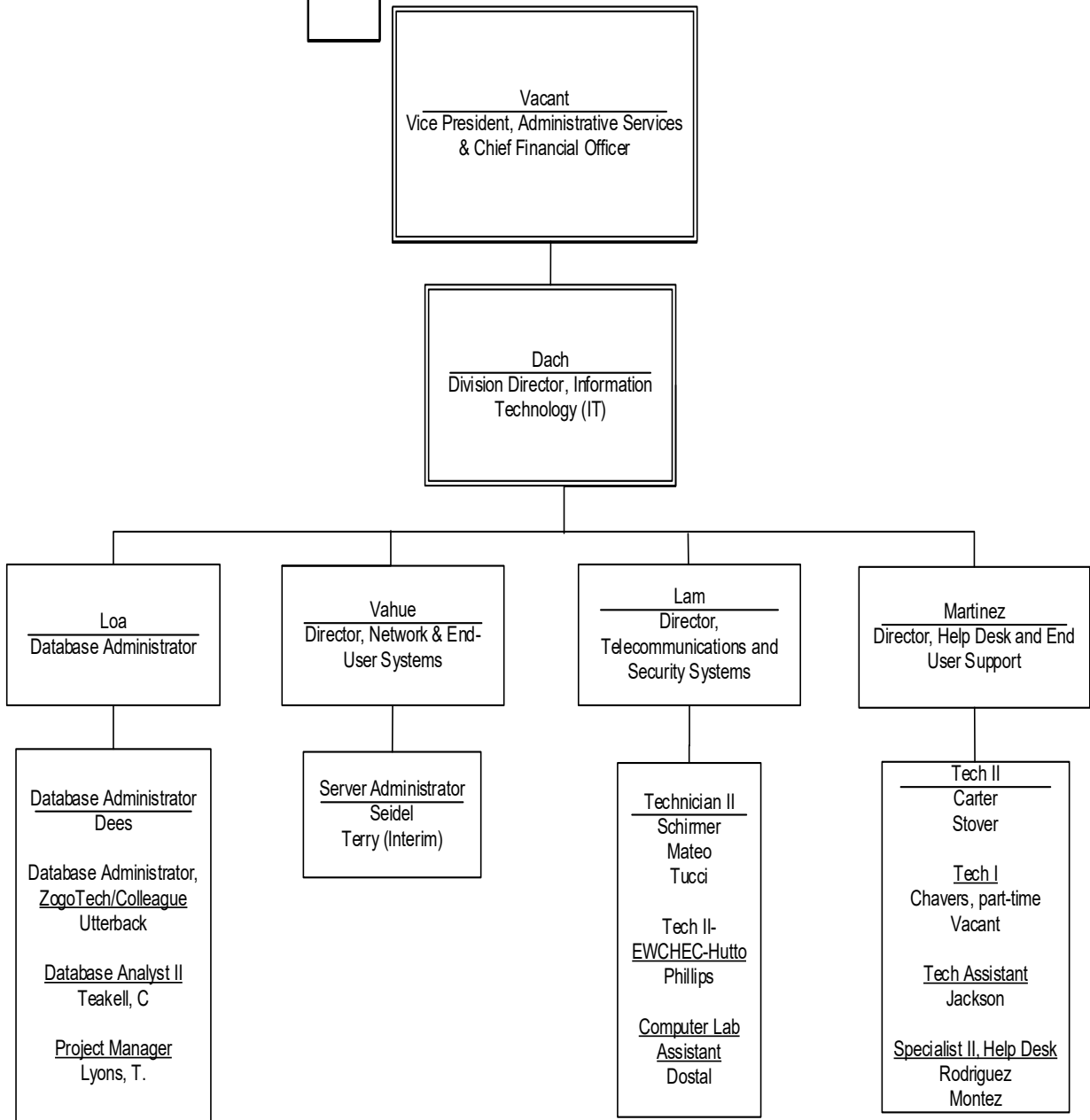
President's Office



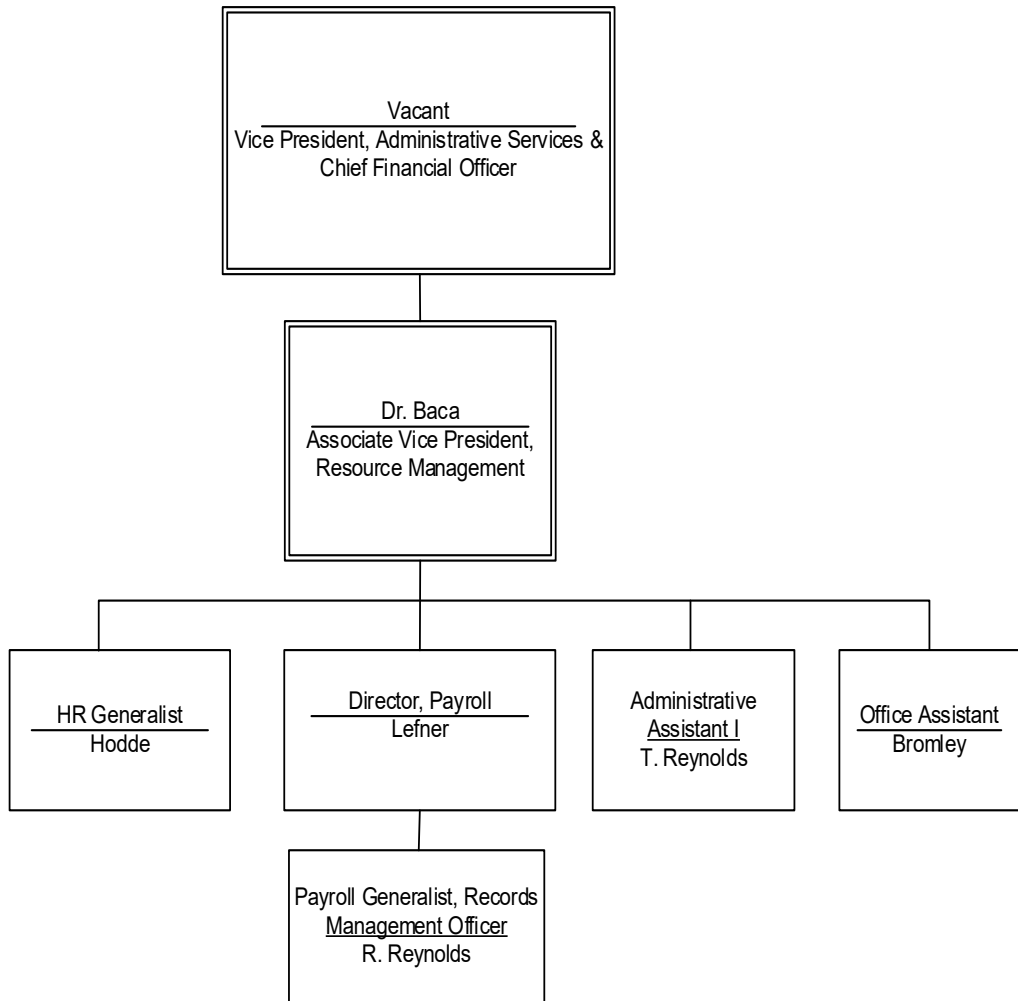
Administrative Services



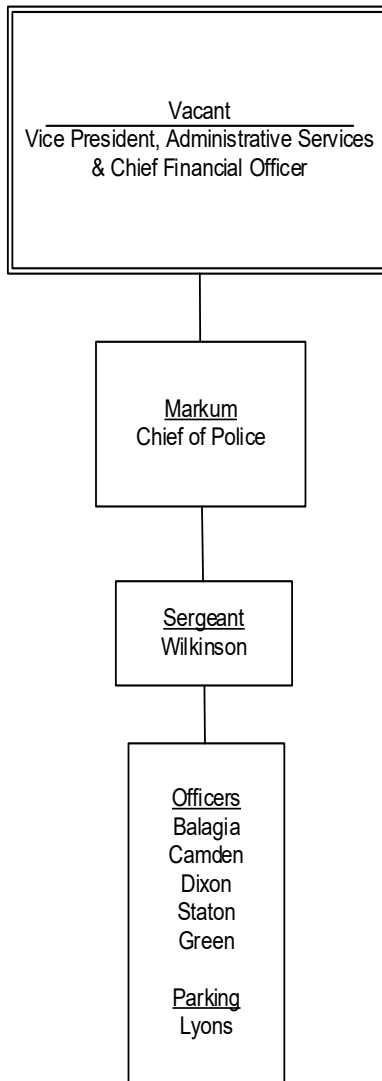
Division of Information Technology Services



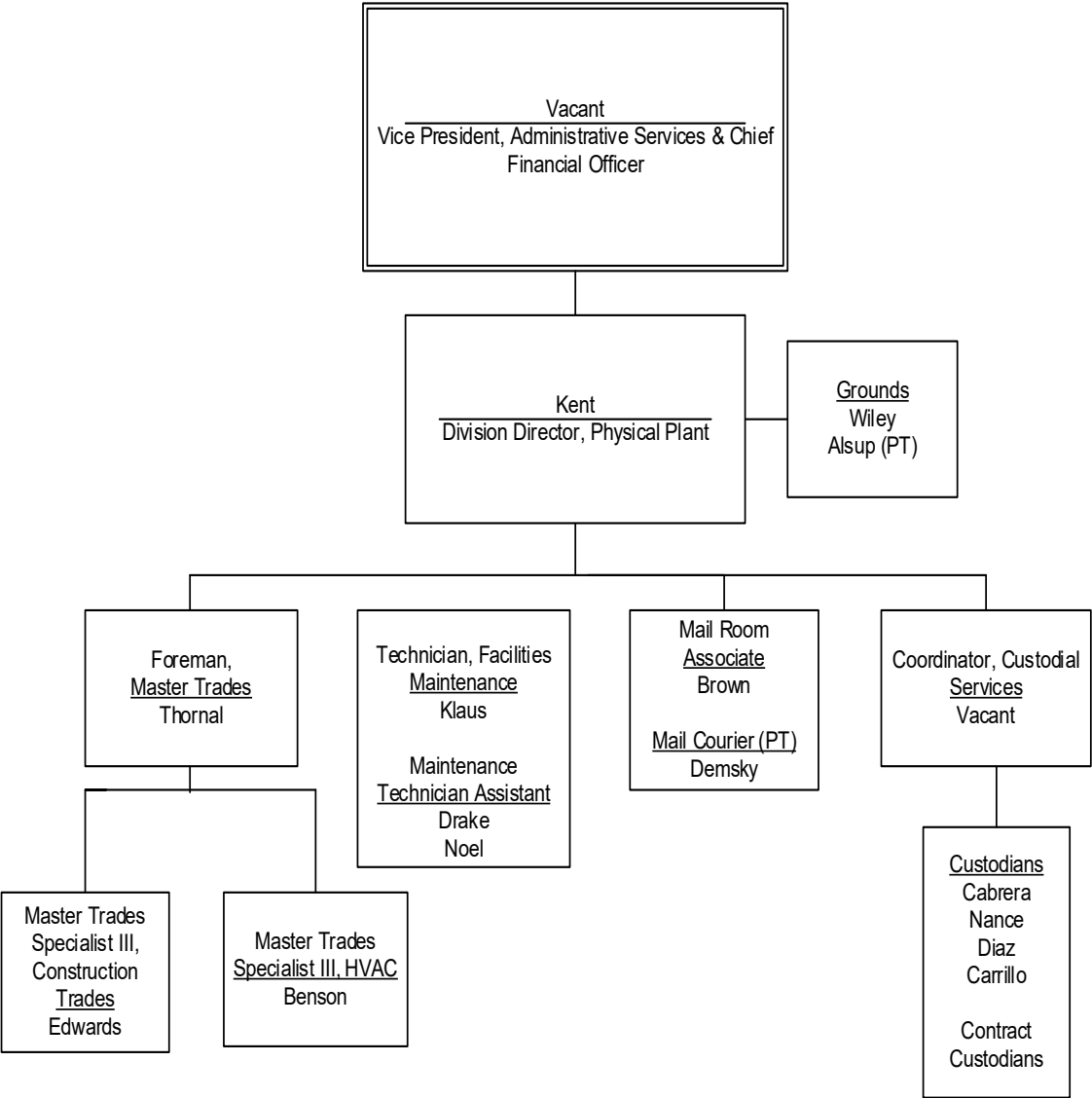
Division of Resource Management



Campus Police

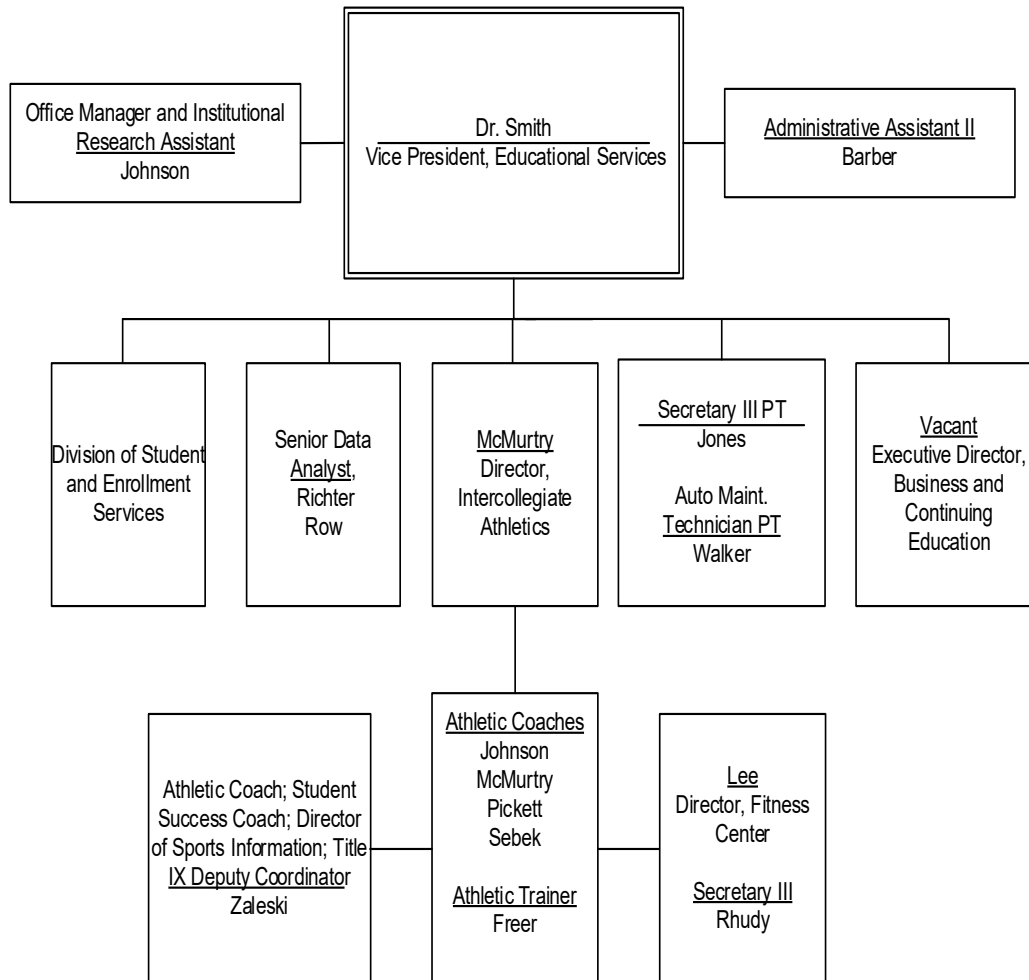


Physical Plant

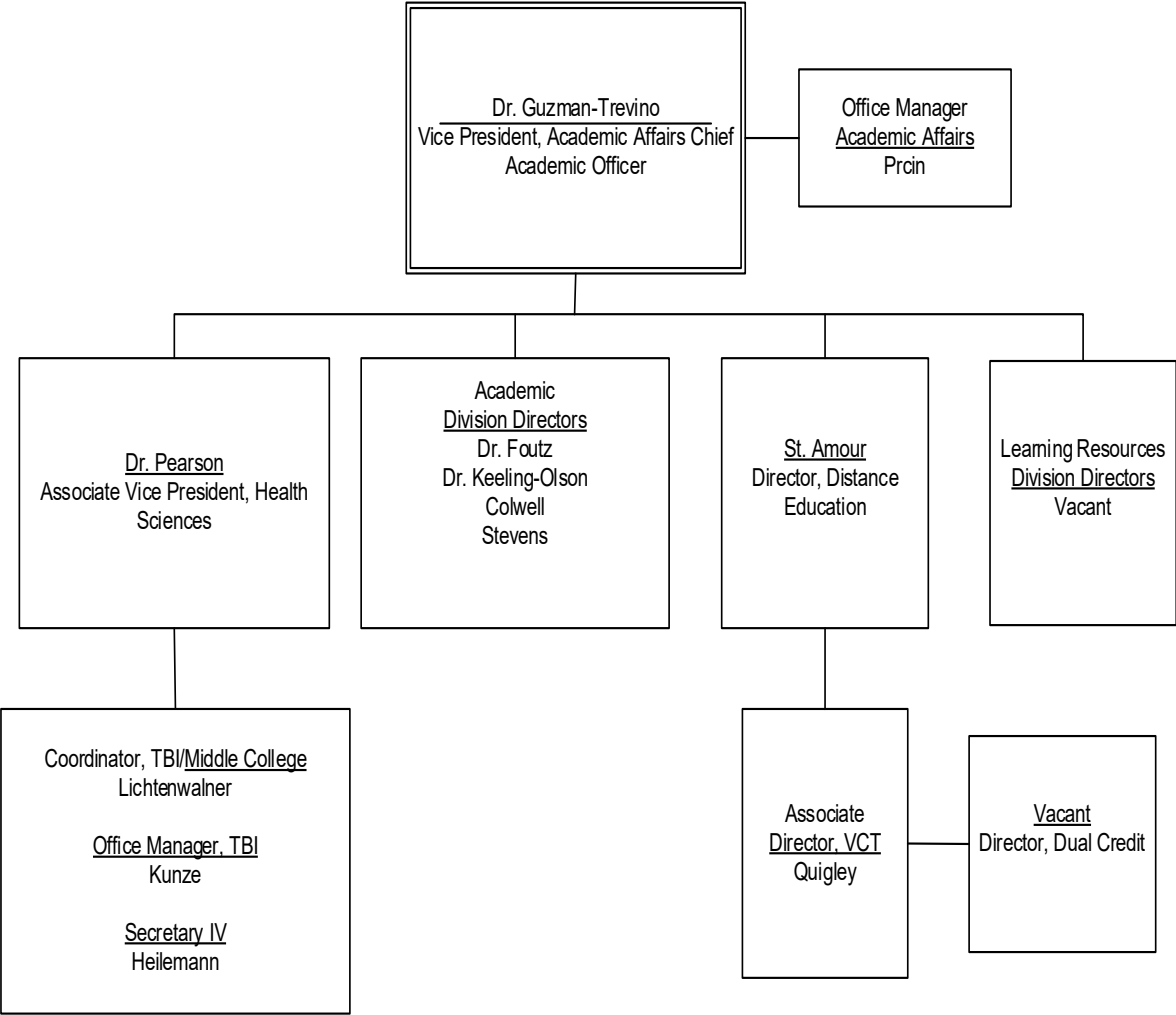


Organizational Chart I-7

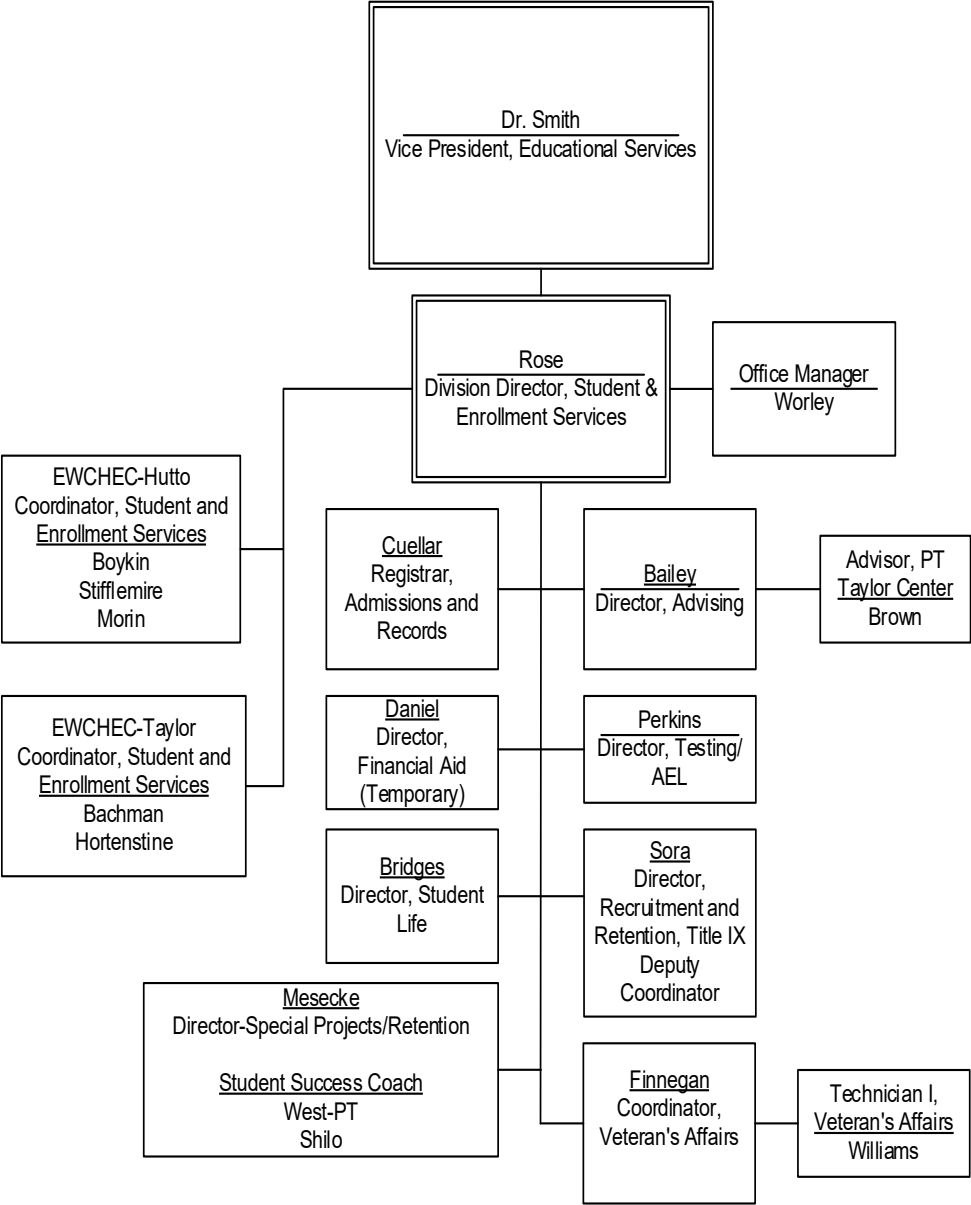
Educational Services



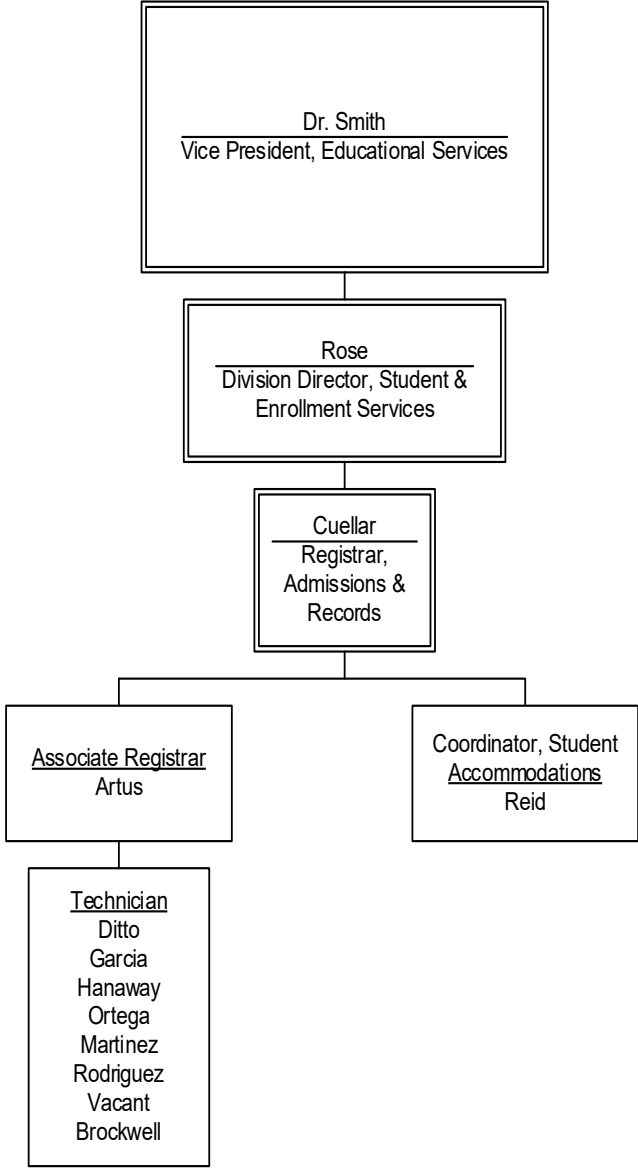
Academic Affairs



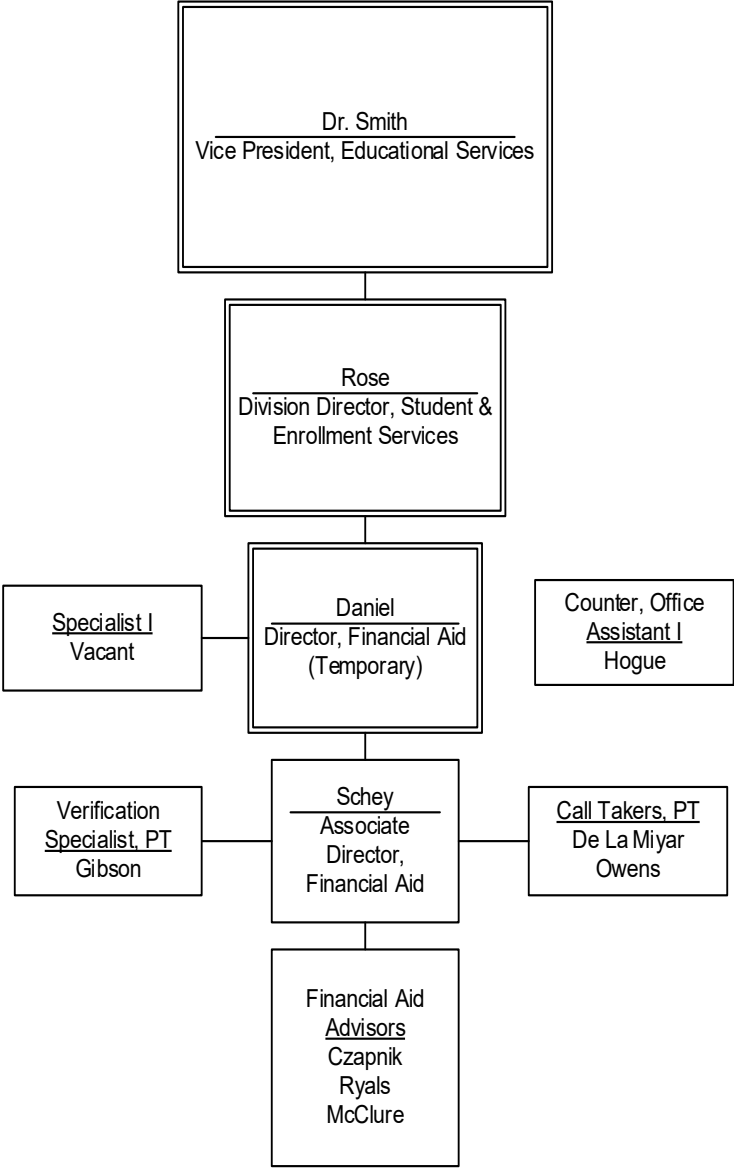
Division of Student and Enrollment Services



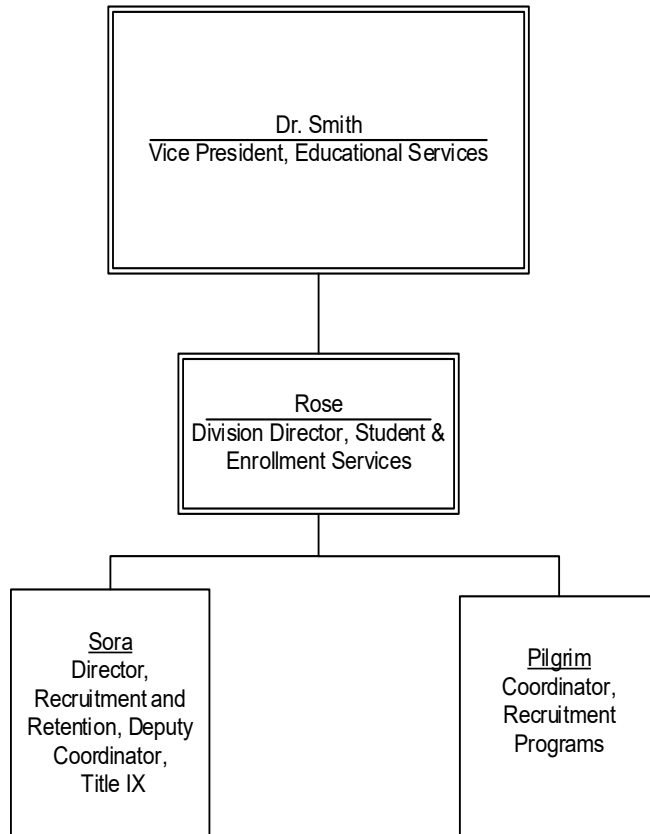
Admissions and Records



Financial Aid



Recruitment and Retention



Advising

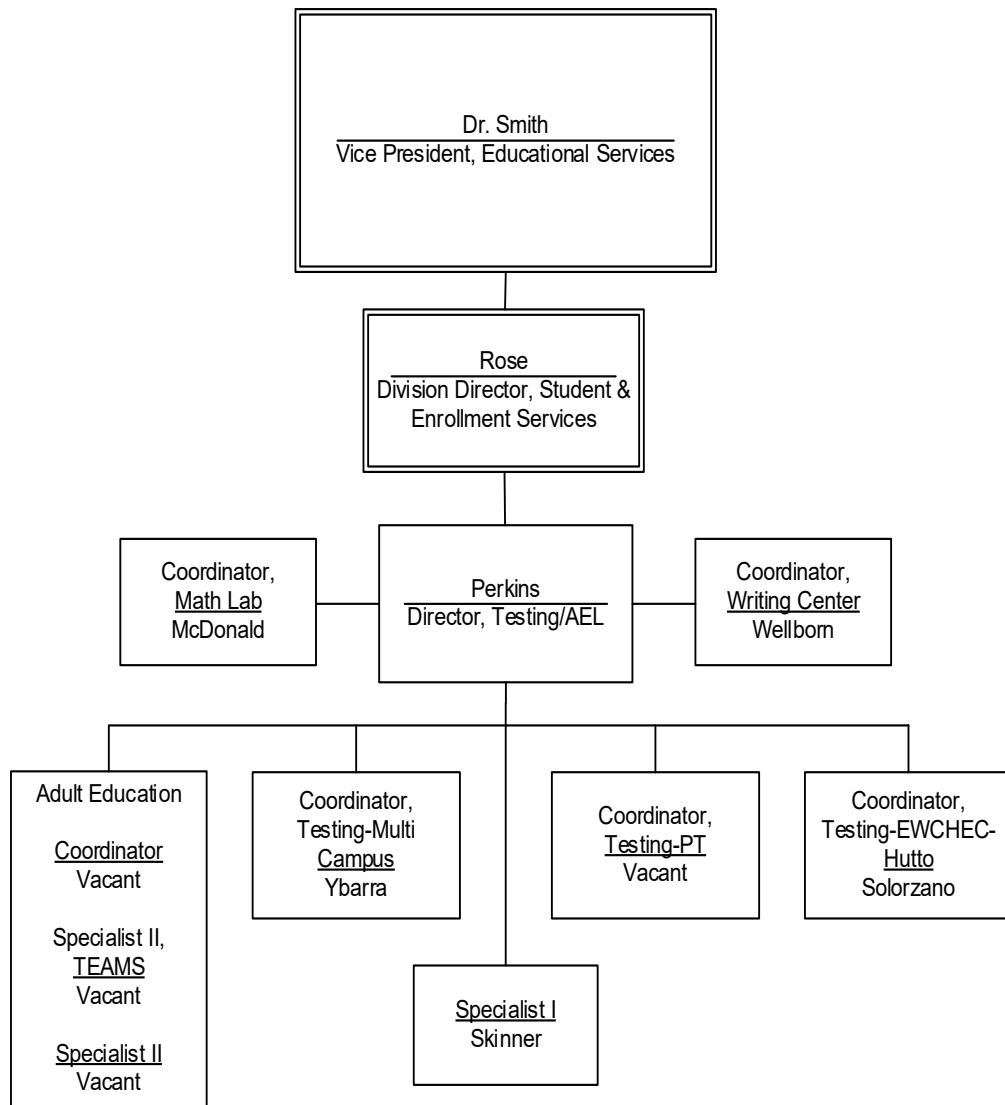
Dr. Smith
Vice President, Educational Services

Rose
Division Director, Student &
Enrollment Services

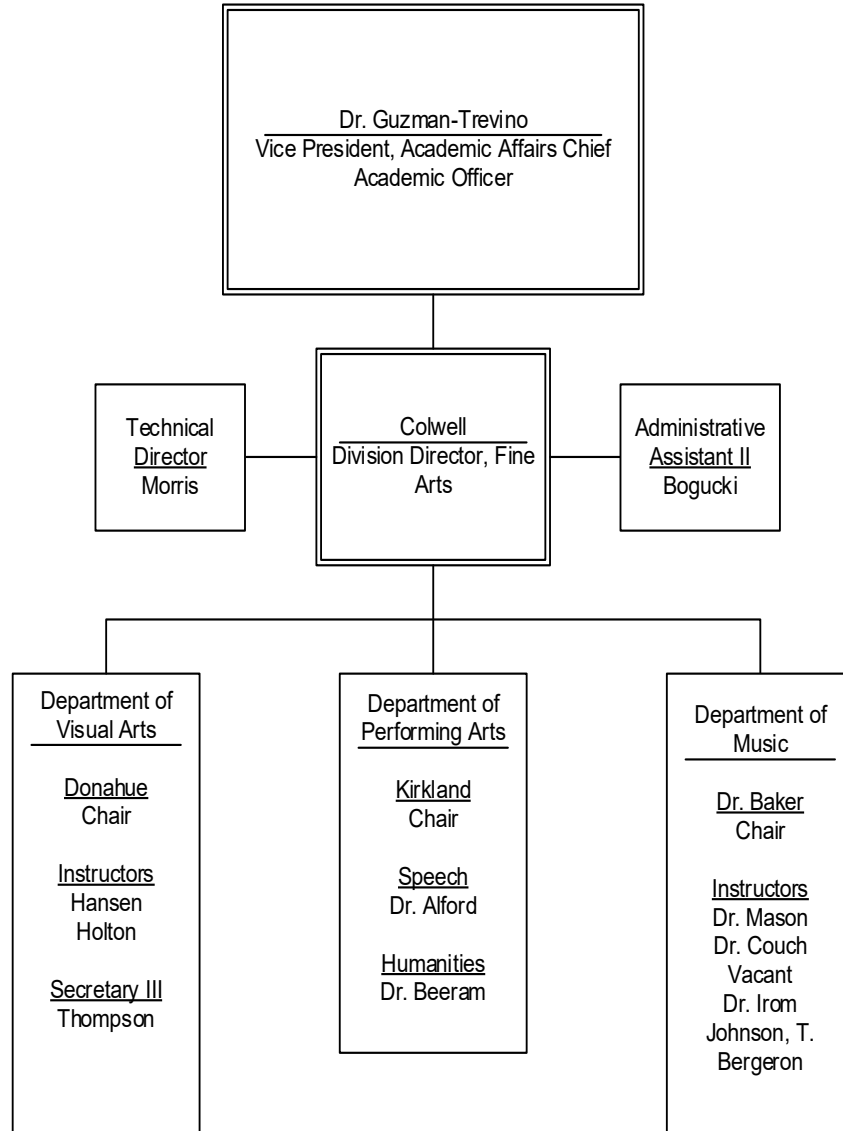
Bailey
Director, Advising

Advisors
Kilday
Brighi
Mankin
Bosher
Brown, Taylor, PT
Office Assistant II
Webb

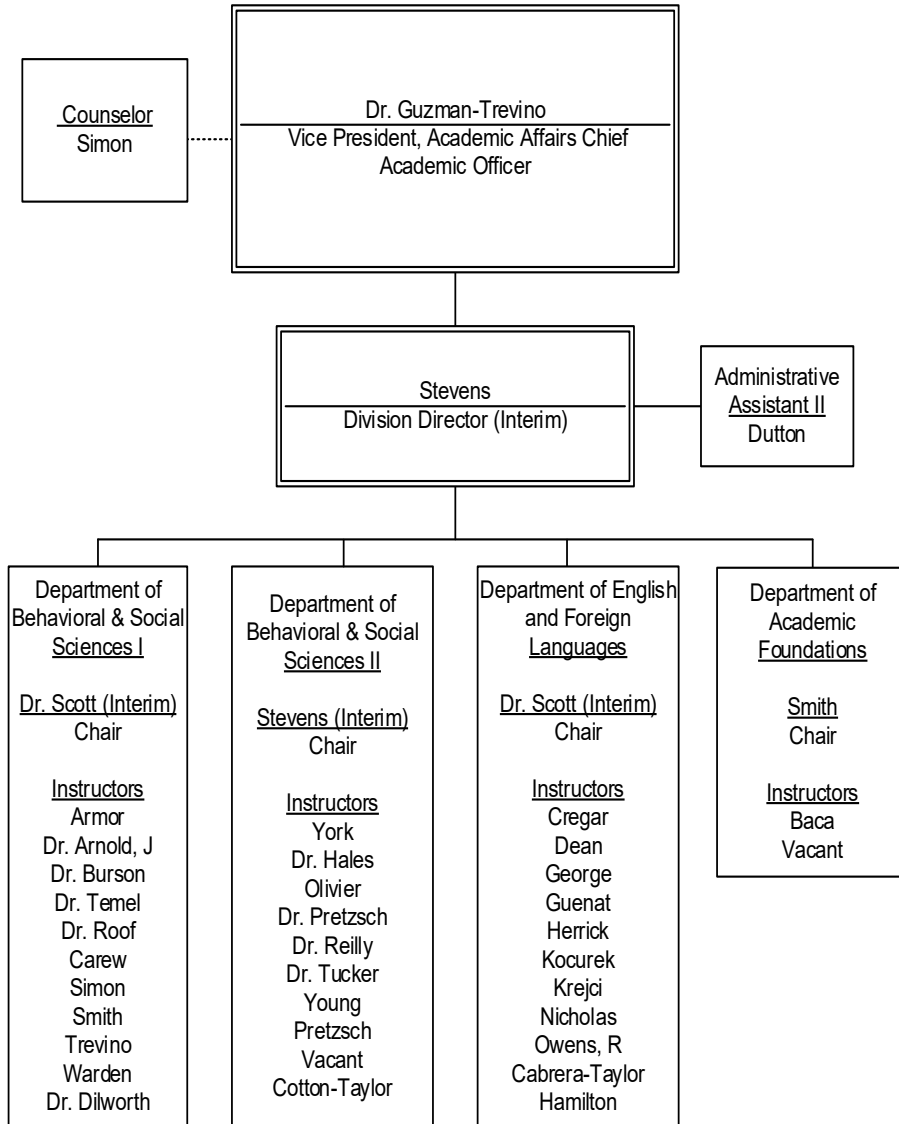
Testing



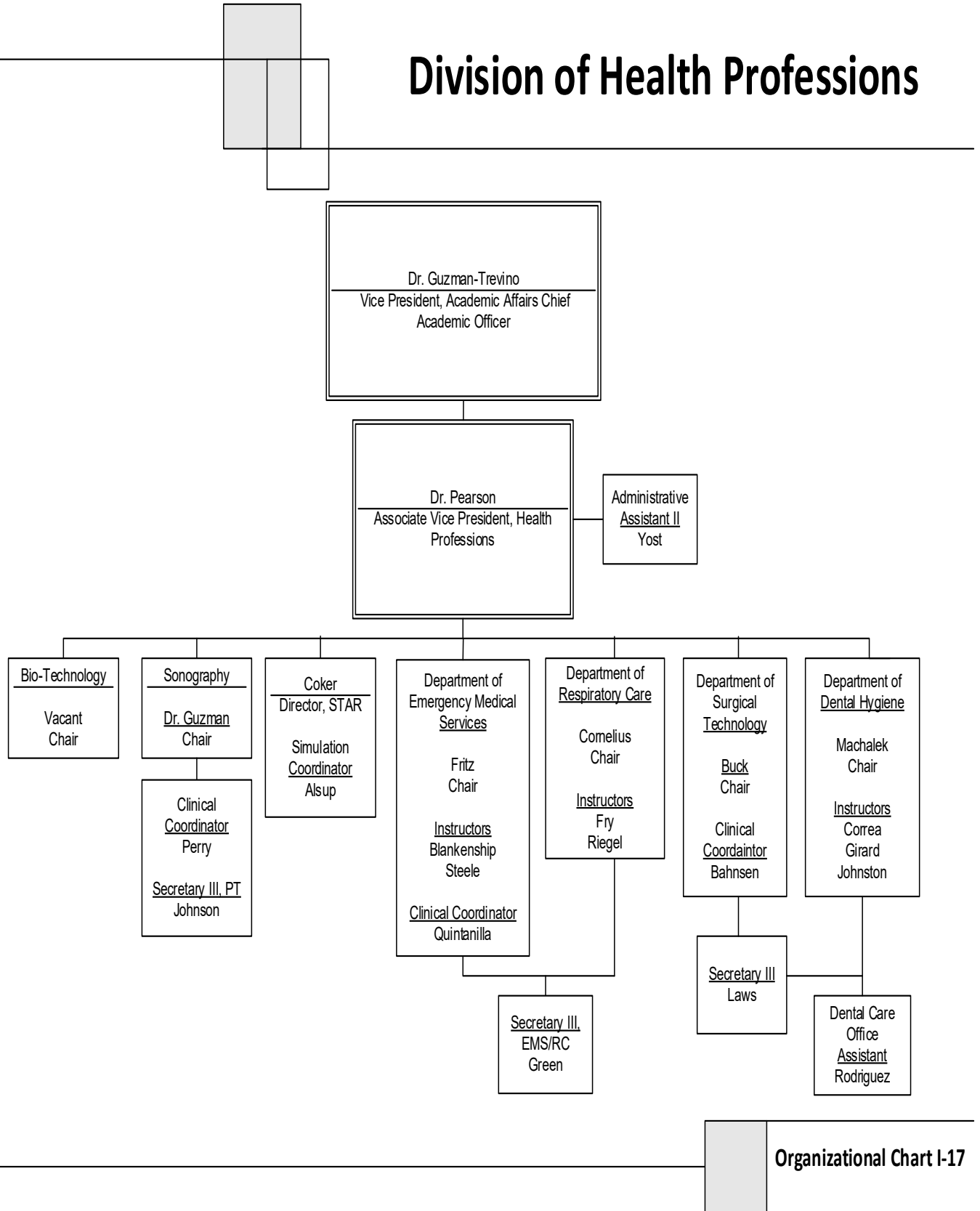
Division of Fine Arts



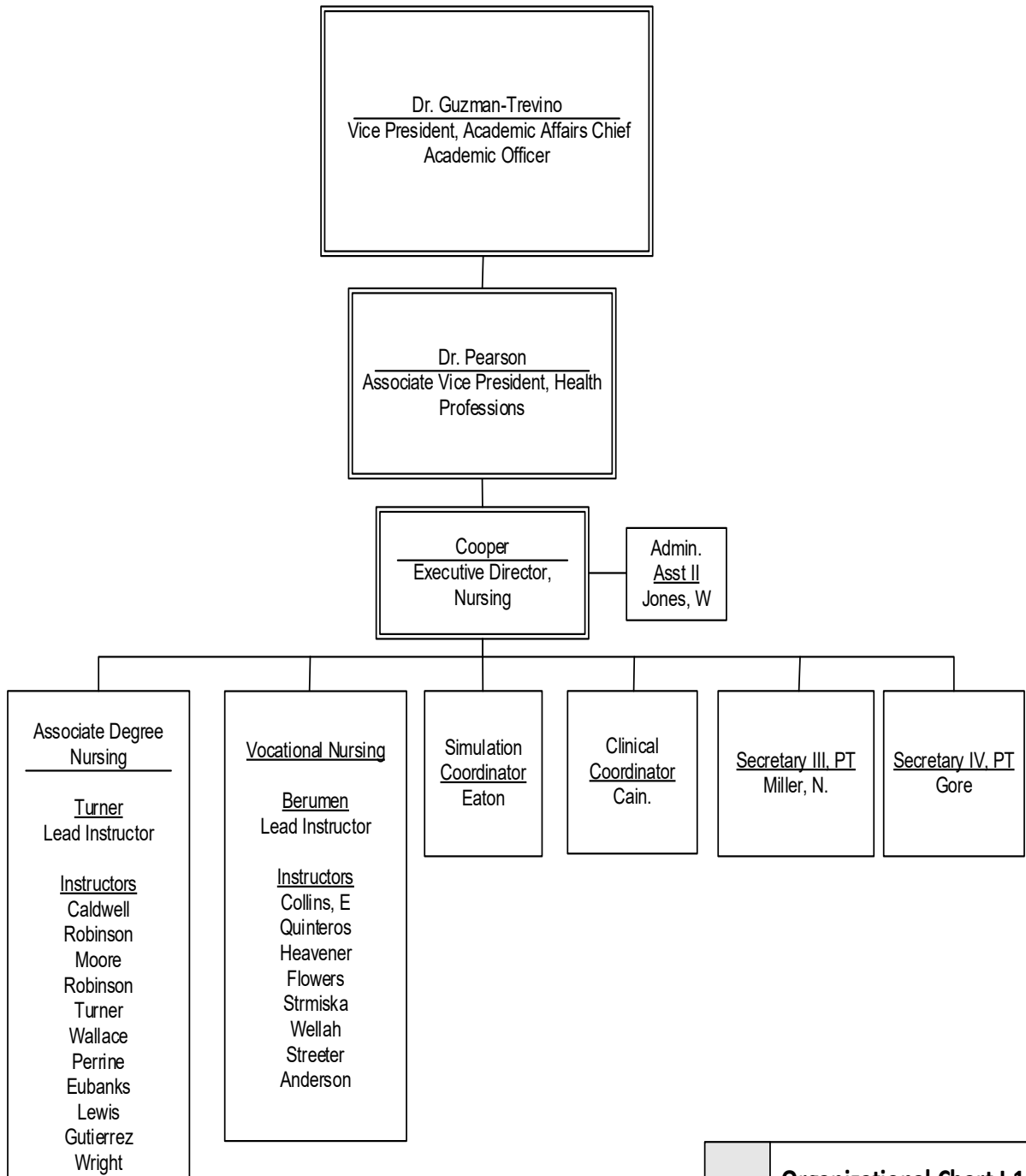
Division of Liberal Arts



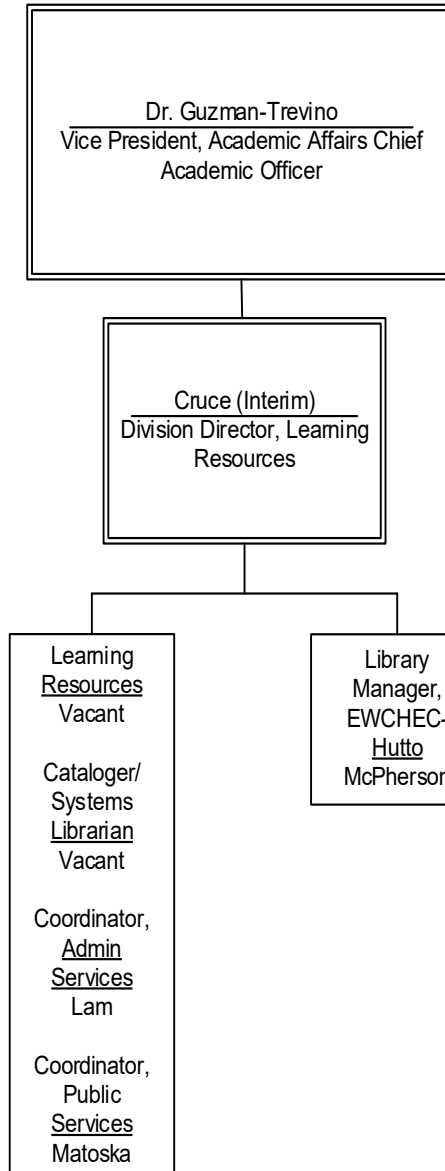
Division of Health Professions



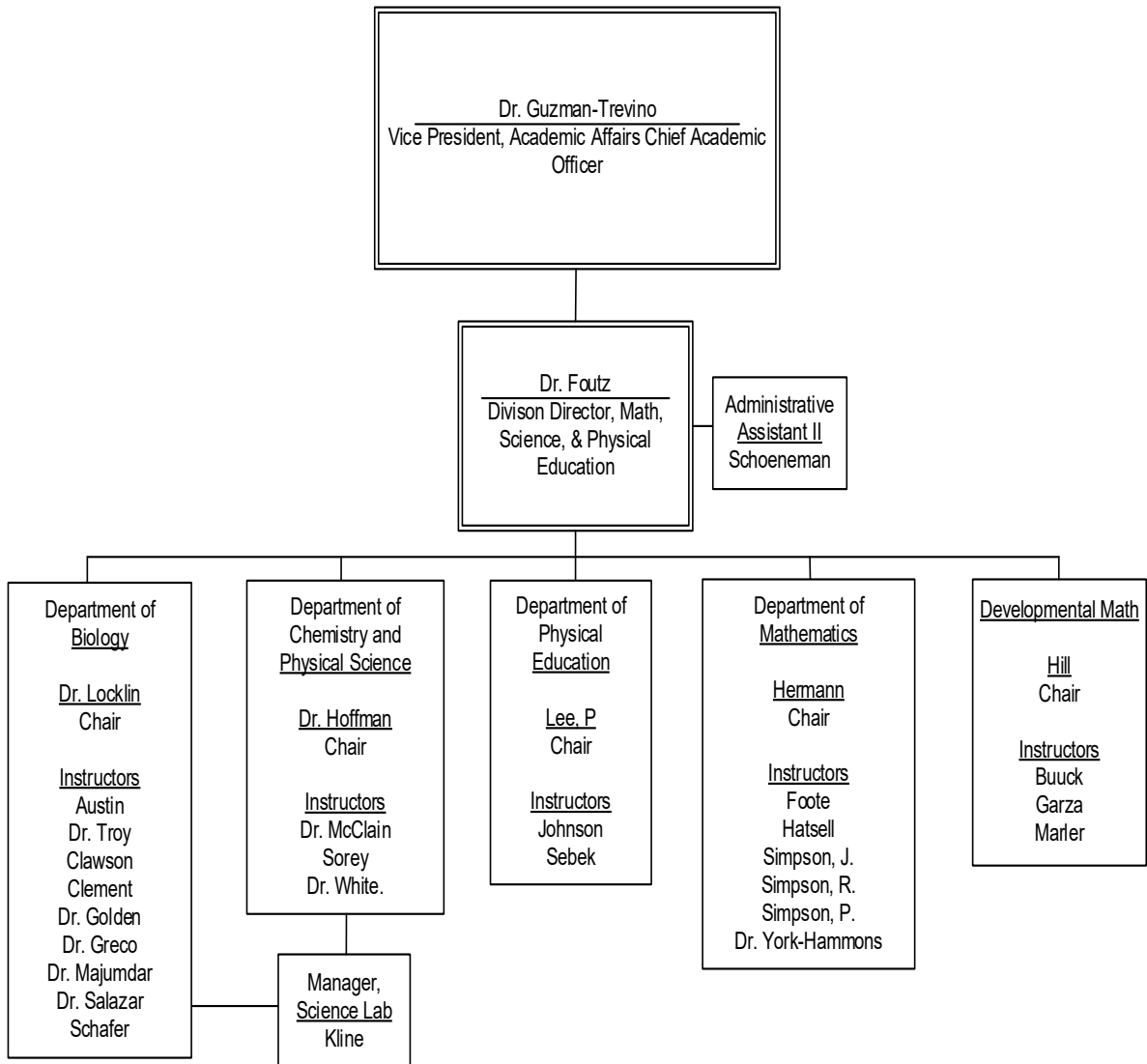
Division of Health Professions



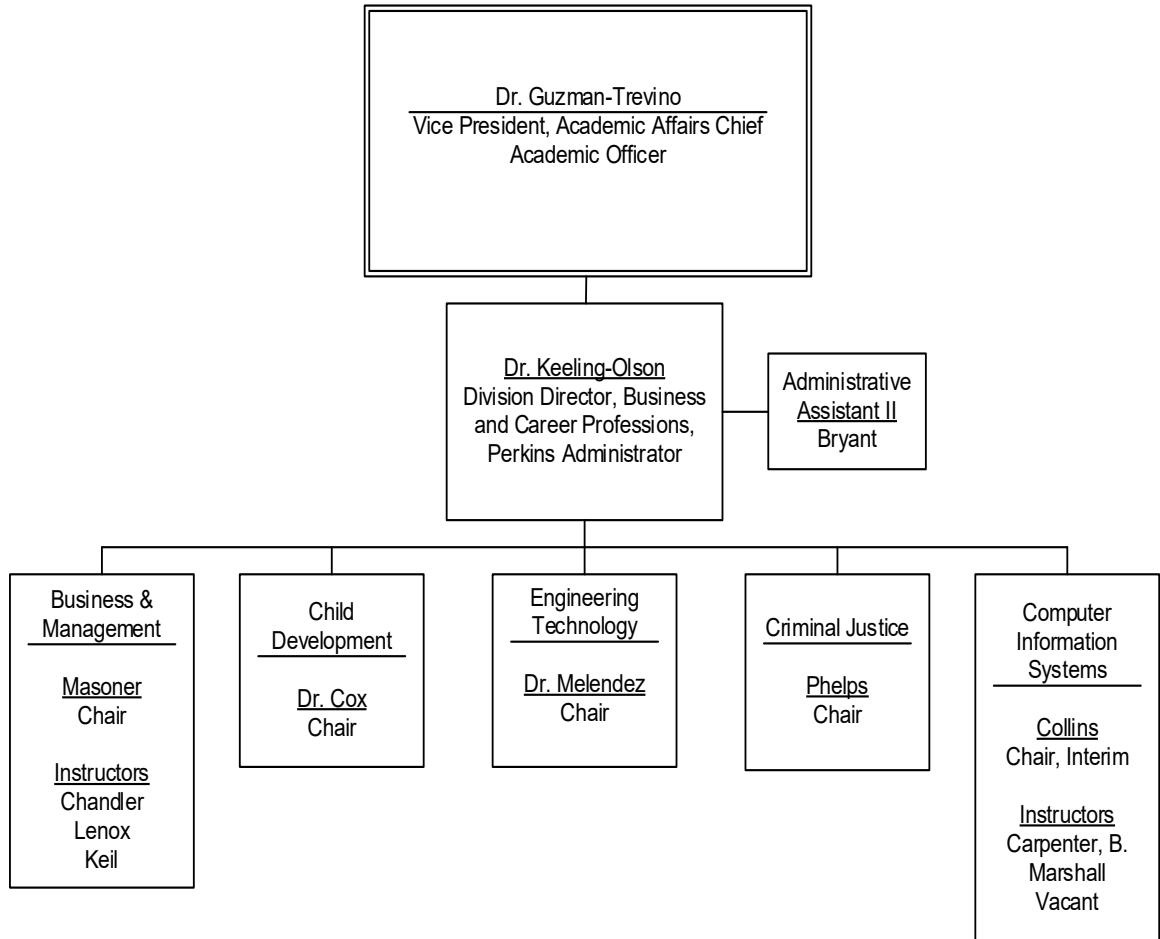
Division of Learning Resources



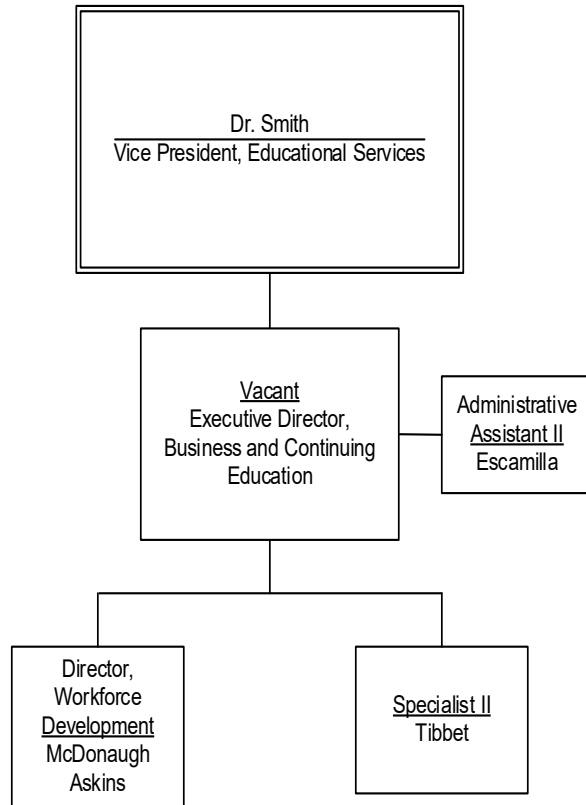
Division of Mathematics, Science, and Physical Education



Division of Business and Career Professions



Division of Business and Continuing Education





Temple College Foundation

Ginger Watkins
Foundation Board President

Graham
Executive Director,
Institutional Advancement

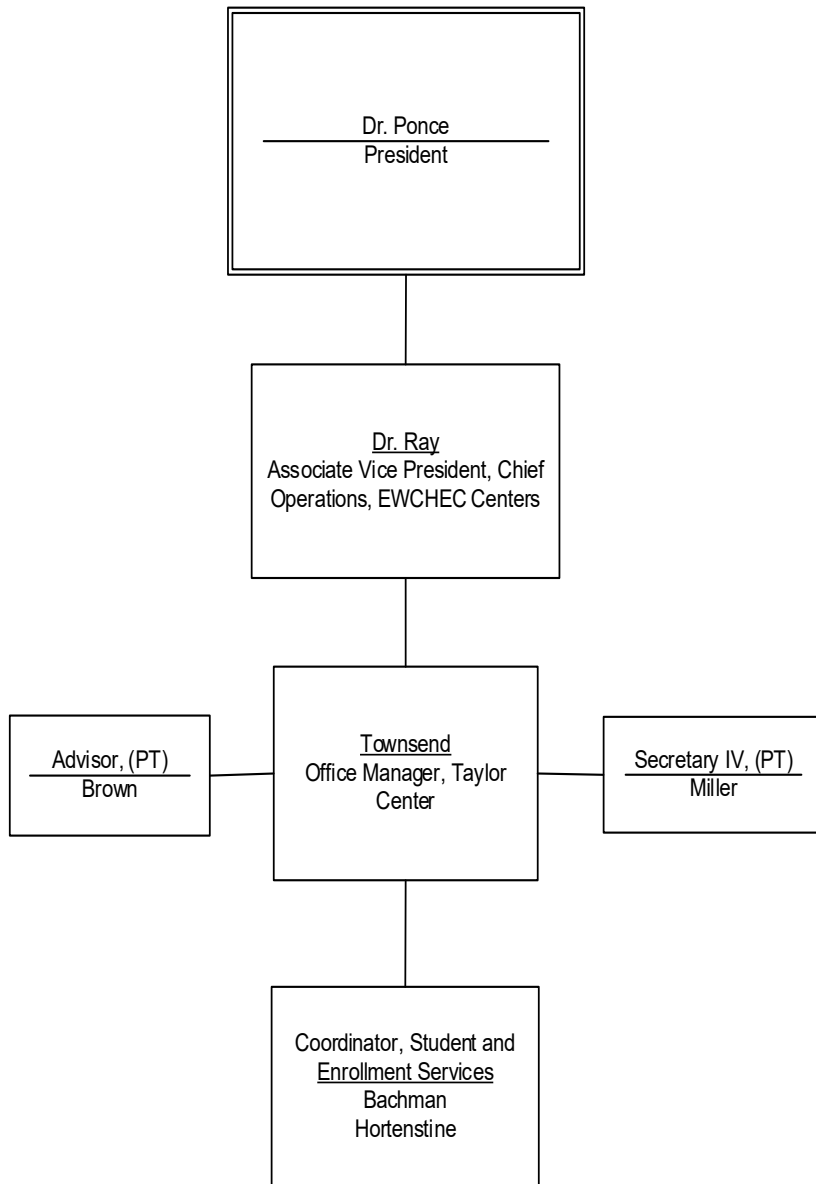
Ray
Bookkeeper

Vacant
Development Director

Vacant
Leopard Loan Manager

Vacant
Workforce Preparation Managers

EWCHEC Taylor



EWCHEC Hutto

