

**EAST WILLIAMSON COUNTY HIGHER EDUCATION CENTER - TAYLOR
BUILDING EMERGENCY PLAN**

- 1) Building Name & Number: EWCHEC - Taylor -- 13
- 2) Emergency Management (EM) Liaison:
 - Name – Jaqueline Miller
 - Campus Address – ETCT 120
 - Phone Number – (254) 298-8960
 - Email – millerj942@templejc.edu
- 3) Alternate (EM) Liaison:
 - Name – Suzanna Bachman
 - Campus Address – ETCT 120
 - Phone Number – (254) 298-8954
 - Email – hernandezs408@templejc.edu
- 4) Departments:
 - a. Administration:
 - Contact Person – Robbin Ray
 - Campus Address – Hutto Campus Office B123
 - Phone Number – (512) 759-5610
 - Email – robbin.ray@templejc.edu
 - b. Facility Services:
 - Contact Person – Scott Benson
 - Campus Address – Hutto Campus Office - A105
 - Phone Number – (512) 759-5945
 - Email – scott.benson@templejc.edu
- 5) Evacuation Routes: (see map)
- 6) Emergency Assembly Point – outside the facility:
 - a. West side of the front parking lot, @ 5th Street and Main (near decorative landscaping of trees and shrubs).
 - b. Back corner parking lot corner of 6th & Porter
- 7) Designated Shelter Area – inside the facility:
 - a. Back hallway with overflow in rooms
 - b. North classes – Nursing lab
 - c. Internal or back hall classes (EWHC 122, EWHC 142 and EWHC 103) south front hall
- 8) Location of Emergency Equipment:
 - a. Fire extinguishers:
 - In the south hallway across from room 131
 - In the center hallway across from room 123

- In the north hallway across from 113
- In the kitchen which is right off of the Main Office room 120

b. First aid supplies:

- Inside the door of room 141 Chemistry Lab
- Inside the Chemistry Prep Lab room 141A near the doorway that can enter the Chemistry Lab
- Inside the door of room 142 General Science
- Inside the door of 144 Microbiology
- In the Main Office room 120 on the back wall
- In the Faculty Office room 112 near the door

c. Automatic external defibrillators:

In hallway between Legacy ECHS and Temple College, hung btw rooms 104&105

9) Potential Fire Hazards (i.e., combustible materials, flammable gases, etc.):

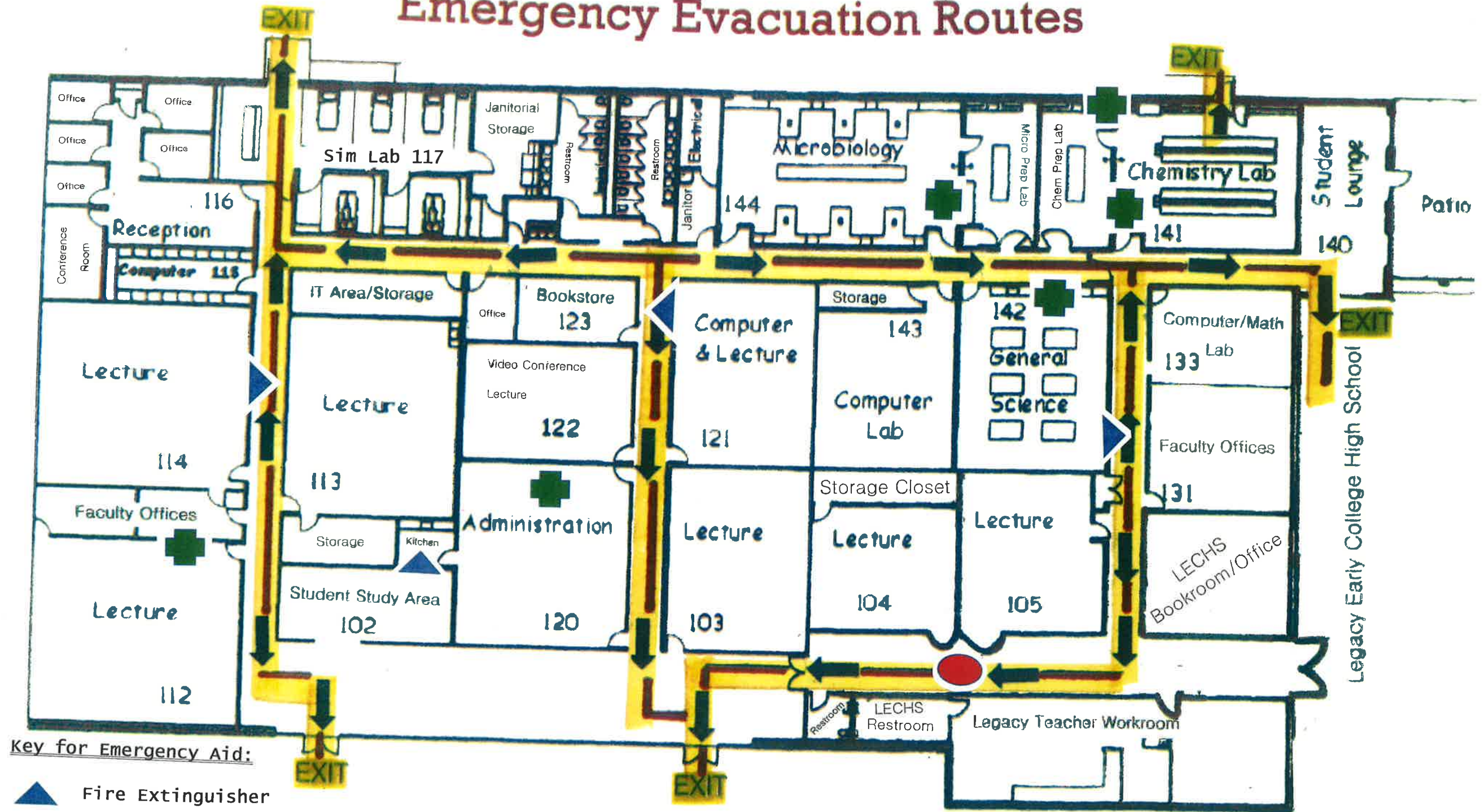
Flammable chemicals in chemistry and microbiology labs

10) Listing of Critical Records and/or Equipment:




None

Temple College at Taylor

Emergency Evacuation Routes

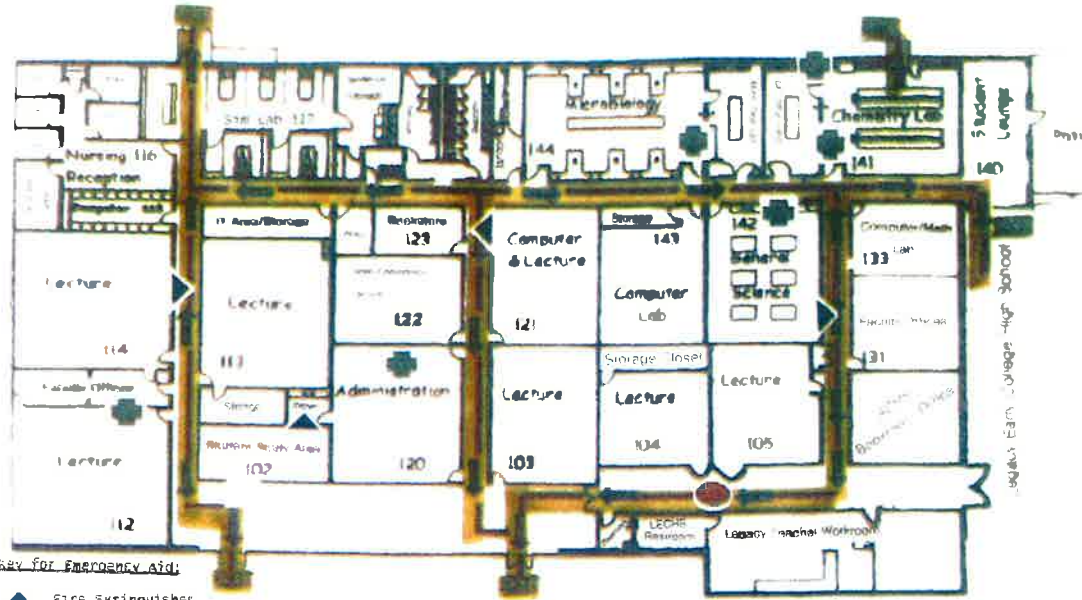


Key for Emergency Aid:

-  Fire Extinguisher
-  First Aid Kit
-  AED Automatic External Defibrillator

Temple College at Taylor

Emergency Assembly Points Outside of the Facility

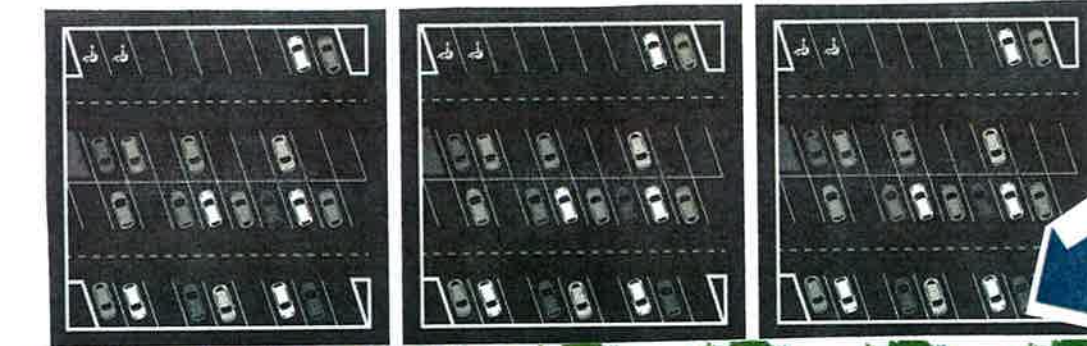


Key for Emergency Aid:

- ▲ Fire Extinguisher
- ⊕ First Aid Kit
- AED Automatic External Defibrillator



Meet Here
Student Parking Lot behind the Building
Corner of Sixth and Porter Streets



Meet Here
Parking Lot in front of the Building and the Sidewalk
that Runs along Main Street

