



# Overview 5

## **Folders and Paths**

Instructor Notes	106
Folders and Paths	106
Visualizing paths for lab 3	110
Test 1 Review	113
How to: Study	115
Hot to: Take a Collins test	116
Lab 3	117
How to check for HTML errors	42
Zip	70
D2L Dropbox and Quizzes	72
Completing Overview 4	124

For Overview 5

## Instructor Notes on Carey Text Session 2.3

The rest of the chapter discusses linking to documents stored in different directories, or linking to non-webpage parts of the Internet... read over this section to get a rough idea of the process, and we will cover directory use in my notes on Paths, and included is a handy reference.

`<a href="mailto:email address">text</a>` to send an email, but using this has two problems... if you use a web based email program, the link to send an email won't work. It also opens you to a lot of spam if you include a mailto. We will revisit **ftp** `<a href="ftp://URL">` later in the semester... let's focus on creating pages before we start transferring (ftp'ing) pages. (While great at downloading large files for guests at a web site, the real value of ftp is that it is the most robust way to **upload** to your account, such as delivering your finished web pages to the server.)

And for the moment, pretend the tag `<link />` does not exist... it is too easy to confuse with the body attribute link (which sets link colors), and the anchor tag that creates hypertext links that appear in the body of the document.

## Folders and Paths

In order to better organize your files, say web pages in one place, and images in another, the easiest thing to do is to create folders. However, this will change how you reference web pages for links, and images to display. Instead of simply listing the file name, you will direct the browser to locate the appropriate folder, and then select the file. This is called the path. In Windows you use absolute paths... that is, what drive, what folder, what filename. Example: `O:\IMED1316\Lab2\page1.htm` tells the computer exactly where the file is.

But that doesn't work in web pages. If someone asks you where a class is, you don't begin your directions from downtown; instead you would begin your directions where you are now. This is called a relative address. In web pages, we **ONLY** use relative addresses; where is it, in relationship to what the computer is looking at right now.

Navigating (relative, web page) paths

If files are in the same folder, simply name the files

```
"filename.htm"
```

if files are in a folder below, name the folder and then name the file

```
"folder/filename.htm"
```

if files are above, get out of the current folder with `../`, then name the file or folder, and then name the file

```
"../foldername/filename.htm"
```

or

```
"../filename.htm "
```

Example A (the old fashioned way, as in lab 2):  
Web page saved in Lab3  
image1.gif saved in Lab3



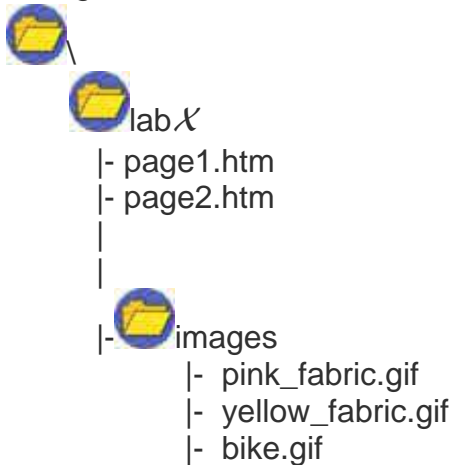
```
 or add height, width, and alternative text information  

```

Example B:

Web page saved in Lab X

bike.gif saved in a folder inside of Lab X called images, Windows path: Lab X\images



```
 or add height, width, and alternative text information  

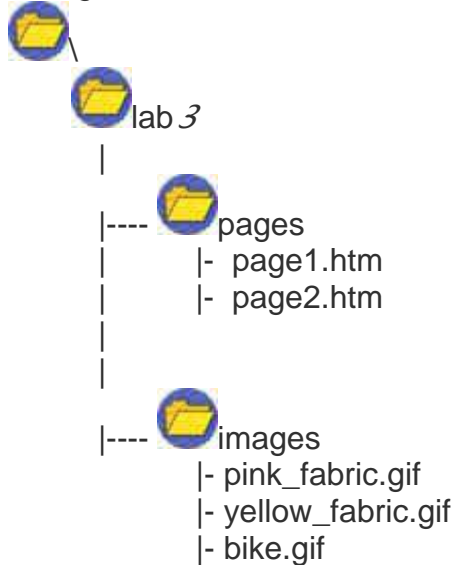
```

The '/' character directs the browser to first find the folder named 'images', then look inside for the file named 'bike.gif'

## HTML and the Art of the Web Page

Example C: (as in Lab 3)

Web page saved in a folder inside of Lab3 called pages, Windows path: Lab3\pages  
bike.gif saved in a folder inside of Lab3 called images, Windows path: Lab3\images



This requires the browser to go UP from the pages folder, then down the path toward bike.gif

`` or add height, width, and alternative text information

```

```

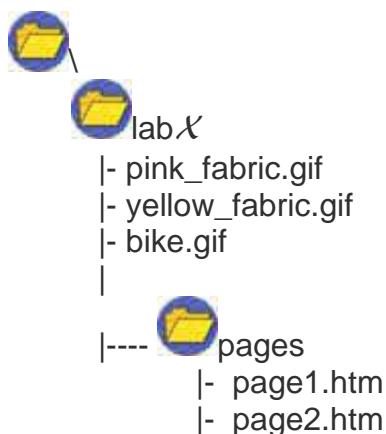
The '../' characters direct the browser to go UP one level, then drop back down into the folder images, and find the file named 'bike.gif'

**Note: the links from web page to web page remain**

**`<a href="filename.htm">click here</a>`, as they are in the same folder**

Example D:

Web page saved in a folder inside of Lab X called pages, Windows path: Lab X\pages  
bike.gif saved in Lab X



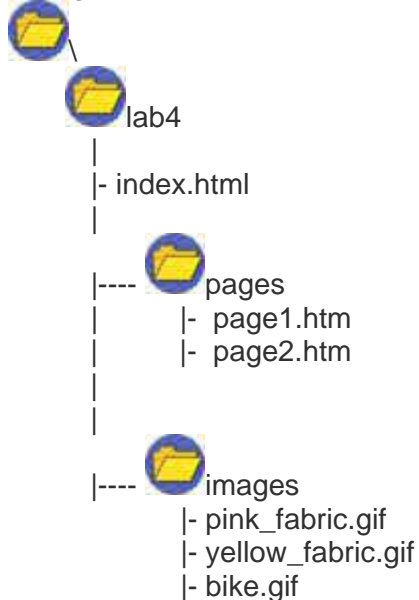
```
 or add height, width, and alternative text information

```

The './' characters direct the browser to go up one level, then look inside that folder for the file named 'bike.gif'

### Example E: (as in Lab 4)

Web page saved in a folder inside of Lab4 called pages, Windows path: Lab4\pages  
bike.gif saved in a folder inside of Lab4 called images, Windows path: Lab4\images



For index.html to display an image requires the browser to open the images folder, then open bike.gif

```
 or add height, width, and alternative text information

```

For index.html, to link to a web page, such as page1.htm, you apply the same logic: open the pages folder, then choose page1.htm

```
<a href="pages/page1.htm">Click here</a>
```

(For page1.htm to link to index.html, use `<a href="../../index.html">Click here</a>`)

### Summary

If files are in the same folder, simply name the files

```
= "filename.htm"
```

if files are in a folder below, name the folder and then name the file

```
= "folder/filename.htm"
```

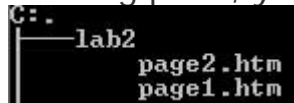
if files are above, get out of the current folder with './', then name the file or folder, and then name the file

```
= "../../foldername/filename.htm" OR = "../../filename.htm"
```

## Visualizing paths for Lab 3

The important thing to realize is, one a web site such as mine, I have thousands of files; it would be a nightmare to store them all in one single folder, as I wouldn't be able to find them easily. A path is just a series of folder that have to be opened until you locate the file.

Starting point, your Lab 2 folder structure.



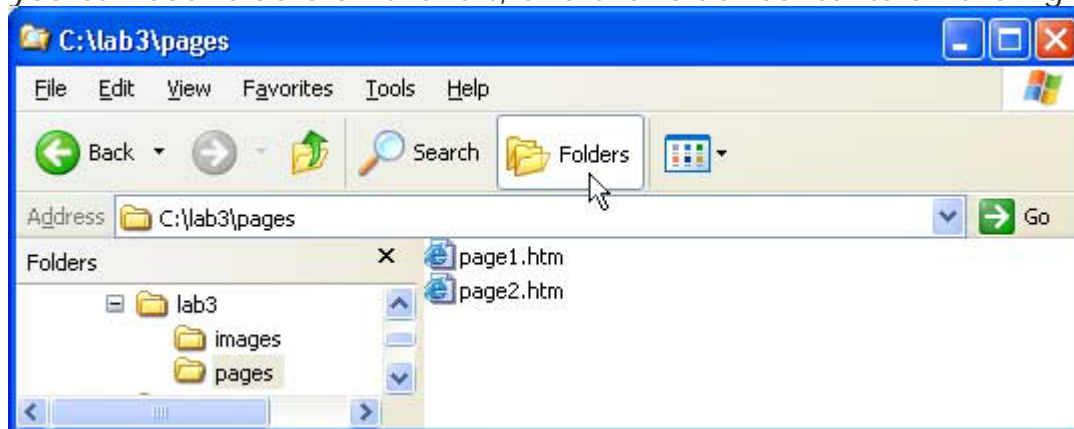
Open My Computer, and create the lab3 folder.

Inside the lab3 folder, create a folder named 'pages', and a folder named 'images'.

Copy your page1.htm and your page2.htm files into the 'pages' folder. You will also copy two graphics files from the class web site, into the 'images' folder.



When working in Windows, it may help to click the [Folders] button so you can see folders on the left, and the folder contents on the right.



Note: The 'pages' folder on the left is highlighted, meaning the files displayed on the right are its contents.

Note: The Address bar indicates the full or absolute path to the files.  
C:\lab3\pages

Note: For the Internet, you use **../** instead of \

Since the two files can 'see' each other, all that is required to link to the other file is to name the file in the href, such as  
<a href="page2.htm">to page 2</a>

But you will be saving the graphics in the images folder. So,

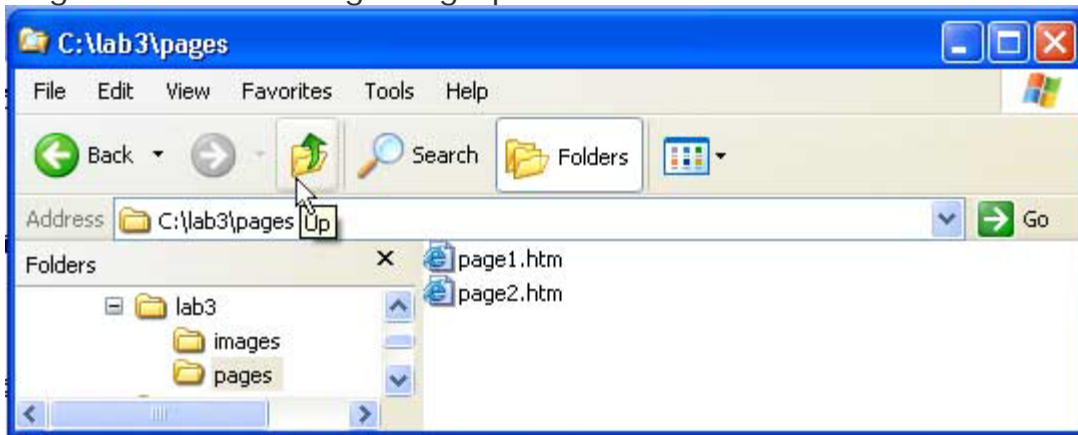
<body background="yellow\_fabric.gif" etc> **won't work.**

For the page2.htm to 'see' that file, you need to code its **relative** address.

That is, how to find the file, from **this** location.

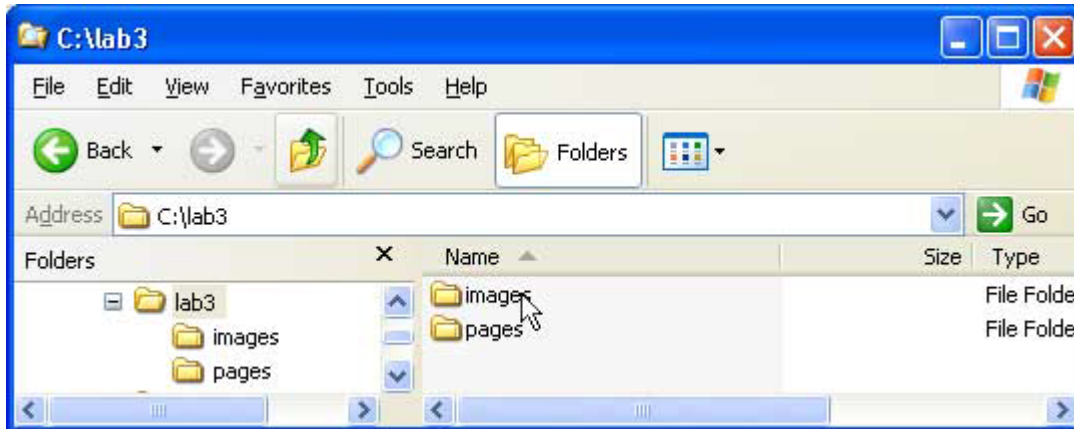
If you can locate the file in 'My Computer', you can *code those steps* into your web page.

1.) Starting in 'pages' you need to click the "←Back" or "Up" folder button to get closer to seeing the graphics files.



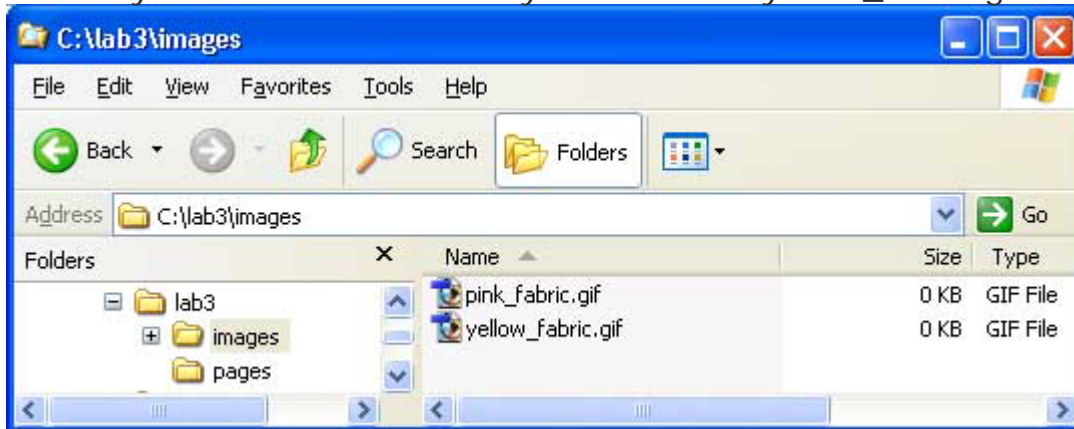
Going "Back" or "Up" is coded **../** in HTML.

2. Now you can see the images folder. To see the contents, you would select it.



To select the images folder in HTML, you add images/ to your prior code, giving you  
../images/

3. Now you can see the file. So you can select yellow\_fabric.gif




To select the file in HTML, you add the filename yellow\_fabric.gif to your prior code, giving you  
../images/yellow\_fabric.gif to the finished line, giving you the finished product:  
**<body background="../images/yellow\_fabric." etc>**

Just remember, just code the same steps you would use, if you were locating the file using 'My Computer'

# Test 1 Review

Before continuing, verify you are caught up with class participation discussions and MUDs.

To check your progress: in the D2L classlist, choose the circular blue icon by your name ; to check your Discussion progress, use the dropdown Tool and select Discussions... choose Apply.

You will need to scroll down to see which discussions you have and have not posted to. Your participation grade will be penalized at the end of the semester for discussions you have not posted to.

*Feel free to copy the web version of this to a word document and send it to me... I won't give you the right answers necessarily, but I'll let you know where you still need a little work.*

*(Check below for my Study Tips)*

*(Check below for my Test Taking Tips)*

*PS, The first part of the final will include the same information as Test 1. I also suggest you Log into D2L, chooses Quizzes, then choose to take the Practice Test.*

- What happened in 1957 that started the Internet ball rolling? (Hobbe's Time Line)
- What was the Internet called in 1969, when it first started?
- Who wrote the 1990 law that funded the Internet when the military formed their own network?
- Who devised the World Wide Web, the prototype web browser?
- Who created the first web browser for personal computers, and what was it called?
- Who created the first commercial web browser, and what was it called?
- Name several Netiquette rules, and explain.
- What language are basic web pages written in?
- How can you enter a comment in HTML? Give an example
- Fill in the following web page to include the required tags

```
< >
< > < > < > < >
< >
< >
< >
```

- What tag set holds the entire web page?
- What tag set holds the computer use portion?
- What tag set holds the user viewable portion?
- What tag set displays words on the blue bar above the web page?
- What attribute changes the color of a web page's background?
  - What attribute changes the color of a web page's text?
  - What attribute changes the color of a web page's link color?
  - What attribute changes the color of a web page's visited link color?
  - What tag creates a break?
  - What tag set surrounds a paragraph?
  - What tag creates an image?
  - What attribute must be used to point to the image's source?

## HTML and the Art of the Web Page

- In `img src="file" alt="text"`, what is `alt` used for? Who is it important for?
- Are links the same as hyper-text links?
- What tag creates a link?
- What attribute must be used to point to the link's hyper-text reference?
- How many different headings (headlines) are there, and what are they?
- What tag creates a horizontal rule?
- What tag creates a numbered list?
- What tag creates a bulleted list?
- What tag is used to introduce an item into a list?
- What tag creates a link to `pagetwo.htm`, on your web site?

< >

< >

- What tag set creates a bookmark called `verytop`?
- What tag set creates a link to a bookmark called `verytop`, on the same web page?

< >< >

< >

< >

- What tag set creates a link to Temple College's web site?

< >

< >

- What does deprecated mean?
- What typed characters do special characters begin with? What typed characters do special characters end with?
- List the Carey's tips for Good HTML Code (page 44 of this book)
- Previously, we used `body bgcolor`; now we add `background`. Why use both?
- For lab 2, `page1.htm` and `page2.htm` were together. In lab 3, images are in one folder, and pages in another. Question: why didn't we have to change the `href` statements from lab 2?
- Continuing from above, we just need to specify a file we are linking to, so why do we have to add a path in order to display images for lab 3?
- What is an absolute address?
- What is a relative address?
- Using relative addresses, how do you navigate paths to folders above, or below?
- You can also link to an ftp server. How do you change the URL?
- By the way, what is ftp?
- What is added to the URL if you want your link to send email?
- What are the problems with using a link to an email?
- By default, a `href` will open the linked document in the same window (similar to `target="_self"`). What does `target="_blank"` do?

# How To: Study

Most learning is easiest to recall in a similar environment to where you learned it... meaning if you only study at night, taking a test during the day, at a foreign location, testing can be a problem.

To minimize this, follow the following guidelines.

- Don't Cram
- Don't load up on caffeine
- Don't load up on sugar
- Don't change too much of your routine

Cramming isn't learning, as the info just goes into short term memory, which evaporates like RAM when you write your name on the test. Instead, try to really learn the material by reviewing daily, and making a list of things that give you trouble. Focus on those items, instead of confusing things you actually already know. The next day, make a new list, which should be shorter, until you get to test day, and you are comfortable with all the material. Do some gentle review around the time of day you plan to take the test, to overcome the foreign testing situation even further.

Some of you will still cram, though. You'll stay up late, and then you'll show up at the testing center dead tired... don't go get some coffee! Caffeine is actually a depressant that will drop you after it gives you a case of hyper nerves.

But you're still tired... (because your crammed, and didn't sleep) so if you can't have a coffee or cola, maybe you're tempted to have a dozen Krispy Kreme donuts for some quick energy, instead. DON'T! Sugar is muscle food, not brain food. You'll have plenty of energy to run to the testing center, but you will have diverted blood flow away from your brain.

But what if you normally stay up until 3:00 am, get up to a gallon of coffee and a box of Ding Dongs? Well, don't break your routine... stay in routine as much as possible... again, night owl may need to practice getting up a day or two before the test.

Test taking is about decisions, here are a few tips on actually selecting the right answer.

- Read the whole test... it is almost impossible to make a test that doesn't reveal some answers somewhere else.
- Look for distracters and keywords... distracters are important looking words that have nothing to do with what is really being asked. Keywords on the other hand should alert you to the meat of the question.
- Go with your first reaction, it is usually right.

Finally, no one will care what you made on a test in five years... so don't stress. In a well designed class, a test is a learning tool, not punishment. It points out where you still need work, and gives you the opportunity to actually do what school is supposed to be about: learning!

PS After you take your test, you can start calculating your GPA. You may use the Excel spreadsheet on the class website, if you like.

## How To: Take a Collins Test

1. Make sure you go over the review material... you may submit the review for instructor's feedback
2. Take the practice test in [D2L](#), to see how they work
3. There is no such thing as a multiple choice job interview, expect the tests to include fewer multiple choice questions and more fill in the blank and short essay questions as the semester progresses.  
(The test material isn't harder, but I expect you to be able to supply more information)
4. Look over the entire test before you begin answering questions
5. Read the question thoroughly before answering;  
some fill in the blank questions may specify a choice of answers;  
some questions specify using a single word, tag, or command.  
Part of the real world is following directions...please don't expect me to give you credit because you didn't follow directions
6. Save your answers by clicking the disk icon.  
If the save button doesn't work, verify you are submitting the appropriate type of answer... such as numbers instead of letters for matching.
7. If the answer still will not save, IMMEDIATELY close the quiz WITHOUT submitting.  
Return to the quiz and choose **Continue Quiz**.
8. Typos are auto-graded as incorrect. If the computer operation in the real world wouldn't accept an instruction or command, the test won't either.  
Note: I do manually review each test, and award credit where appropriate (I can't foresee all valid responses)
9. Resist the urge to change the answer to a question unless you realize you misread the question, or another question reminds you of the correct answer;  
often (but not always) your first choice is the correct choice
10. Questions that include the word DISCUSS imply I am looking for **more** than two or three words. Be thorough, but no need to be long winded
11. Short answer/short essay are marked incorrect immediately after taking the test... I will manually review each test, and add back in points.
12. After taking the test, you will have the opportunity to review the questions... recall, **the grade shown is not valid** until the tests are reviewed by me. The class will be notified when the grades are correct.
13. The highest grade in the class sets the curve mark... if the highest test grade is a 97, everyone gets 3 points added as the curve
14. If the majority of students miss a question, I will often determine the question was bad, and not count it against you, but still award points for those who got it right.
15. If you do poorly on a test, recall from the syllabus and appendix that the lowest test score can be improved if you do well on that section of the final.
16. The final exam is basically taking the same three tests again... so review your individual test study guides, and review your tests in D2L.
17. To look over a previously taken test in D2L, choose the Quizzes area, select the test, then go to the submissions tab.

# Lab 3



A video similar to completing lab 3 is available on the class web site.

## General Lab Directions

Note: There is not enough time in lecture to cover all the material; read your book BEFORE you begin the lab

Note: Typically labs will require you to invest some time in the lab, outside of class lecture hours

Check with your Instructor for due date, typically Friday, 11:59PM (see due dates on web site)

•NOTE: Do NOT use CAPITAL letters OR spaces in file names.

•NOTE: Do NOT use curly quotation marks, such as ”; only use straight quotation marks, such as " .

- Note: If you need to stop work on a web page:  
Save your changes in your text editor (Notepad)  
When ready to resume,  
open the file in notepad  
and  
double click web page to open browser

## Part One: Documentation (30%)

Attributes to document must include:

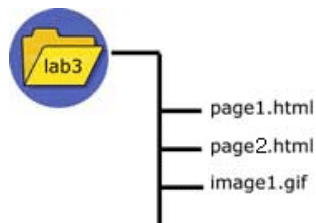
target

(modifies the anchor tag, as in <a target="something">)

background

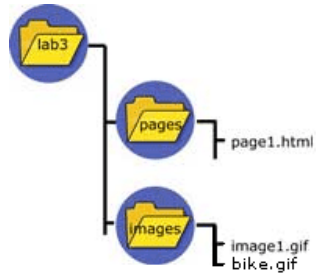
(modifies the anchor tag, as in <body background="filename">)

Fill in what goes in the blank below, based on the situation



If two pages are in the same folder, to link to a web page named page2.html, use \_\_\_\_\_

## HTML and the Art of the Web Page



The web page is in lab3/pages, the images are in a lab3/images, to display one of the images named bike.gif, use ``

Update your documentation of the `<a>` tag to include the `name=` *and* `target=` attributes, etc., and expand documentation of the `<body>` tag to include the `background=` attribute

Tag: Body `<body>` `</body>` (10 points)

Syntax (required and [optional attributes]); include `text=`, `bgcolor=`, `link=`, `vlink=`, **and** `background=`

What does each of these do?:

Example:

```
<body  
    >
```

```
</body>
```

Notes:

Tag: Anchor `<a>` `</a>` (10 points)

Syntax (required and [optional attributes]); include `href=` `name=` **and** `target=`

What does each of these do?:

Example:

```
<a  
    >
```

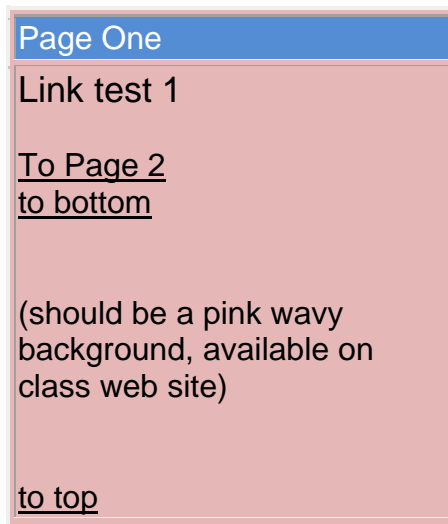
```
</a>
```

Notes:

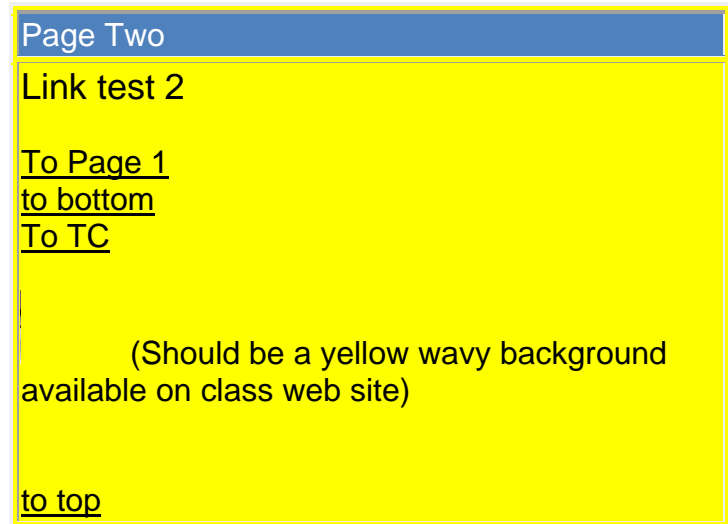
## Part Two: Activity: (40%)

- Create a folder named lab3
- Using a text editor, create two pages, **page1.htm** and **page2.htm** in the lab lab3 folder (QUICKSTART ALTERNATIVE: copy your lab2 FOLDER, and rename the copy to lab3)

page1.htm



page2.htm



### Grading Points (Lab 3)

Modifications :

- **10 points Make Folders**  
Create a folder in lab3 named pages  
Create a folder in lab3 named images
- **10 points File placement**  
**move** page1.htm and page2.htm into pages  
copy pink\_fabric.gif from the class website to images  
copy yellow\_fabric.gif from the class website to images

Reminder: to copy a file, right click.  
You did this with dube.jpg in lab 1...  
So, either  
right click the images above and choose  
Save Background As  
or  
right click the links above and choose  
Save Target As

make sure you save the files in the images folder

- **10 points add backgrounds**  
To the page1.htm body add `background="../../images/pink_fabric.gif"`  
To the page2.htm body add `background="../../images/yellow_fabric.gif"`

- **10 points Add image**

Copy a picture, preferably of you, to the images folder (you may use [class pics](#) on the class website if you don't have a better image)

On page2.htm, include this picture;

**use img with src and alt parameters.**

*You may also want to use the*

*width=,*

*if your picture displays very large, perhaps width="144"*

*(72 pixels to an inch on most monitors)*

(Look in the Paths section, page 98, of this book for examples)

(How to check for HTML errors, page 42)

We'll discuss modifying the picture during the next tutorial

### **Part 3, Hands On Questions (30%)**

Be prepared to show the functionality of your web page, and discuss/demonstrate new tags and attributes used in this lab.

You may download an [acrobat or word processing](#) document to help you with this.

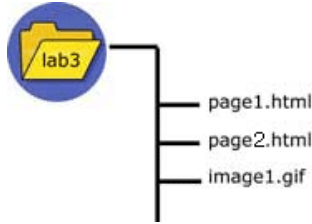
**At the end of this process**, you will be turning in answers using the Quizzes area of [Desire2Learn](#), based on the following questions. So, to get the best score, fill in all the answers in this document first.

Posers, could you answer the following on the test? (Specific Lab questions below.)  
Answer the following questions

- Previously, we used body bgcolor=; now we add background=. Why use both?
- Why didn't we have to change the a href statements from lab 2?
- If we had an img src in lab 2, why would we have to change the img src statements in lab 3?
- What is an absolute address?
- What is a relative address?
- You can also link to an ftp server. How do you change the URL?
- By the way, what is ftp?
- What is added to the URL if you want your link to send email?
- What are the problems with using a link to an email?
- By default, a href will open the linked document in the same window (similar to target="\_self"). What does target="\_blank" do?

**Actual questions from the D2L Quiz follow**

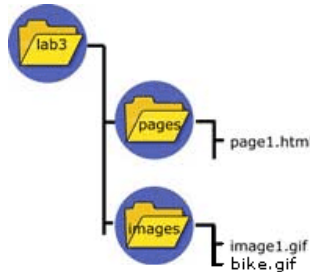
**Question 1**



If two pages are in the same folder, to link to a web page named page2.html, use

- c: \page2.html
- images/page2.html
- pages/page2.html
- page2.html
- c: /page2.html

**Question 2**



The web page is in lab3/pages, the images are in a lab3/images, to display one of the images named bike.gif, use 

- bike.gif
- /bike.gif
- ../images/bike.gif
- pages/bike.gif
- images/bike.gif

**Question 3**

Match the following (just type in the number)

- the body tag attribute used to change the default color of a link that has been previously clicked
- the body tag attribute used to change the default color of the entire web pages background
- the body tag attribute used to change the default color of a link that has not been clicked on
- the body tag attribute used to change the default color of text
- the body tag attribute used to change the default color of a link as it is being clicked
- the body tag attribute used to display a background image

- 1. text
- 2. bgcolor
- 3. link
- 4. vlink
- 5. alink
- 6. background

## HTML and the Art of the Web Page

### Question 4

Match the following (just type in the number)

- |  |  |
|--|--|
| <input type="checkbox"/> the anchor tag attribute to control if a link opens in the same web browser window, or a different web browser window | 1. href  |
| <input type="checkbox"/> the anchor tag attribute to create a named bookmark   | 2. name  |
| <input type="checkbox"/> the anchor tag attribute to create a link   | 3. <code>&lt;a href="page2.html"&gt;to page 2&lt;/a&gt;</code>           |
| <input type="checkbox"/> example of creating an intrapage link to a bookmark   | 4. <code>&lt;a href="http://www.templejc.edu"&gt;to T C&lt;/a&gt;</code> |
| <input type="checkbox"/> example of an internet link   | 5. <code>&lt;a name="topp"&gt;&lt;/a&gt;</code>                          |
| <input type="checkbox"/> example of creating a bookmark  | 6. <code>&lt;a href="#topp"&gt;to Top&lt;/a&gt;</code>                   |
| <input type="checkbox"/> example of a local link   | 7. target  |

### Question 5

Previously, we used  
`body bgcolor=`  
now we add  
`background=`  
Why use both?

To control the background color in case the background image does not download. True or false?

- True
- False

### Question 6

Why didn't we have to change the `a href=` statements from lab 2?

- Because the background image is different for both pages
- Because the files have now been segregated into different folders, meaning images and pages are in different folders; so, we would need to specify a path
- Because the pages are still in the same folder, so the path didn't change

### Question 7

If we had an  
`img src=`  
in lab 2, why would we have to change the  
`img src=`  
statements in lab 3?

- Because the pages are still in the same folder, so the path didn't change
- Because the files have now been segregated into different folders, meaning images and pages are in different folders; so, we would need to specify a path
- Because the background image is different for both pages

### Question 8

Match the following (just type in the number)

- |                          |   |                       |
|--------------------------|---|-----------------------|
| <input type="checkbox"/> | an example of an absolute address, which is not allowed in web pages  | 1. absolute address   |
| <input type="checkbox"/> | an example of a relative address, which is required in web pages      | 2. relative address   |
| <input type="checkbox"/> | The specific location of a file, without considering present location | 3. c:\images\bike.gif |
| <input type="checkbox"/> | Directions to find another file location, from current location       | 4. ../images/bike.gif |

### Question 9

You can also link to an ftp server. How do you change the URL?

- `<a href="http:// ... target="ftp"`
- `<a link="ftp:// ..."`
- `<a href="ftp:// ..."`
- `<a ftp="www. ..."`

### Question 10

By the way, what is ftp? ftp stands for **forward to page**, and is used to upload files from your computer to a web server

- True
- False

### Question 11

What is added to the URL if you want your link to send email?

- `<a href="mailto: &nbsp;..."`
- `<a href="mailto: &nbsp;..."`
- `<a href="mailto:="&nbsp;..."`
- `<a href="mailto: &nbsp;..."`

**Question 12** What are the problems with using a link to an email?  
(Choose the one best answer)

- you open yourself up to increased spam
- people with web based email won't be able to use the link
- you open yourself up to increased spam **and** people with web based email won't be able to use the link
- Users complain about increases in spam

### Question 13

What does target="\_blank" do?

- Opens the link in a new browser window
- Opens the link in the same browser window
- Splits the browser into two windows, and opens the link in the second window
- Opens a blank email window

## SUBMITTING THE LAB

In Windows, zip the entire lab3 directory, and rename to yourname-lab3.zip. Directions on page 70.

Log into Desire2Learn, choose this class, choose Dropbox, select Lab 3. Browse to yourname-lab3.zip and upload it. (See page 70 or class website for detailed instructions)

You will then transfer your answers to the D2L Quiz for lab 3. You may use your notes for this part of lab. Choose the Quizzes menu, and locate Lab 3.

## Completing Overview 5

- Submit by 11:59 pm, Friday, of the current week (see due dates on course web site)
  - Lab 3 as directed

### MUD 5 (My Understanding, Details)

Respond in the class D2L Discussion forum to the following:

What topics, if any, during this time frame do you feel very comfortable with? Why?  
What topics, if any, during this time frame do you not feel comfortable with?

- Participation Discussion 5 Respond in the class D2L Discussion forum to the following:
  - It seems so much simpler to just store all your files in one place, and not have to use paths; name at least one benefit from storing files in different locations



---

For the next time frame:

- Read Part one of Tutorial 3
- Each test has a review; you may wish to write out pertinent information from the readings and activities
- After completing this overview, you may wish to preview Lab 4