



Overview 12

HTML Style and ftp

More on formatting	272
W3C, World Wide Web Consortium	225
HTML Styles	273
Instructor notes	277
Reminder of ftp	23
Reminder of ftp	106
OPTIONAL: ftp background	277
ftp for the lab	280
Lab 9 Overview	285
Submitting the Lab	79
Zipping	80
D2L Dropbox	81
Completing the Overview	2

More on formatting

This book previously covered basic format options, and many are similar to features in word processing:

`<i>text</i>` for *italic*

`text` for **bold**

and modifying tags to center text, etc.

The following section covers

- spaces, tabs, and form feeds,
- In-line formatting with `<tag style="..."> </tag>`, and
- block formatting with `<div align="..."> </div>`

More fun with spaces and text placement (on screen, or printed)

You know about non-breaking spaces, (` `), but if your computer reads ASCII (Windows reads ASCII), you might also try the ASCII tab (`	`). Or, if you wish items to print on separate pages, insert the ASCII form feed (``)

In-Line Formatting, using a style `<tag style=...>`

`<tag style=...> </tag>` **or** ` `

Up until now, if you just wish to change the appearance of a few words, you used `text`.

As mentioned earlier, `` has been **deprecated**, or is being phased out; one of the preferred methods now is using in-line formatting, such as

` text`.

(The `span` is simply a tag that says start formatting here.)

That is, you add a style **property** and **value** to an **existing tag**, such as a headline, or a paragraph, or `span`.

I like to use **span**; like `paragraph`, it surrounds some text, but does not force the line breaks that `<p></p>` does.

Style Examples

Style property declarations have the form "property: value" and if there are several options to be used, they are separated by a semi-colon (;), such as

```
<h1 style="text-align: center"> </h1>
<p style="text-align: center"> </p>
<span style="color: red; font-size: 14pt"> </span>
<span style="font-weight: bold"> </span>
<span style="font-family: Arial, Helvetica, sans-serif"> </span>
or
<img style="float: right" ... > </img>
```

Other books START coding with quite a lot of in-line formatting, but this type of HTML is very rich, with almost too many options (a brief list is on page 276). So, styles I think are best implemented if you are using an editor, such as Dreamweaver where first you create a style, and then you apply the style to whatever text you wish to format; more on that shortly.

Aligning by dividing your page into blocks, or divisions: <div>

One step up from applying placement to a paragraph or headline, such as `<p align="right">Text </p>`, is the idea of blocks or divisions. Using `<div></div>` we can surround a section of a web page, including headlines, horizontal rules, images, and text, and align all of them at once.

DIV Examples

```
<div align="left">... </div>
<div align="center">... </div>
<div align="right">... </div>
<div align="justify">... </div>
```

For more specifics, check W3C, World Wide Web Consortium (p. 225).

HTML style

As discussed, Style property declarations have the form "property: value" and if there are several options to be used, they are separated by a semi-colon. But because there are really too many possible properties (see page 276), styles are best done with an editor (see page 275).

For more specifics, check W3C, World Wide Web Consortium (p. 225).
<http://www.w3.org/Style/>

But in-line styles can **only** let us define what EACH instance of a tag can look like. Taken one step further, we could define these modifications just once (in the head), and then **reuse** these style modified tags throughout the page.

That is, in the example below, since we defined the H1 tag in the `style` section of the `head`, EVERYTIME we use `<H1>`, it will be green with a yellow background, and in the Arial font.

Adding this information to predefine styles is called a *style sheet*. First we start with the `<style></style>` tag set in the `head`, followed by a comment read only by browsers that understand *styles*.

Key among tags changed here are modifications on how the body behaves, instead of adding `text=`, `link=`, etc. to the `<body>`.

This commented area that sets the styles follows the format `selector {property: value}` (**without** quotation marks).

Again your editor probably can build a better stylesheet than you can manually (page 276), but below is an short sample.

Example Style sheet: to make any H1 green, Arial, with yellow background

```
<HEAD>
<TITLE>Style sheet example</TITLE>
<STYLE TYPE="text/css">
<!--
BODY {background: #FFFFCC;
margin-top: 20}

A:link {color: #300090;
background: #FFFFCC}

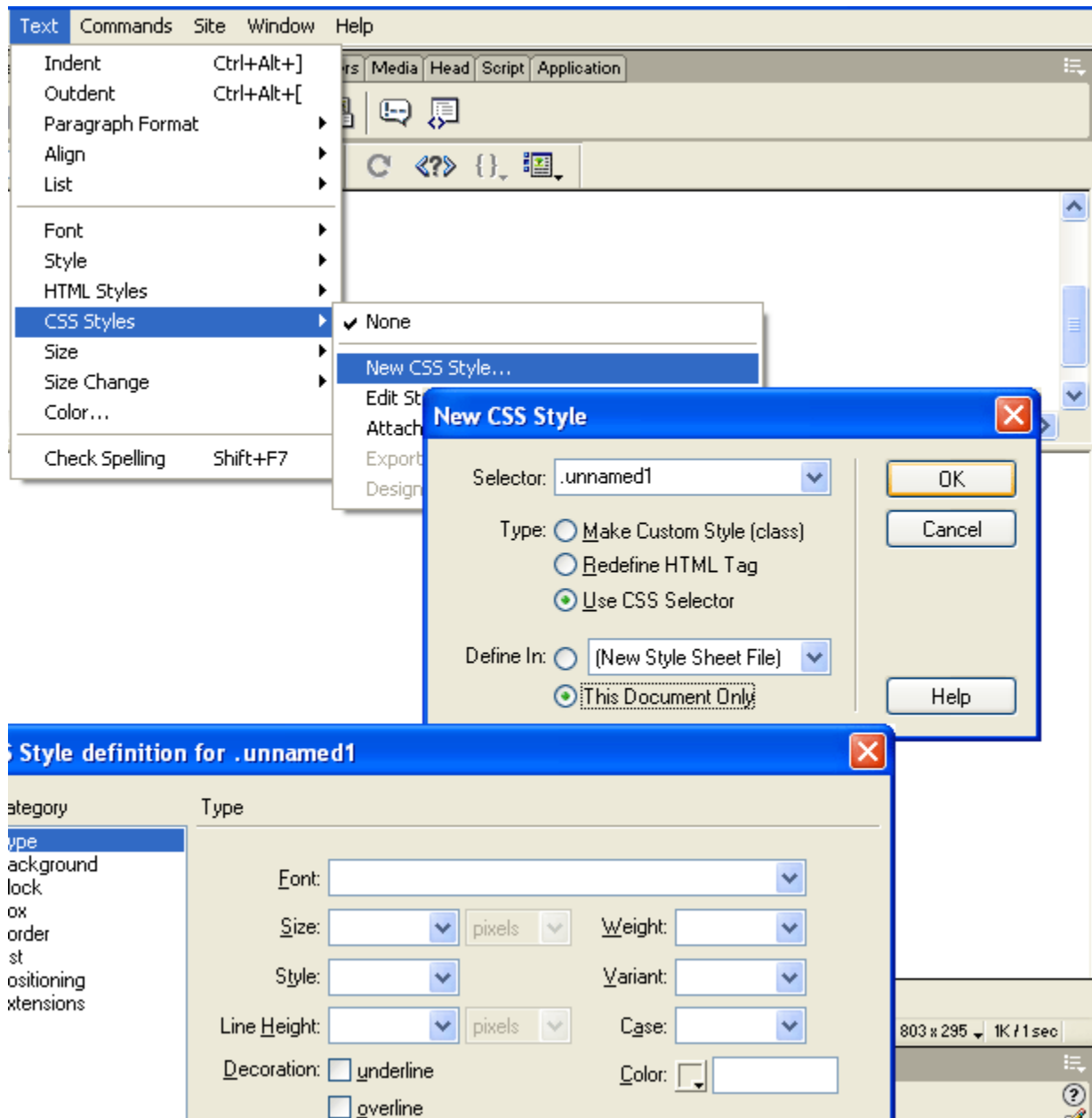
H1 {font-weight: bold;
text-align: center;
color: #006000;
background: #FFFFCC;
font-family: 'Helvetica', Arial, sans-serif}
-->
</STYLE>
</HEAD>
<body>

<h1>
This and every H1 will be a Headline size 1, but modified as described in the head
</h1>

</body>
</html>
```

Styles, using editors

Web Design II courses focus on using editors such as Dreamweaver, but below is a quick snapshot of where to find styles. You again create a new style for a stylesheet by naming it (the `selector`), then using a dialog box to define the property and value that would be hand coded as `selector {property: value}`. Later you while editing a web page, you'd highlight some text and select the style to apply to it, just as easily as in a word processor highlight text, then selecting [B] for bold.



Some style properties

Recall again stylesheets take the form `selector {property: value}`

A very good web site with details on style properties is at <http://www.eskimo.com/~bloo/indexdot/css/propindex/all.htm> which includes how to use the properties listed below.

Note: many properties, such as `background:`, have related properties, such as
`background-attachment:`
`background-color:`
`background-image:`
`background-position:`
`background-position-x:`
`background-position-y:`
`background-repeat:`

Stylesheet properties

`font:`
`height:`
`line-height:`
`list-style:`
`margin:`
`outline:`
`page:`
`page-break-after:`
`scrollbar-arrow-color:`
`scrollbar-base-color:`
`scrollbar-dark-shadow-color:`
`scrollbar-face-color:`
`scrollbar-highlight-color:`
`scrollbar-shadow-color:`
`scrollbar-3d-light-color:`
`scrollbar-track-color:`
`text-align:`
`text-indent:`
`width:`
`word-break:`
`word-spacing:`
`word-wrap:`

You may see now why it is best left up to editors to create styles.

For more specifics, check W3C, World Wide Web Consortium (p. 225).
<http://www.w3.org/Style/>

Instructor notes

Technically, Styles are not a part of this course, but I wanted to give you a jump start as the `font` tag is deprecated, and if you do any formatting in an editor, it is probably implementing that formatting with either an inline style, or more likely, a stylesheet. And now that we have access to html editors, it is fairly easy to use style sheets. Shortly we will also preview CSS, cascading style sheets, for you to use if you are so inclined.

OPTIONAL: ftp background knowledge

Reminder of previous references to ftp on pages 23 and 106.

IMPORTANT NOTE: YOU MAY SKIP THIS SECTION IF AND GO STRAIGHT TO '**ftp for the lab.**' But why would you do that?

FTP is aging, but still an irreplaceable tool. The reason it is studied for this class is no other tool set can reliably upload your web pages to a password protected server.

FTP, though, is not meant to manipulate the remote account. It is meant only to quickly access a remote resource, move files, and some basic housekeeping, such as creating folders or renaming files. Period. Not for the creation of new data, not for editing, and not for running executables; simply to support moving files from machine to machine.

Quick note on *downloading* with ftp: Many large files you click on to download from sites actually are delivered via ftp operating within your browser, since ftp is more robust at moving any files, either as an upload **or** as a download.

(If you were to use dedicated ftp software instead of your browser to download from a server that allows guest access, you would almost immediately be challenged for a password. Don't fear though, one unique feature of FTP is there is a standard username and password to use for anonymous guest account access.

The username *is* the unwieldy word *anonymous* [hence, the name anonymous ftp], and the password is the user's e-mail! Anonymous ftp is **only** for downloading; for uploading you must have an account controlled by a real username and real password.)

The ftp engines available that are the **most used** use are Windows Internet Explorer, Filezilla, the Windows FTP engine (*Type ftp* in the command prompt), or a free to try WS_FTP. Internet Explorer, Filezilla, and WS_FTP hide the command structure. With IE, it can be just like

browsing another folder on your computer. Filezilla and WS-FTP use two panes representing the two computers involved, with buttons that are labeled with the standard navigation commands

While all these tools have the ability to copy files, they are often limited in the fact that they can only give the user a list available files; there may be no preview or viewing mechanism for the new, complex audio, graphic or video formats. The final caveat for using FTP is the limited search engine support for finding files to copy.

Really Optional: ftp command line

(command line use of ftp is NOT required, see the following section, 'ftp for lab.')

Any command line ftp engine requires knowledge of FTP commands. So, the Windows ftp software is the tool of choice for those who are comfortable with command lines, and the control offered.

ftp commands

```
ftp> help
Commands may be abbreviated.  Commands are:

!           delete          literal          prompt
send
?           debug            ls              put
status
append     dir                 mdelete        pwd
trace
ascii     disconnect        mdir           quit
type
bell      get               mget          quote
user
binary    glob              mkdir          recv
verbose
bye       hash             mls           remotehelp
cd        help             mput          rename
close     lcd              open          rmdir

ftp>
```

Really optional: Sample command line ftp session

```
open studentweb.templejc.edu
```

(connects to a web server named studentweb, you will be prompted to fill in username and password)

```
mkdir pages
```

(makes a directory named pages)

```
mkdir images
```

(makes a directory named images)

```
lcd O:\lab9
```

(sets the local machine to your O:\lab9)

```
put index.html index.html
```

(uploads/copies your default document to the current (root) directory of your account on studentweb)

```
cd pages
```

(changes the directory to the pages directory of your account on studentweb)

```
lcd pages
```

(sets the local machine to your O:\lab9\pages)

```
mput *.htm *.htm
```

(copies any file whose name ends with .htm)

```
cd ..
```

```
cd images
```

(changes the directory to the images directory of your account on studentweb)

```
lcd ..
```

```
lcd images
```

(sets the local machine to your O:\lab9\images)

```
binary
```

(set the upload to non-text files. You need to know the difference between ASCII and Binary transfers. ASCII is a file you can read with notepad [such as web pages]. Everything else is Binary. The default is ASCII, you only change it when uploading images, etc.)

```
mput *.jpg *.jpg
```

(copies any file whose name ends with .jpg)

```
mput *.gif *.gif
```

(copies any file whose name ends with .jpg)

```
bye
```

(ends the session)

ftp for the lab

FTP is aging, but still an irreplaceable tool. The reason it is studied for this class is no other tool set can reliably upload your web pages to a password protected server.

FTP, though, is not meant to manipulate the remote account. It is meant only to quickly access a remote resource, move files, and some basic housekeeping, such as creating folders or renaming files. Period. Not for the creation of new data, not for editing, and not for running executables; simply to support moving files from machine to machine.

Note: ftp is only used to upload files. Not to edit or change files, or to view files.

Note: To change files, edit your local copy, *delete* the original file on the server, then upload the new version.

Note: To view the files, use your web browser, not the ftp system.

Web Page Design I Student 01 (wd1std01)
thru
Web Page Design I Student 80 (wd1std80)
have an account on studentweb.templejc.edu.

Your instructor will assign you a two digit number.

The **username** at the ftp login is wd1-**, where you substitute *your* assigned student number, such as wd1-25

The **password** is wd1**, where you substitute your assigned student number, such as wd125

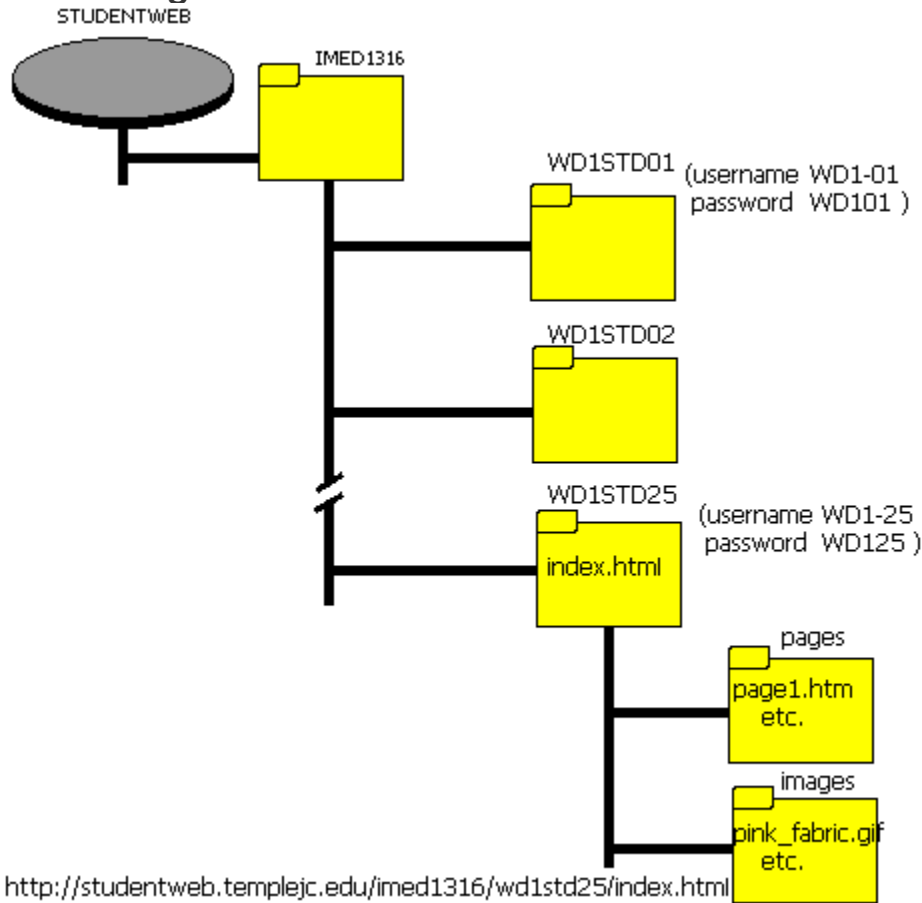
After logging in, you are automatically placed in **your** folder (no need to navigate the studentweb server), where you can upload a default document, such as index.html, plus folders and files you have created.

When finished, to view the pages you have placed on the server you would direct your web browser to

<http://studentweb.templejc.edu/imed1316/wd1stdxx>
(substitute **xx** with **your assigned** number)

Example, to go to the instructor's site, go to
<http://studentweb.templejc.edu/imed1316/wd1std25/>
to view the default document.

Visualizing the studentweb server



Note: '\' is DOS, '/' is Internet

When finished uploading with fpt, to view the pages you have placed on the server you would direct your web browser to

<http://studentweb.templejc.edu/imed1316/wd1stdxx>
(substitute **xx** with **your assigned** number)

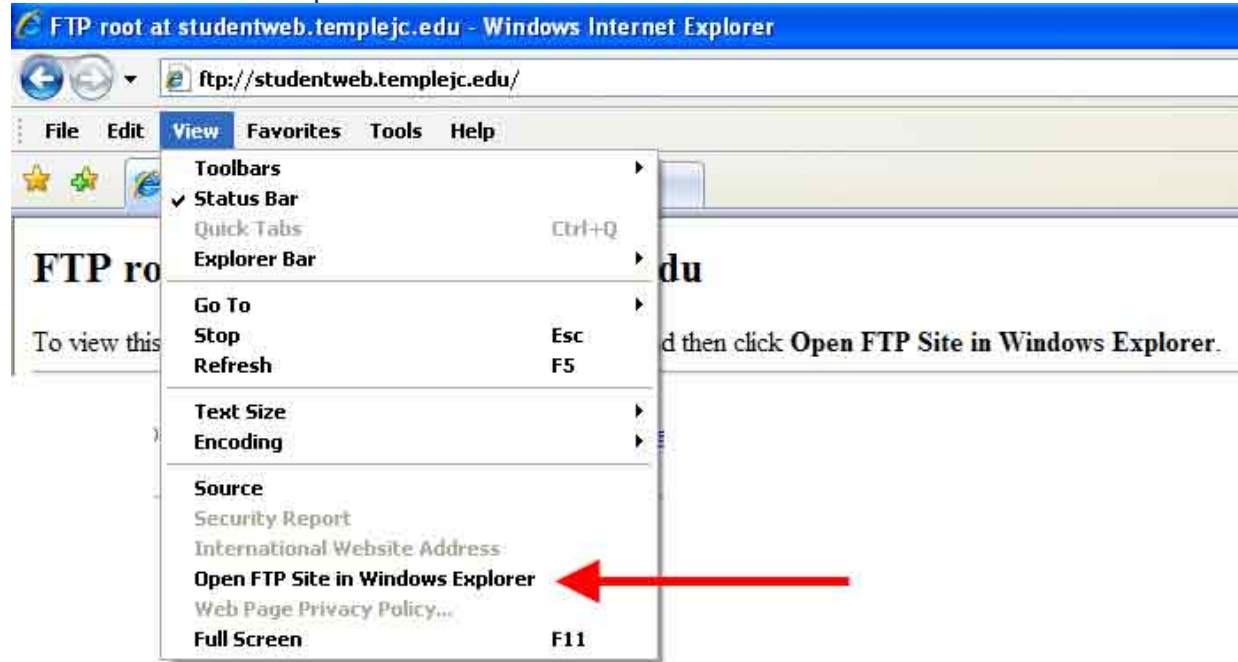
To view the instructor's sample, go to
<http://studentweb.templejc.edu/imed1316/wd1std25>

Since there **is** a default document named index.html, you do not need to specify the filename.

Below are sample instructions to use YOUR account information to log in and upload files, using IE, Filezilla (free), and WSFTP. YOU CANNOT USE FIREFOX for uploading ftp without adding additional software.

ftp using Internet Explorer

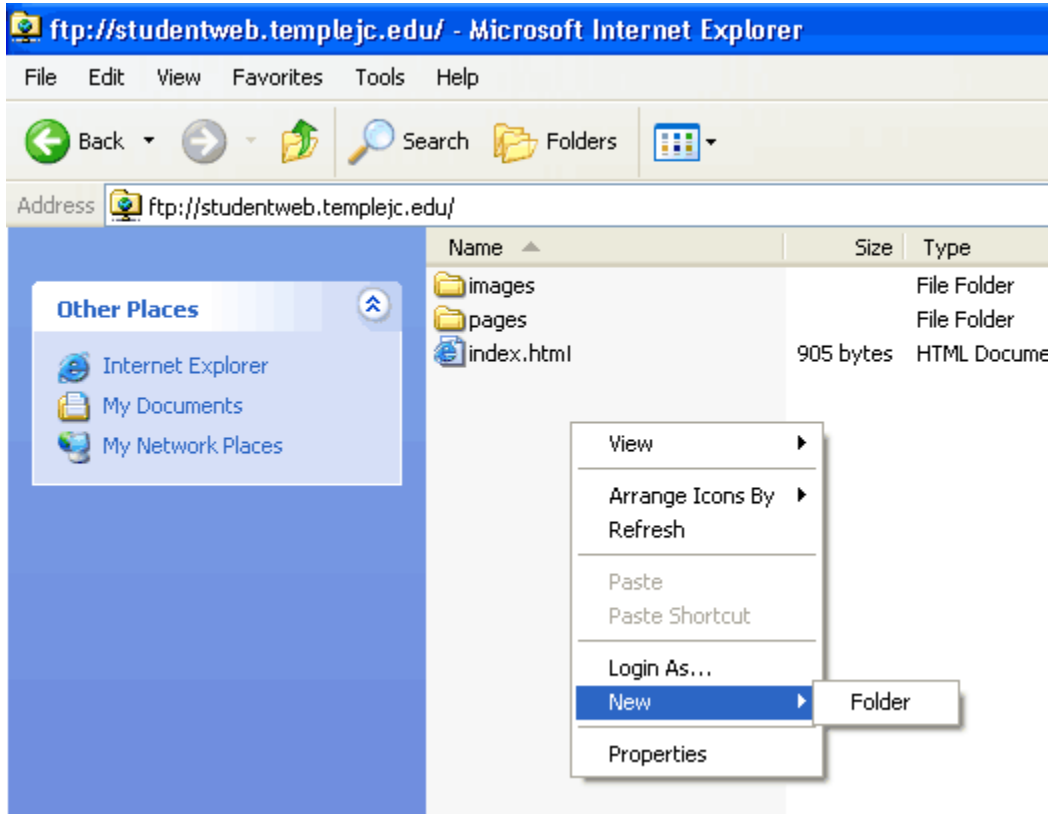
Type in the following URL in your browser: ftp://studentweb.templejc.edu
When prompted, choose [Alt]+View (**not Page**), then choose Open FTP site in Windows Explorer



The log in screen will appear
Enter the user name and password provided by the instructor



You may now right click the browser window and create folders, as needed.

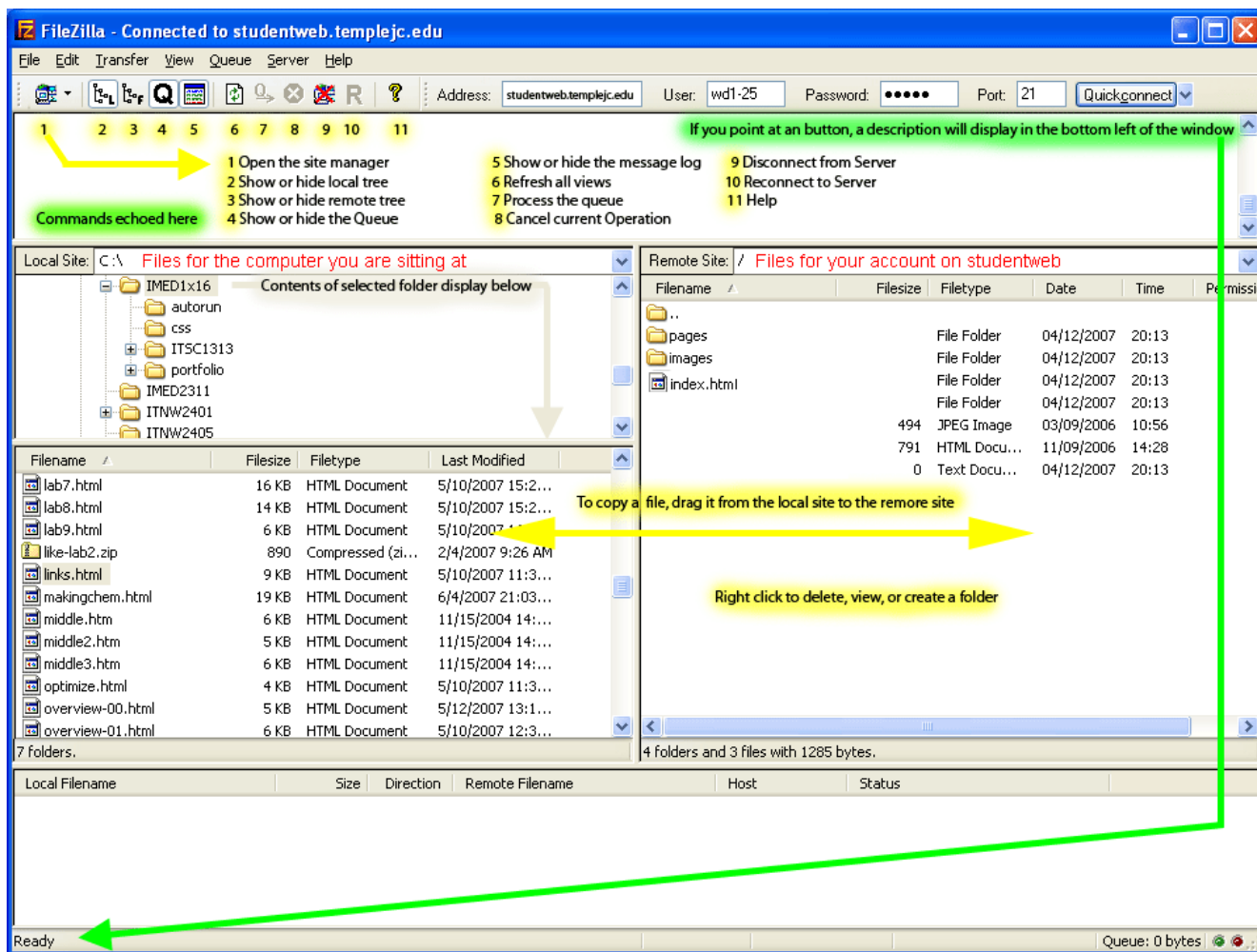


NOTE: DO NOT COPY YOUR LAB9 folder...
open the lab9 folder, and copy the contents only...
...such as index.html, the pages folder, and the images folder.
See screen shot below for what you should see when finished.

IMPORTANT, you CANNOT replace existing files on the server... they must be deleted, then re-uploaded.

ftp using filezilla (if not on your computer, download from <http://sourceforge.net/projects/filezilla/#>)

type in the following URL in your browser: ftp://studentweb.templejc.edu
Enter your username and password, as described above, then hit [Enter].
Right click remote site pane to create folders, as needed
Set local directory in left pane, as needed
Drag files to remote site.



NOTE: DO NOT COPY YOUR LAB9 folder...
open the lab9 folder, and copy the contents only...
...such as index.html, the pages folder, and the images folder.
See screen shot below for what you should see when finished.

IMPORTANT, you CANNOT replace existing files on the server... they must be deleted, then re-uploaded.

ftp using wsftp, see class website.

ftp using Firefox, see class website.

Lab 9

General Lab Directions

Note: There is not enough time in lecture to cover all the material; read your book BEFORE you begin the lab

Note: Typically labs will require you to invest some time in the lab, outside of class lecture hours

Check with your Instructor for due date, typically Friday, 11:59PM (see due dates on web site)

Activity (100%):

- Upload to the studentweb server (see previous section) a default document (index.html) that opens at least one file stored in a pages folder, with links back to index, and at least one image saved in a images folder.

- Include a document that lists *your* studentweb URL in the dropbox

DO NOT SIMPLY UPLOAD YOUR LAB 9 FOLDER

Upload index.html,
create a folder called pages,
create a folder called images,
then upload your pages folder contents
then upload your images folder contents.

If you cannot not access an studentweb.templejc.edu, contact me for alternative solutions (Primarily dual credit students)

Acceptable default documents vary by server.
UNIX servers typically prefer index.html
Windows server typically prefer index.htm (no L at the end) or default.htm (no L at the end).

For this lab, you **must** name your default document index.html

You may reuse existing pages as long as everything works (you may have to add links form page1.htm/page2.htm to index.html),

or

create new web pages (perhaps using styles, or perhaps use all or portions of your lab 10, if you have been working ahead).

- Copy any relevant sections of lab8 to a lab9 folder, and test that everything works.

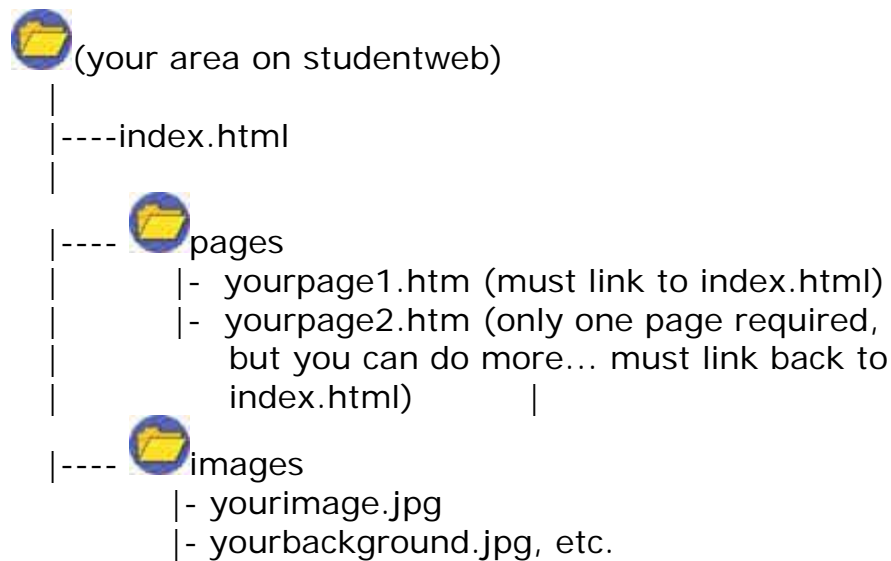
DO NOT SIMPLY UPLOAD YOUR LAB 9 FOLDER

The lab9 folder is only for organization on **your** computer... upload **only the contents** of the lab9 folder

- **Details**

On studentweb, create the required folders, and upload your files and to your area of studentweb

 \ (studentweb)



Grading Points

(10 points) default document (index.html) links to another web page, stored in the pages folder.

(10 points) the other web page links to default document

(10 points) at least one of these documents has an image

(10 points) all pages properly coded, with titles, background colors/images, control of text color

(50 points) all pages properly uploaded, and visible when URL followed (index.html correctly named, in root directory)

(10 points) deliver to me a document that tells me the URL to your default document.

You may create a web page, a text document, or a word document to place in the dropbox with that information

Note: if you upload files with errors, you must delete those files on the server, fix them on your disk, and then upload them again. Most ftp servers will not let you over-write or edit files.

SUBMITTING THE LAB

Log into Desire2Learn, choose this class, choose Dropbox, select Lab 9. Browse to the document with *your* studentweb URL, and upload it. (See page 70 or class website for detailed instructions)

Completing Overview 12

- Submit by 11:59 pm, Friday, of the current week (see due dates on course web site)
 - Lab 9

MUD 12 (My Understanding, Details)

Respond in the class D2L Discussion forum to the following:

What topics, if any, during this time frame do you feel very comfortable with? Why?

What topics, if any, during this time frame do you not feel comfortable with?

- Participation Discussion 12 Respond in the class D2L Discussion forum to the following:
Why might we need to use ftp to upload files?

For the next time frame:

- Read Overview 13
- Each test has a review; you may wish to write out pertinent information from the readings and activities
- After completing this overview, you may wish to preview Lab 10