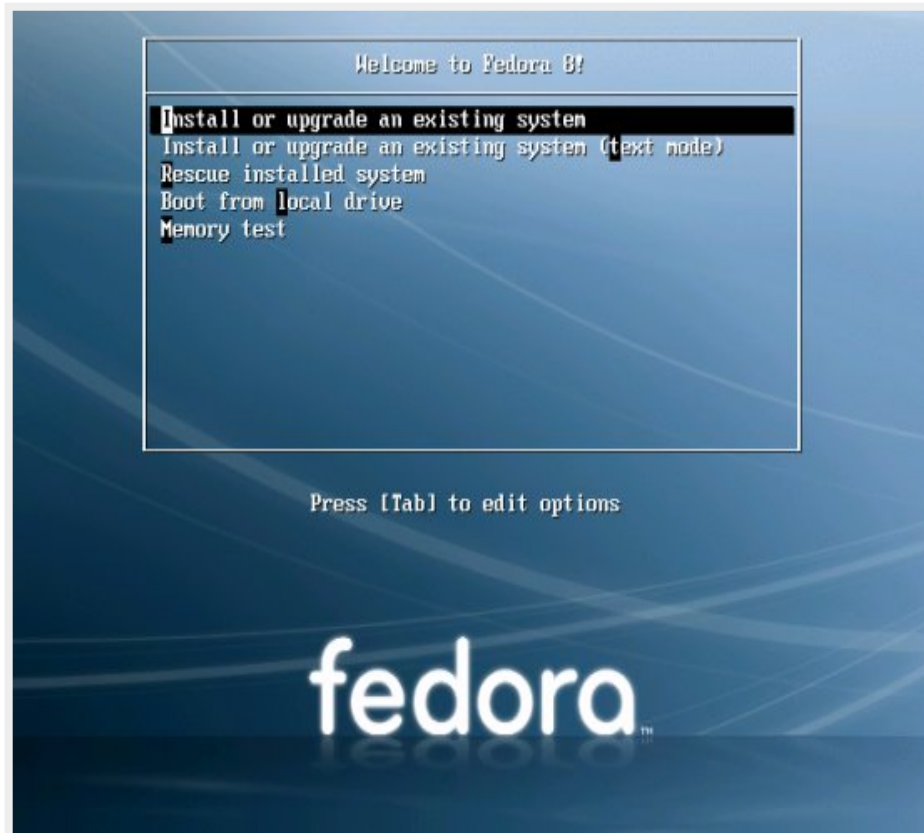


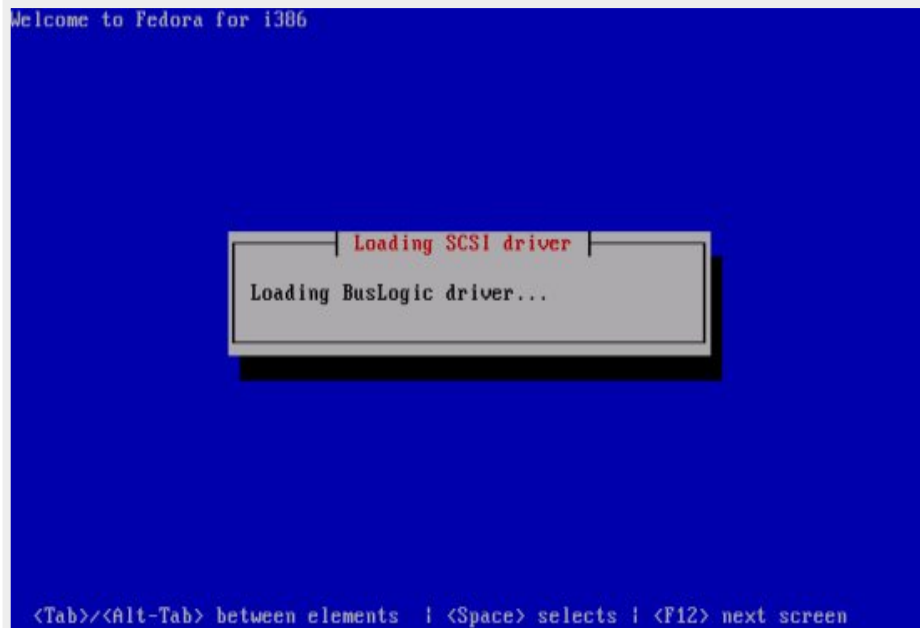
The downloadable image or installer of Fedora Core 8 is available at <http://fedoraproject.org/get-fedora>

(In my case I've used the DVD image during installation.)

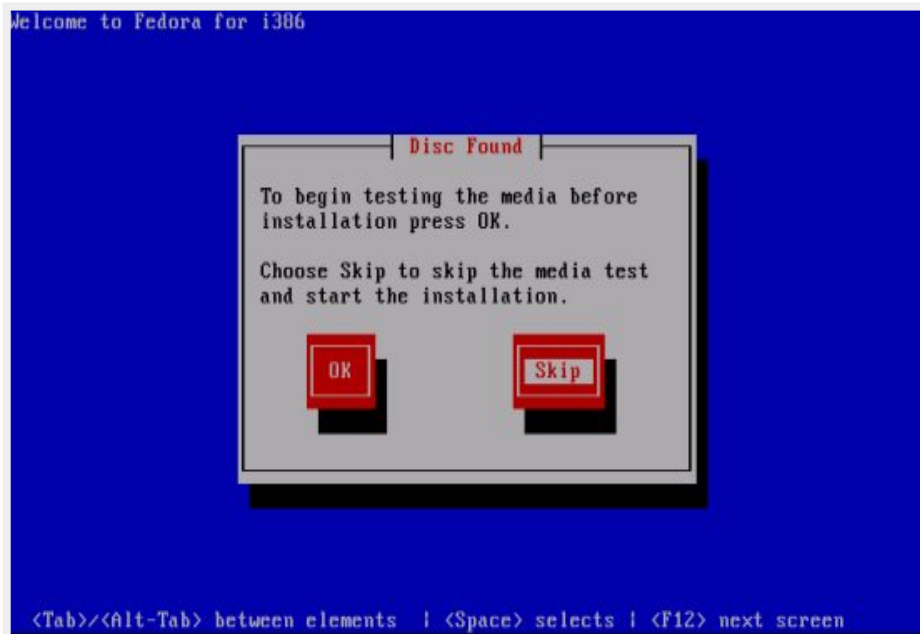
1. Boot to CD and press "**Enter**" to start fedora core 8 installation



Drivers are being loaded



press "Skip" to continue



press "Next" to continue



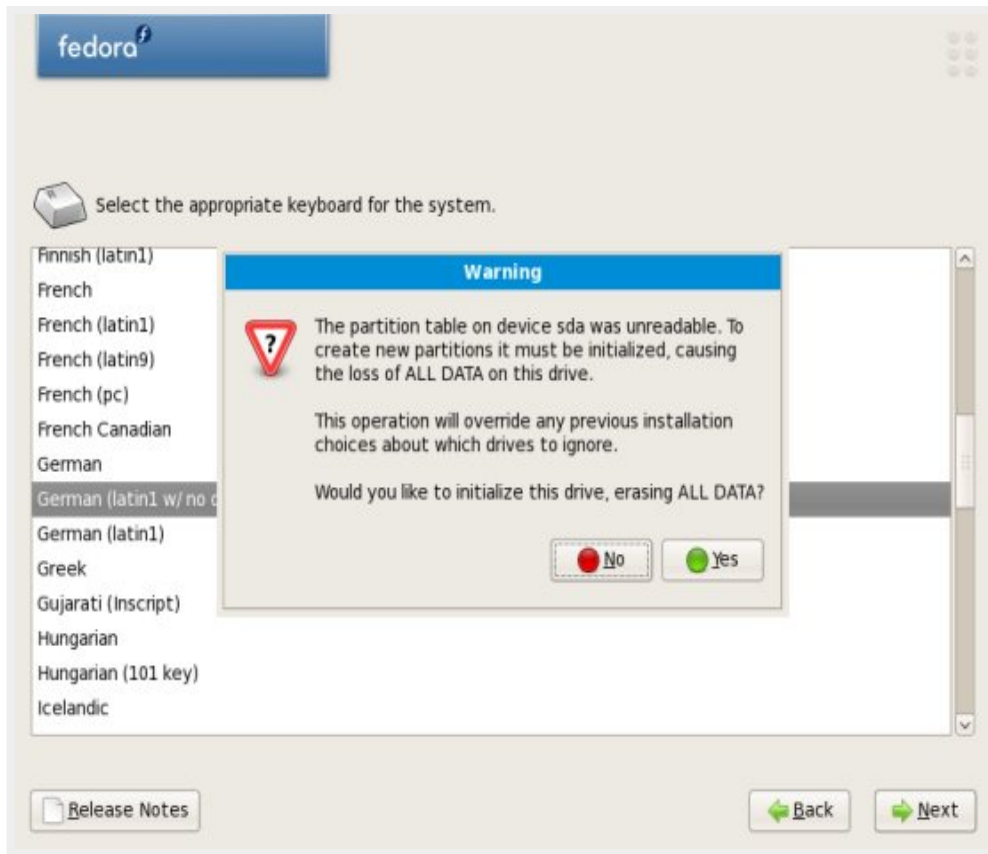
2. Select Language and then **Next**



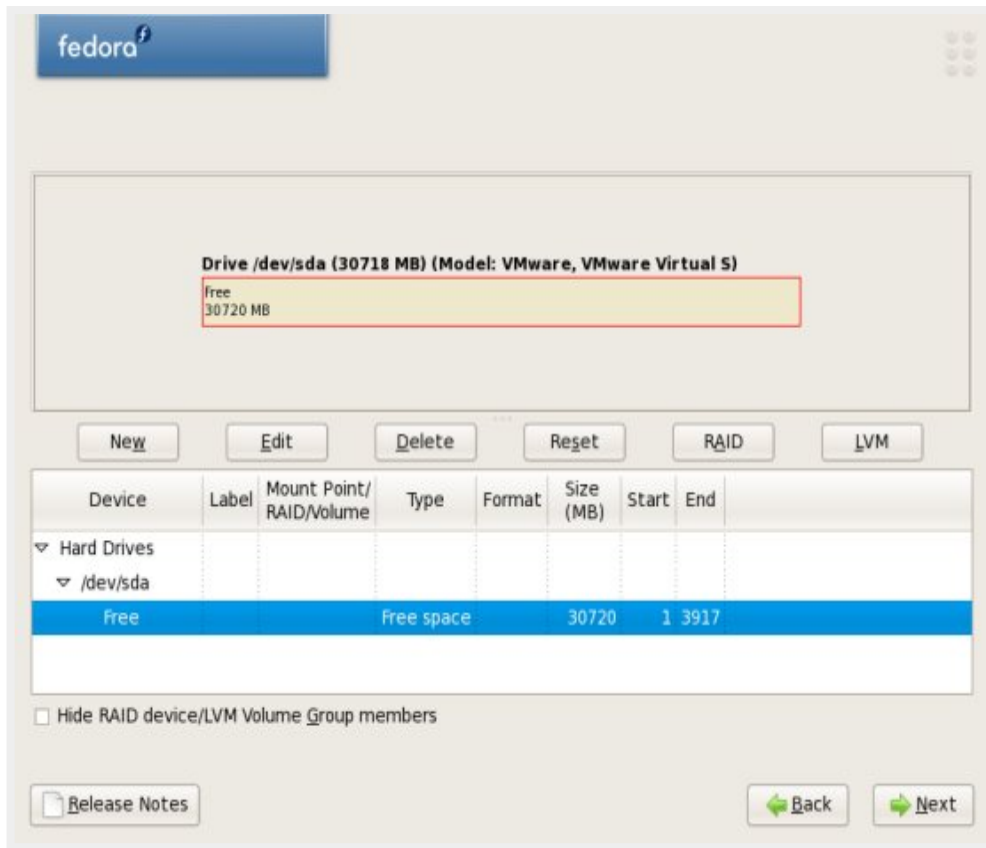
3. Choose your keyboard-layout and proceed.



4. A "Warning" will pop if you have unformatted disk, click "Yes".



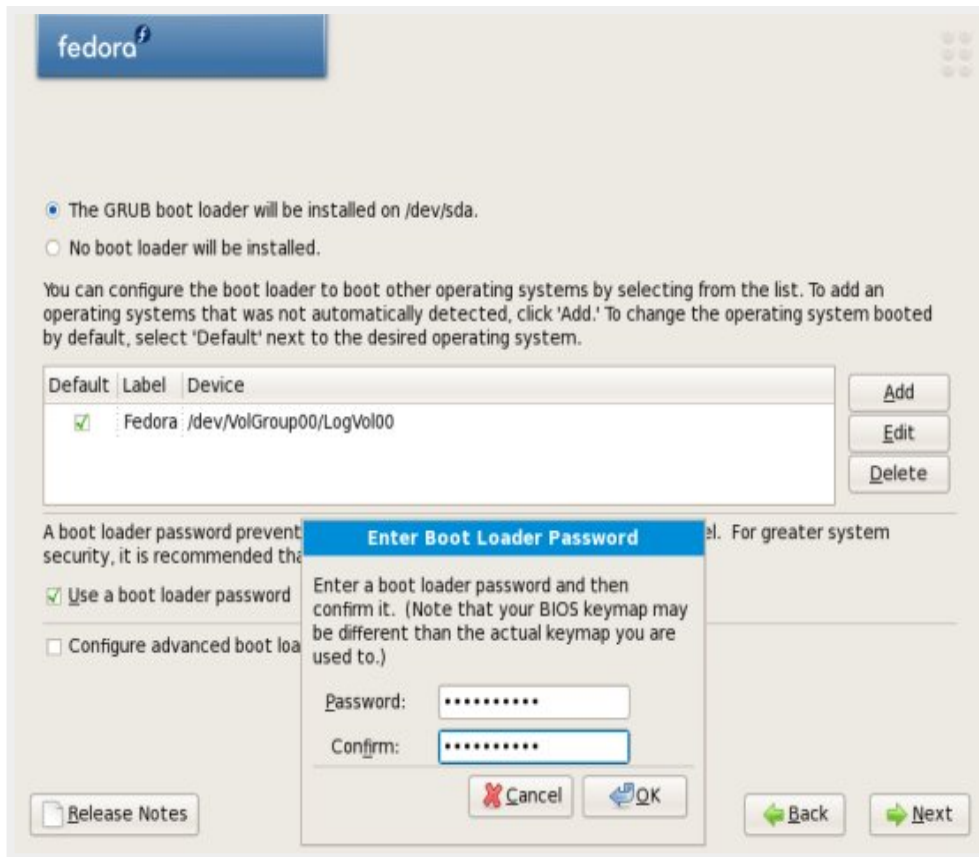
5. Select/Edit Partitioning layout.



(Choose Manual setup) ( to maximized disk allocation, refer below) :

- **/boot = 100**
- **swap = double the size of your physical memory**
- **/home = 1500**
- **/ = remaining free space**

6. Boot LoaderOption



By selecting this, you can prevent users from changing options passed to the kernel upon bootup. You may choose to provide password or leave it as it is.

## 7. Network Settings

**fedora**

**Network Devices**

Active on Boot	Device	IPv4/Netmask	IPv6/Prefix
<input checked="" type="checkbox"/>	eth0	DHCP	Auto

[Edit](#)

**Hostname**

Set the hostname:

automatically via DHCP

manually  (e.g., host.domain.com)

**Miscellaneous Settings**

Gateway:

Primary DNS:

Secondary DNS:

[Release Notes](#) [Back](#) [Next](#)



8. Select Location. Unmark the checkbox if there are other operating systems installed, that expects the clock to be set to local time - e.g. Windows.

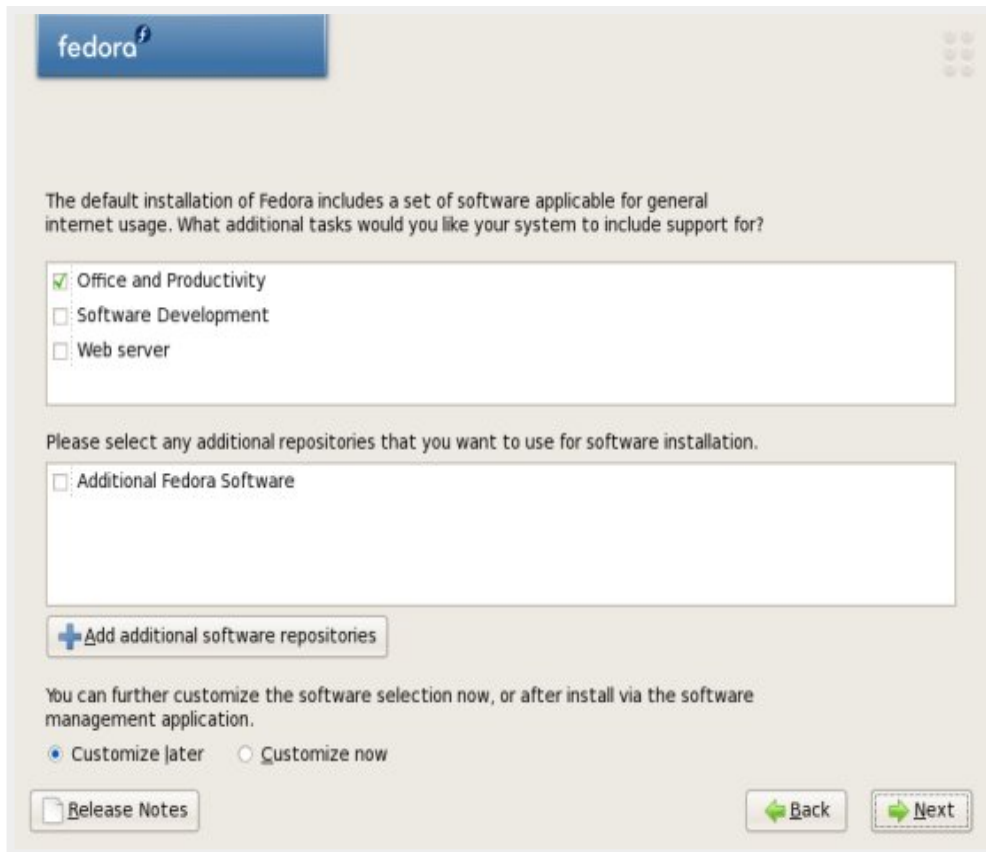


9.

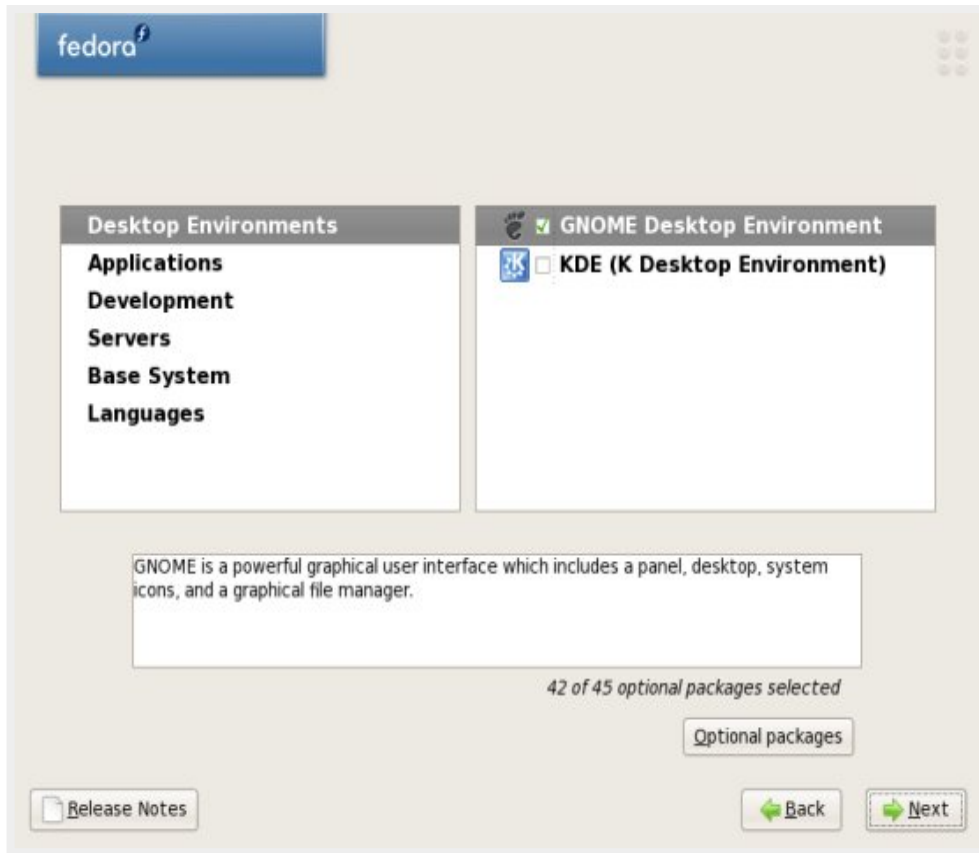
Choose a password for the root-account and confirm it.



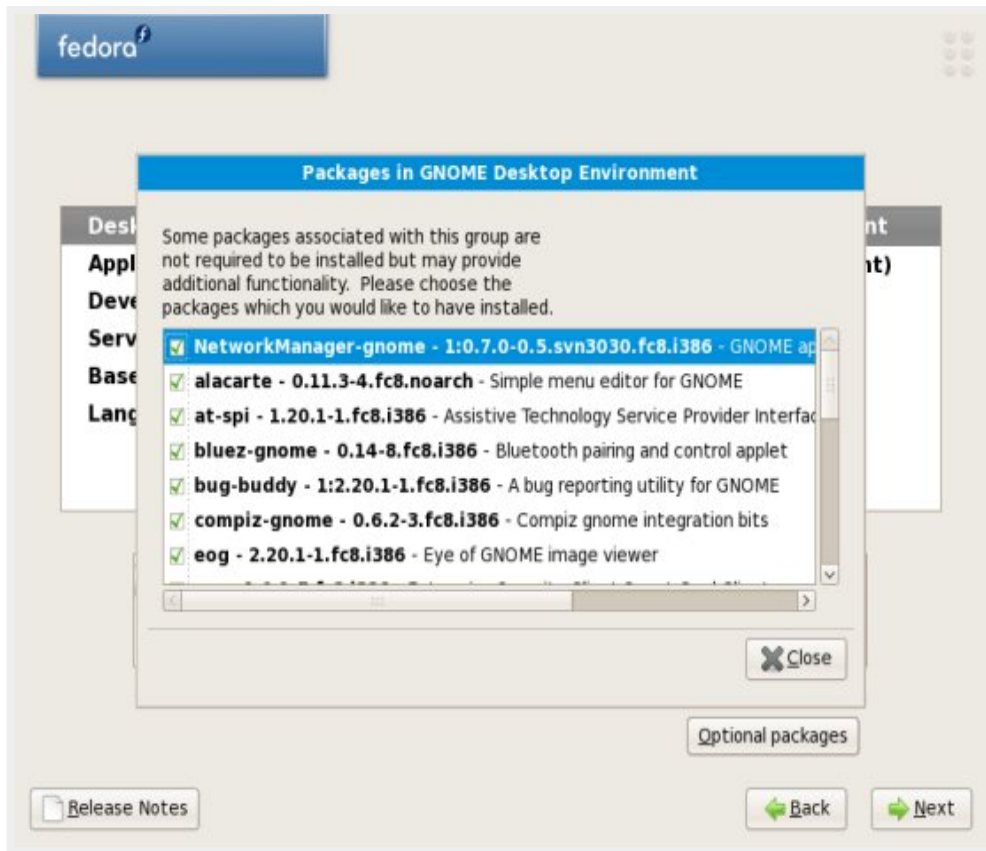
10. Customize software installation.



If you chose to customized the selection. Select a main group on the left and one of its subgroups on the right. Now click on "Optional Packages".



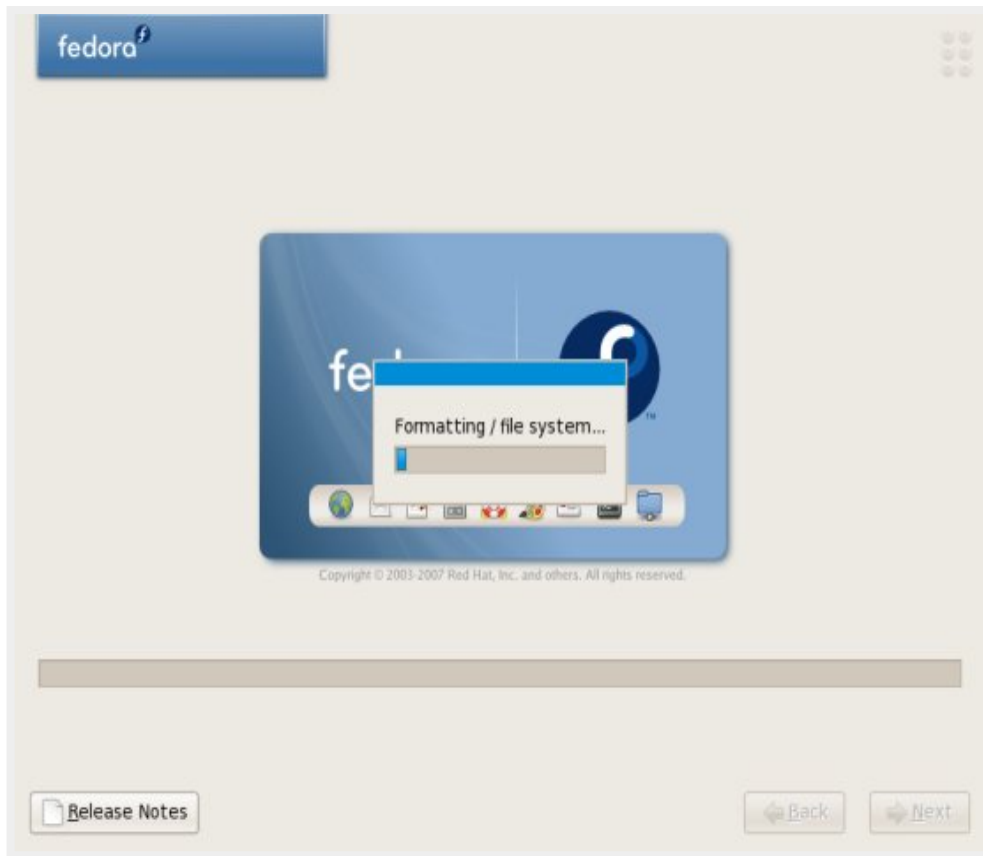
One can mark/unmark packages to be installed.



Click "Next" to proceed installation.11. The system is ready to install - click on "Next".



The partition(s)/disk(s) are being formatted.



The system is being installed.



The fedora core 8 installation is **complete**.

Remove the install media and reboot the system.

