

Setup of Helix Mobile Server (64-bit)



Please enter a username and password that you will use to access the web-based Helix Mobile Server Administrator, monitor, and live encoders. Administrator requests will be accepted on the (random) port shown using http://

Username: Administrator

Password:

Confirm Password:

Admin Port: 22543

Secure Port: 23288

Cancel < Back Next >

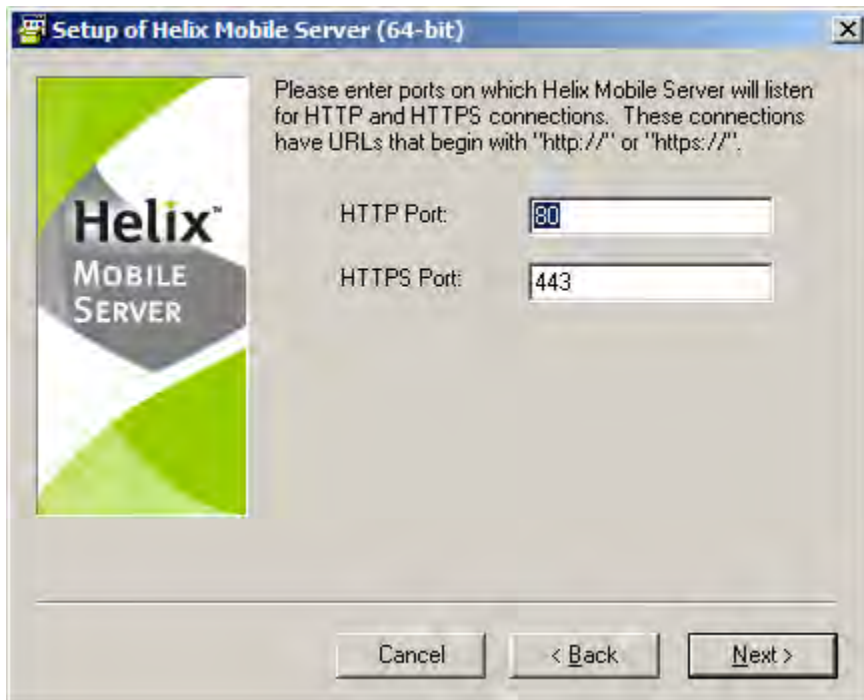
Password2

Setup of Helix Mobile Server (64-bit)



Please enter a port on which Helix Mobile Server will listen for RTSP connections. These connections have URLs that begin with "rtsp://"

Cancel < Back Next >



Setup of Helix Mobile Server (64-bit)



Please enter information which will be used to generate certificate files for secure connections such as HTTPS.

Country Code: (2 letter code)

State/Province:

Locality (city):

Organization:


Org. Unit:

Common Name:

Contact E-Mail:

CSR Name:

Setup of Helix Mobile Server (64-bit)



Please enter ports on which Helix Mobile Server will listen for FCS, SSPL and/or Content Management connections. These connections have URLs that begin with "http://" or "https://", depending on whether the Enable Control Port Security option is selected below. The availability of these ports will depend on your license.

FCS Port:

SSPL Port:

Content Mgmt Port:

Enable Control Port Security



