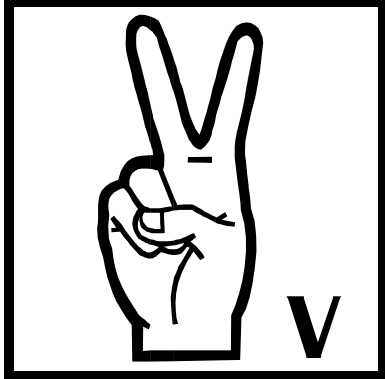




TEMPLE COLLEGE



Conversational Sign Language

This is an introductory class to sign language, finger spelling, and numbers. It will provide the student the opportunity to have a broad knowledge of basic traditional signs used by deaf persons in America today. Student will develop basic conversational skills through practice designed to improve communication with clients and coworkers who are hearing impaired.

Tuesdays & Thursdays, June 9 - August 10

6pm-8pm

\$97

Easy Ways to Register:

By phone: with your credit card call the Community Education Office at (254) 298-8616 & 298-8625

In Person: Temple College Downtown Center, 101 N. Main St. (corner of Adams & Main St) Monday through Thursday 8AM-5:30PM & Fridays 8AM-Noon

By Mail: Mail your check or money order along with a completed registration form to: Community Education, Temple College, 2600 South First Street, Temple, TX 76504-7435

Via Internet: Register at www.templejc.edu

Temple College does not discriminate on the basis of gender, disability, race, color, age, religion, national origin, or veteran status.
