

Board of Trustees

Constituents of the Taxing District and Service Area

Board of Trustees

Jack W. Jones
Chair of the Board of
Trustees

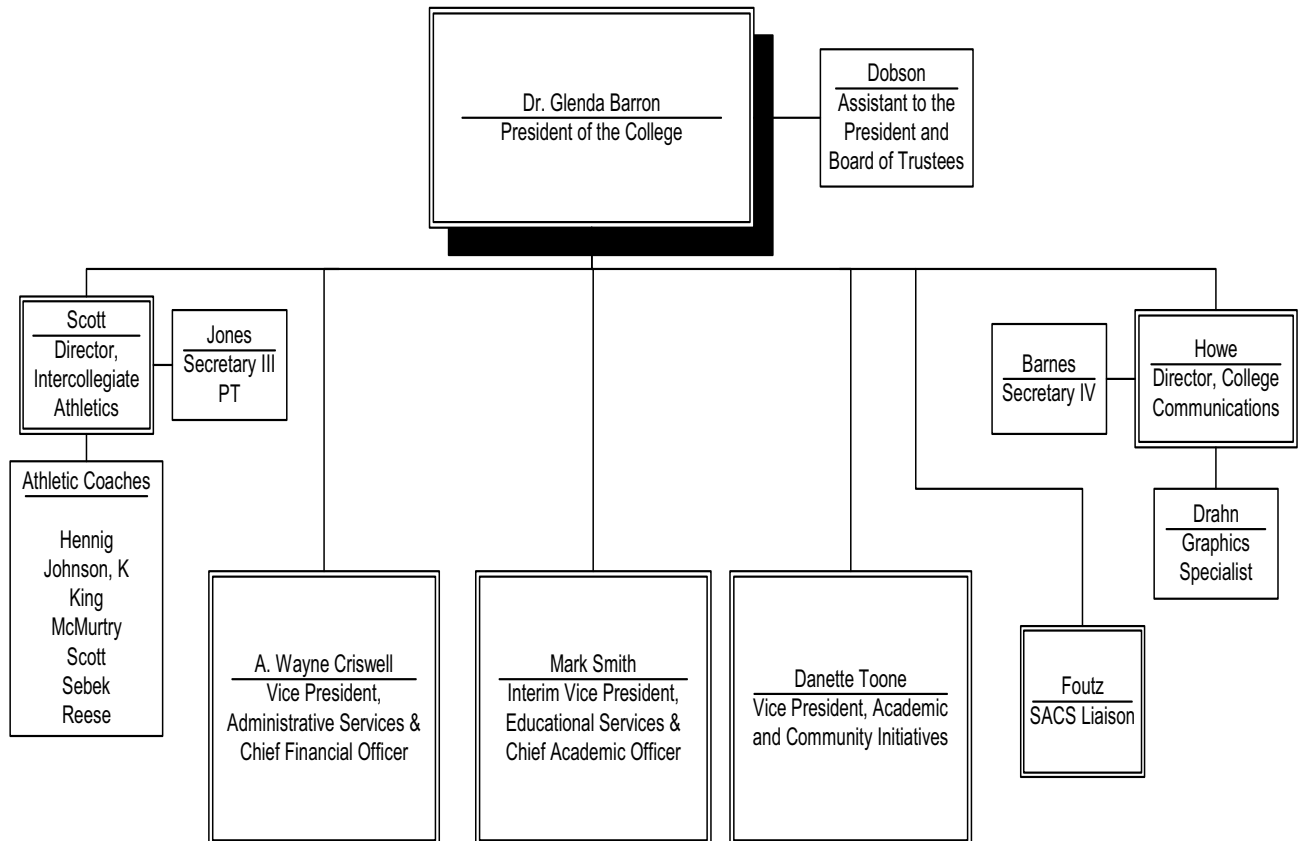
Walter P. Dyck
Vice-Chair

Judy Morales
Secretary

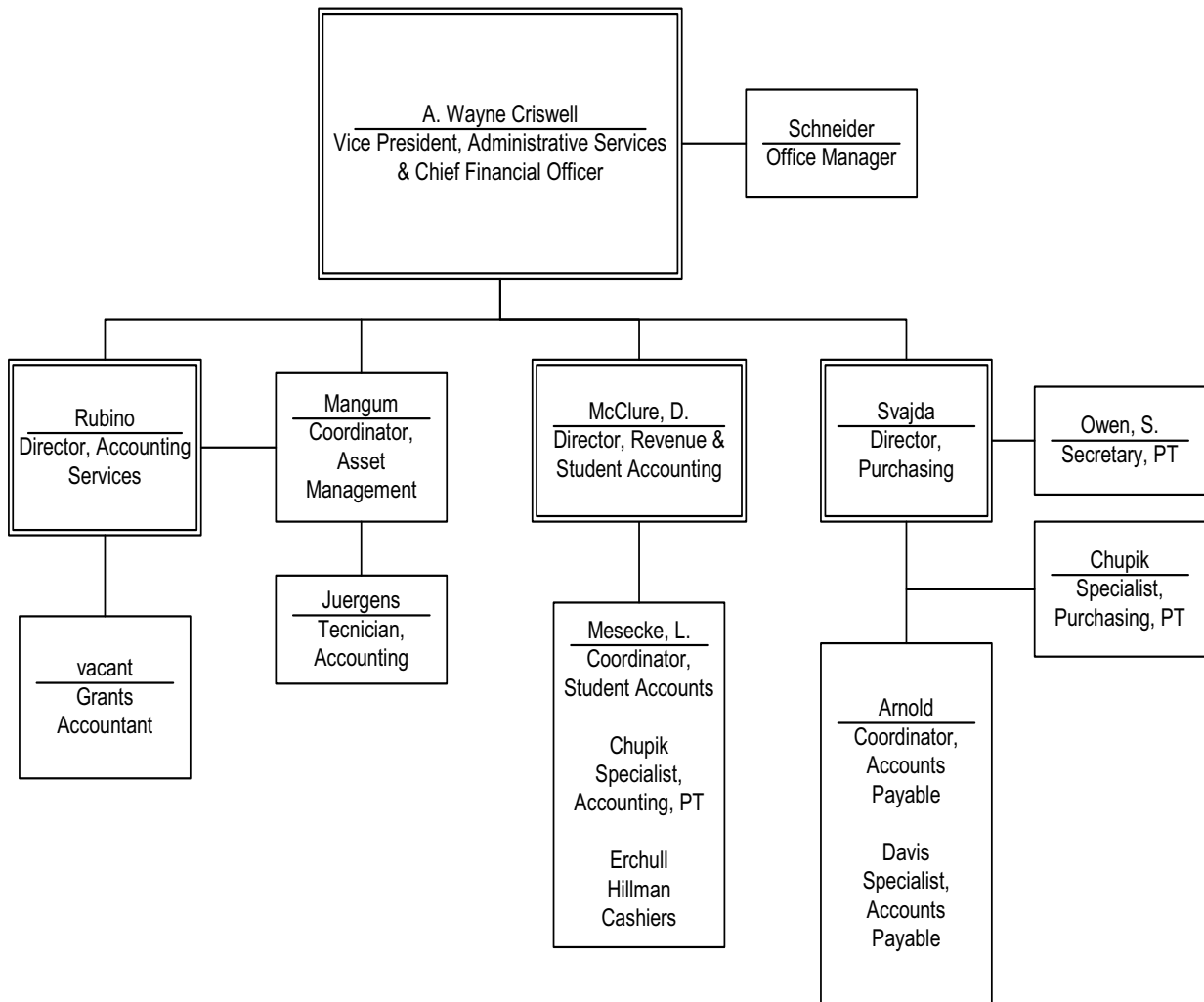
Members

Paxton Howard Jr.
Anne Penney Newton
Stephen H. Niemeier
Lydia Santibanez
Michael W. Thompson
Larry J. Wilkerson

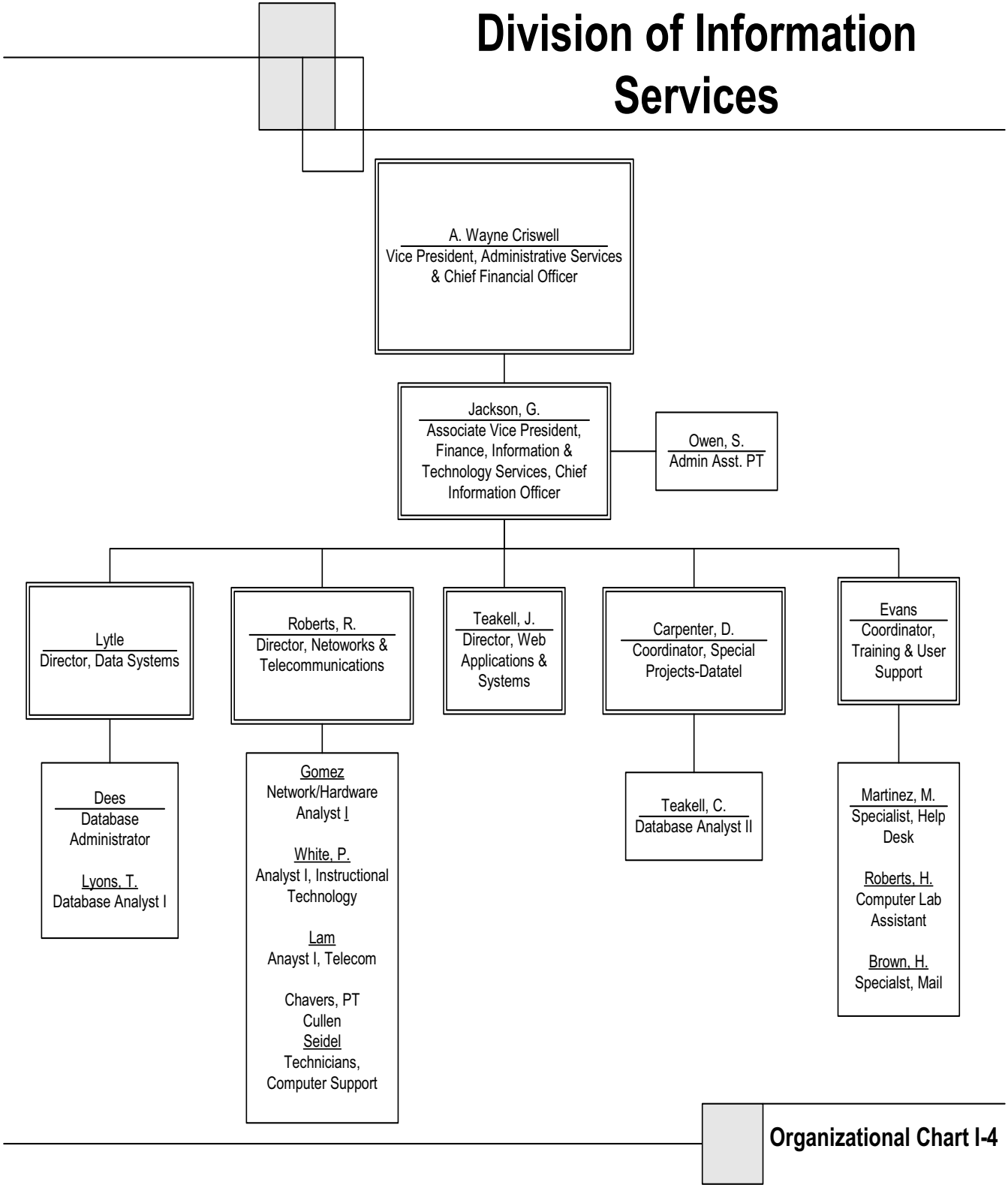
President's Office



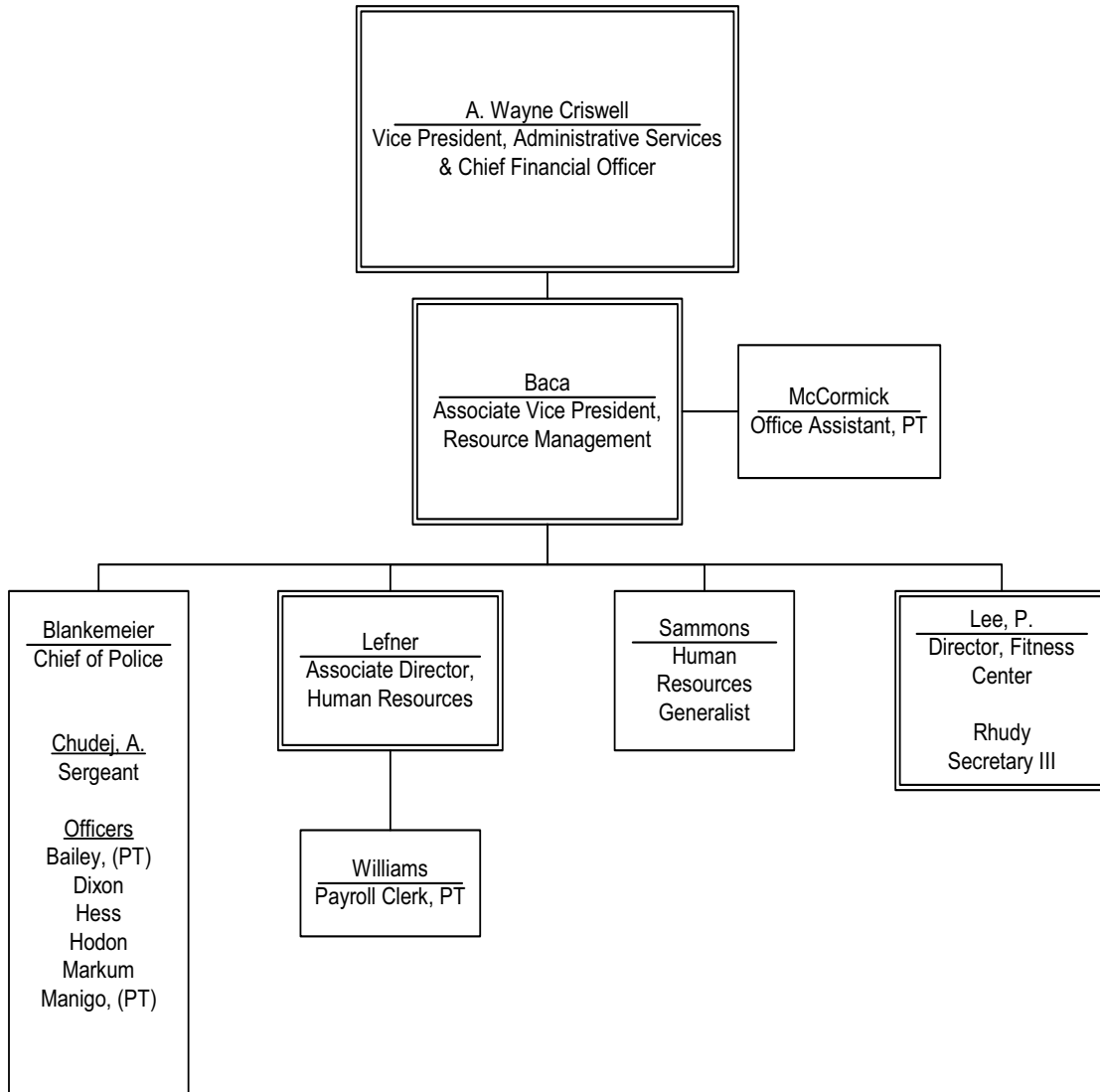
Administrative Services



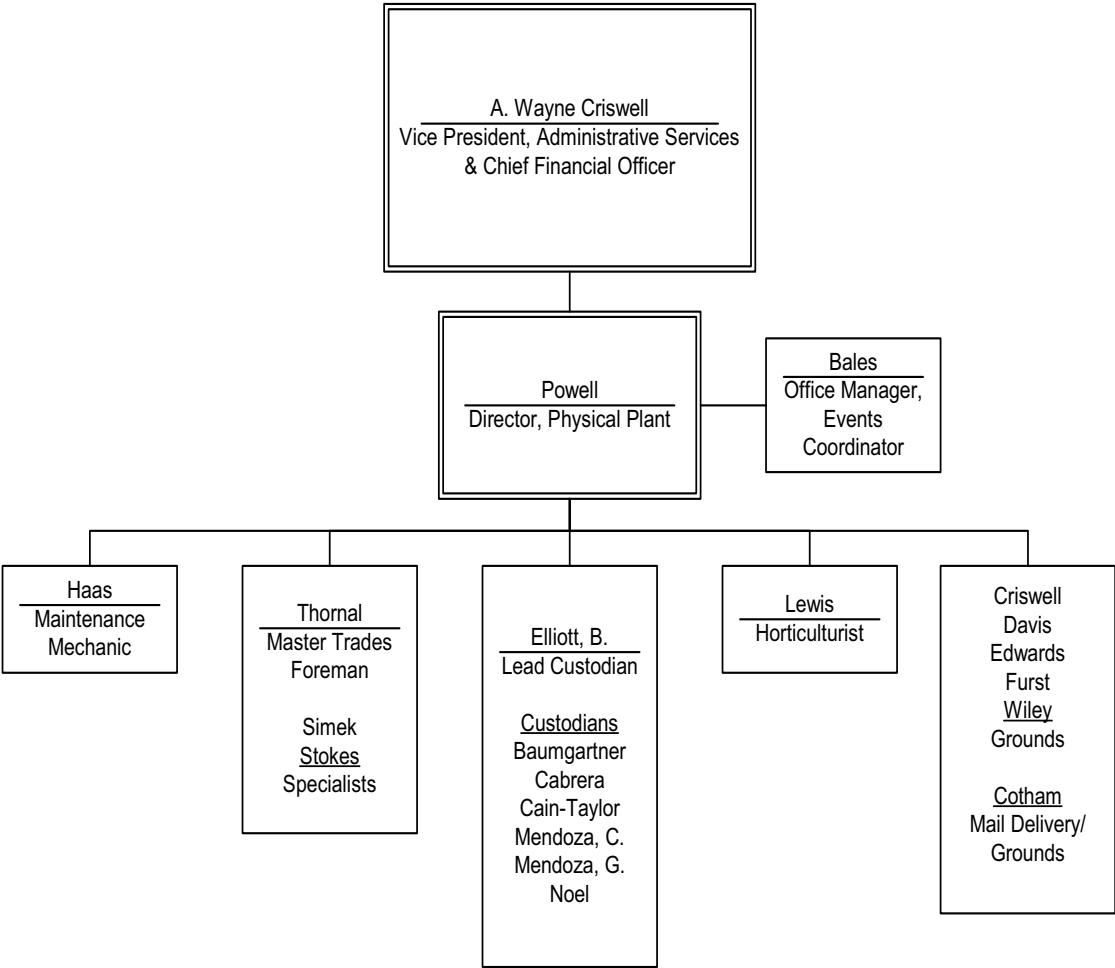
Division of Information Services



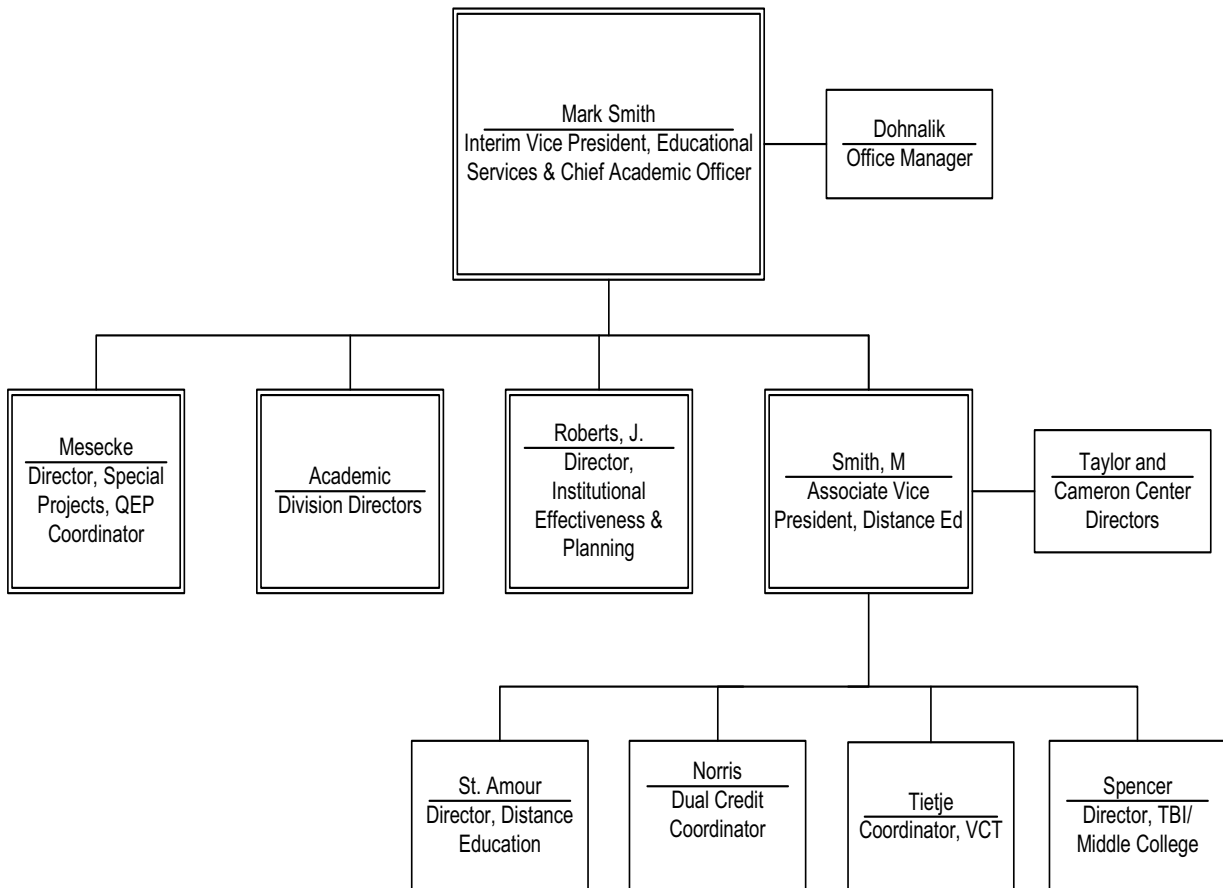
Division of Resource Management



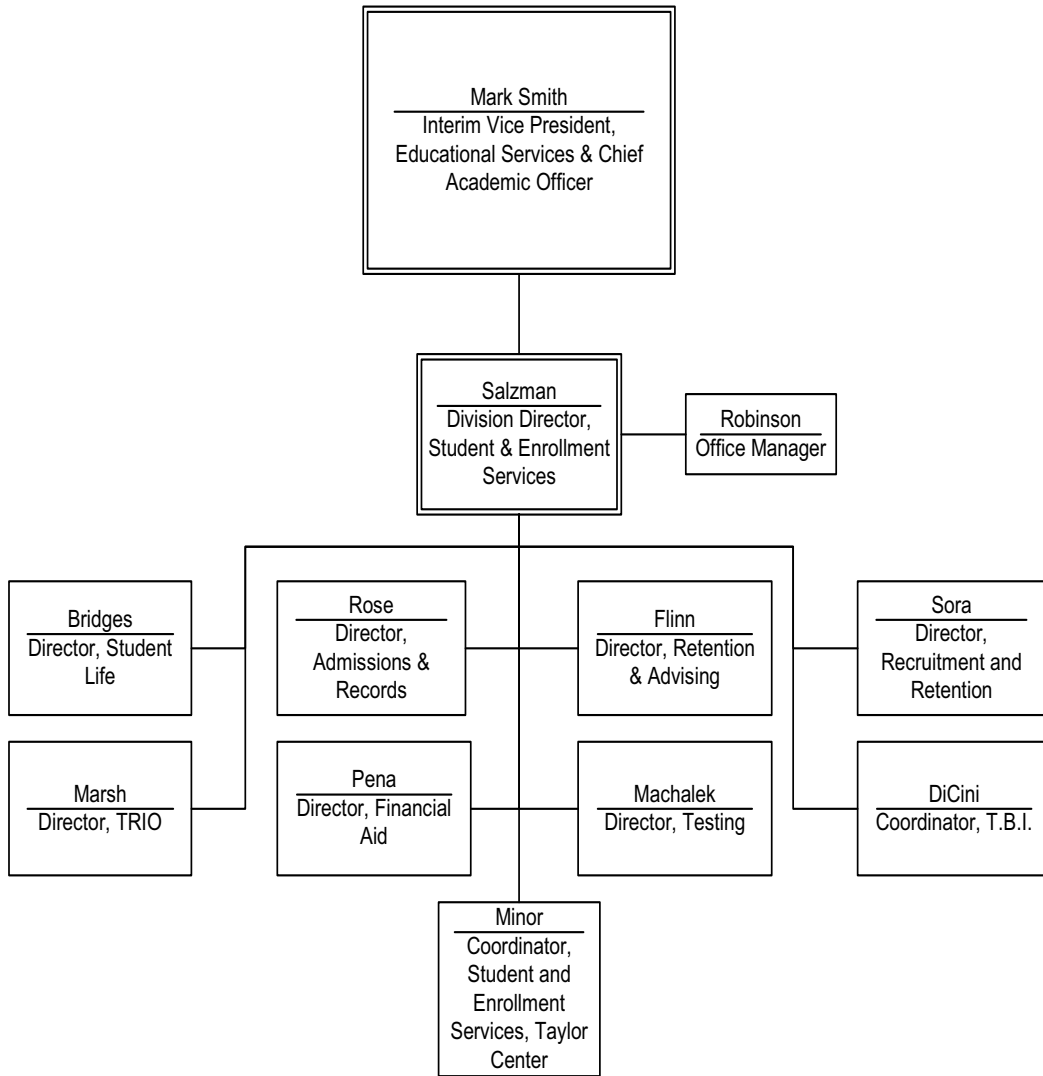
Physical Plant



Educational Services



Division of Student and Enrollment Services



Admissions and Records

Mark Smith
Interim Vice President, Educational
Services & Chief Academic Officer

Salzman
Division Director, Student &
Enrollment Services

Rose
Director,
Admissions &
Records

Cuellar
Associate
Director,
Admissions &
Records

Technician
Ditto

Specialists
Artus
Ashburn
Hanaway
Olivarri
McBride
Wright

Records
Management
Bradley

Financial Aid

Mark Smith
Interim Vice President, Educational
Services & Chief Academic Officer

Salzman
Division Director, Student &
Enrollment Services

Pena
Director, Financial
Aid

Warfield
Office Assistant

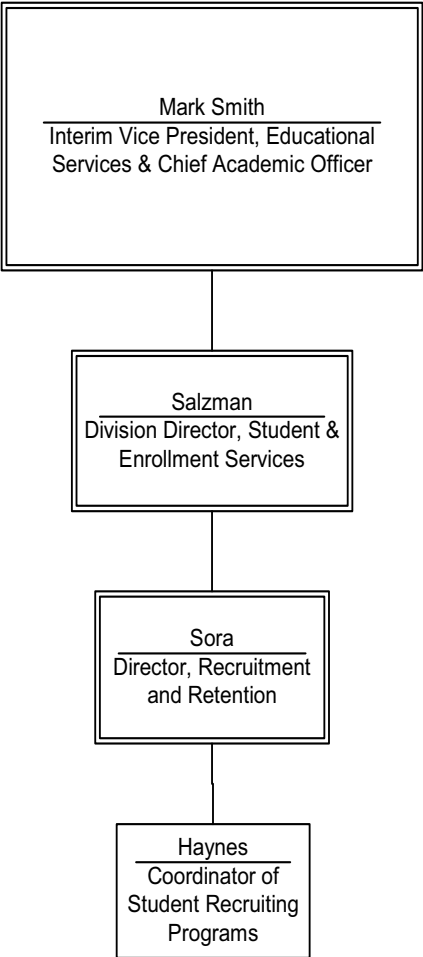
Schey
Associate
Director,
Financial Aid

Anderson
Olivares, L.
Call Takers, PT

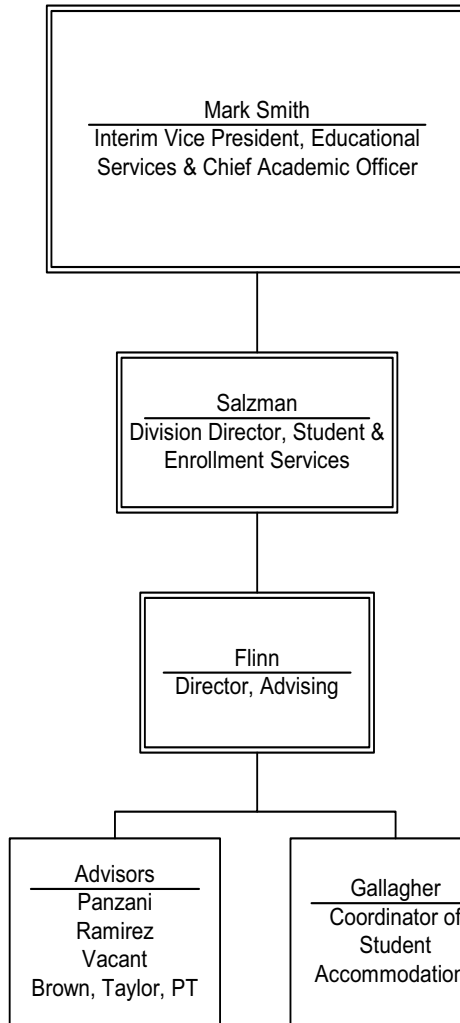
Advisors
Culwell
Goodman
Jimenez

Specialist
Ollison

Recruitment and Retention



Advising



Testing

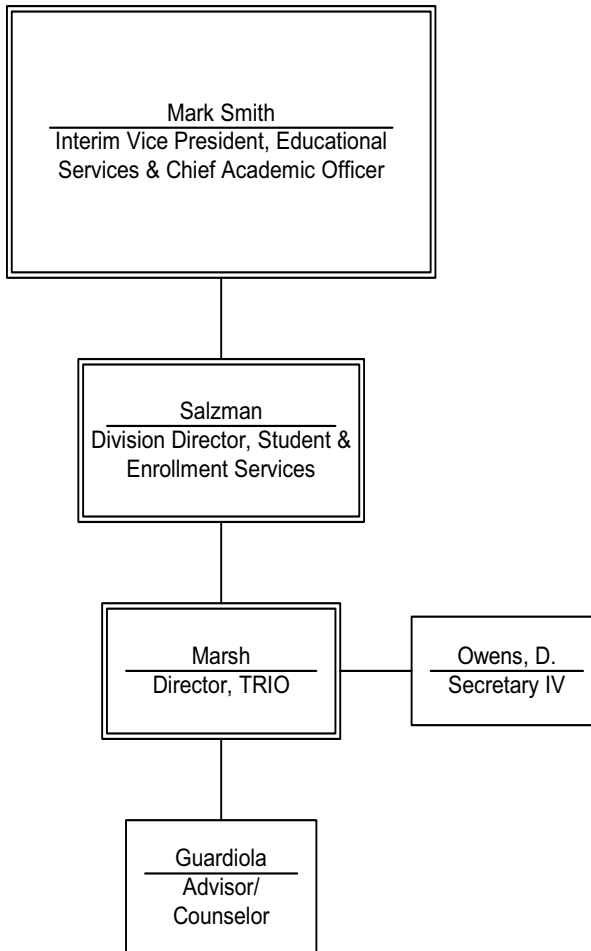
Mark Smith
Interim Vice President, Educational
Services & Chief Academic Officer

Salzman
Division Director, Student &
Enrollment Services

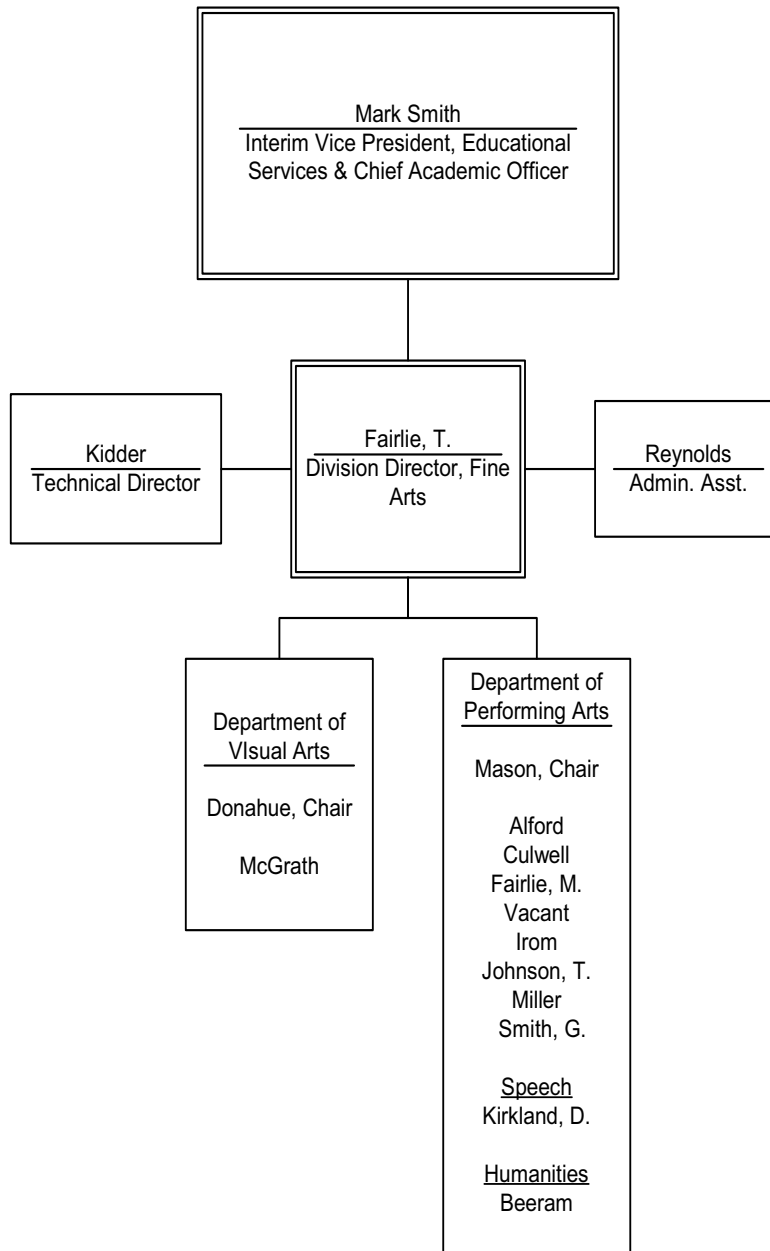
Machalek
Director, Testing

Ybarra
Specialist

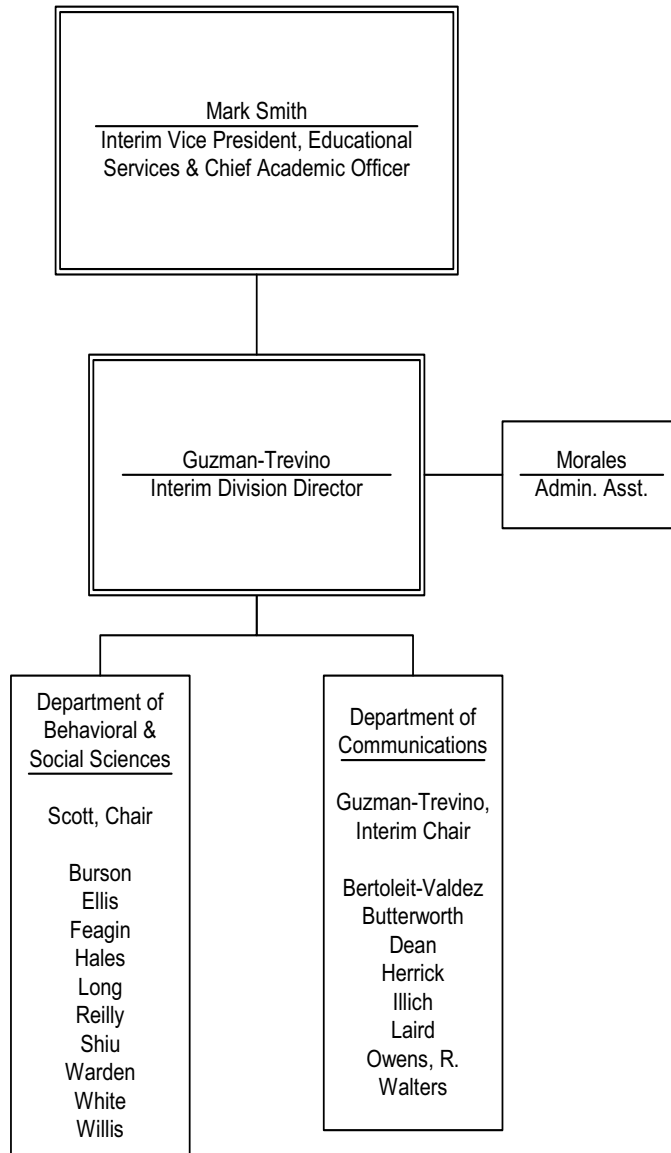
TRIO



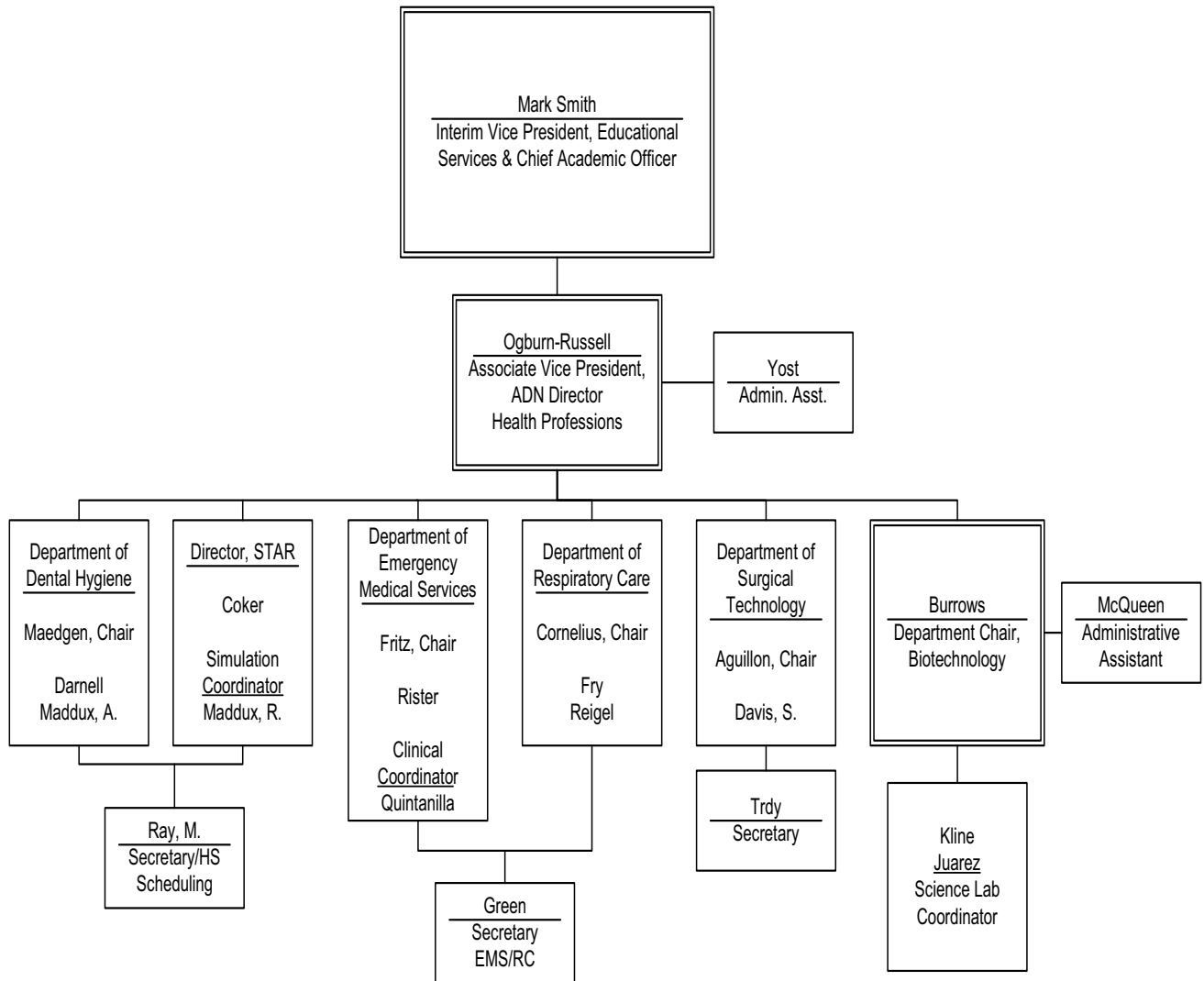
Division of Fine Arts



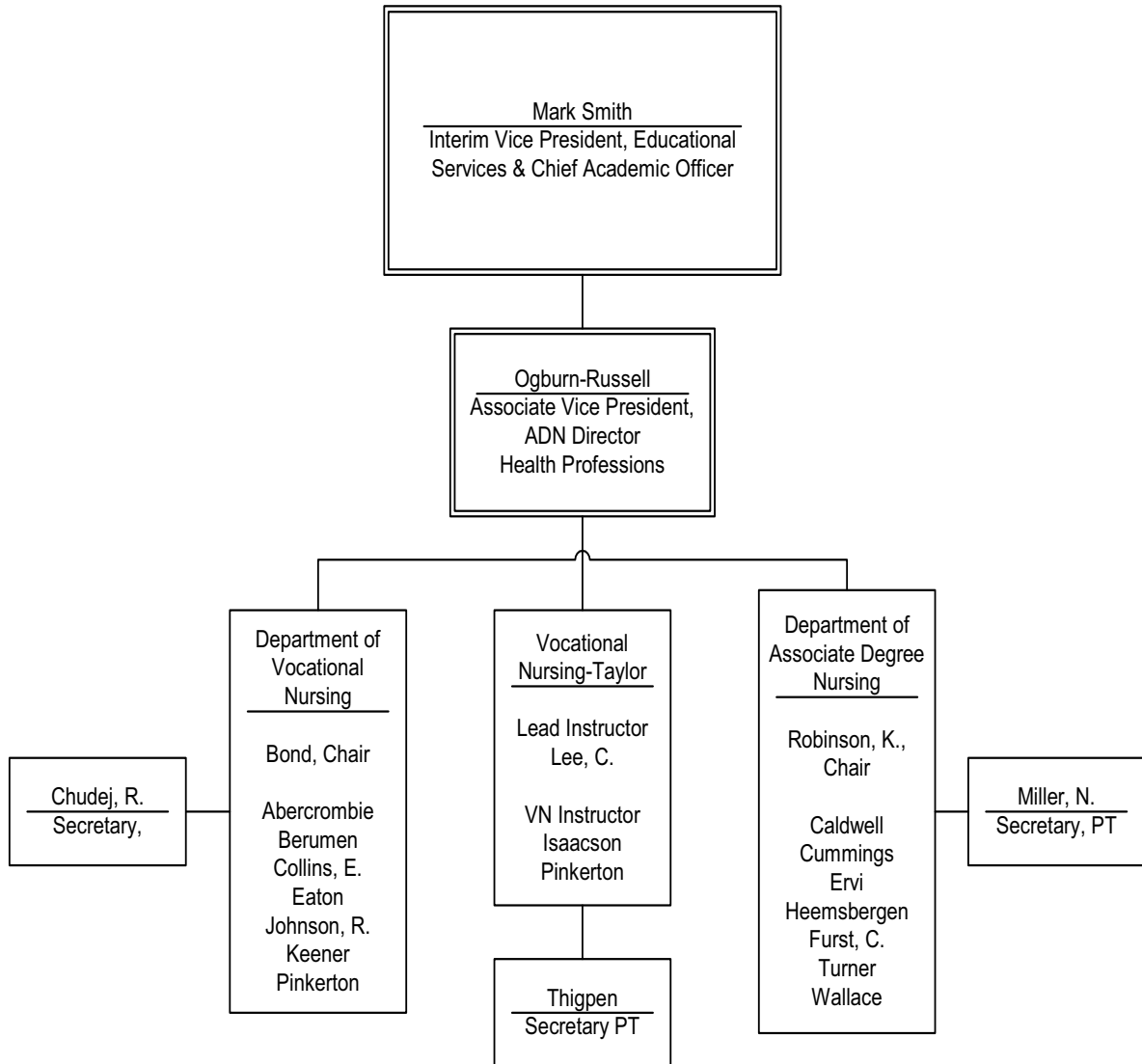
Division of Liberal Arts



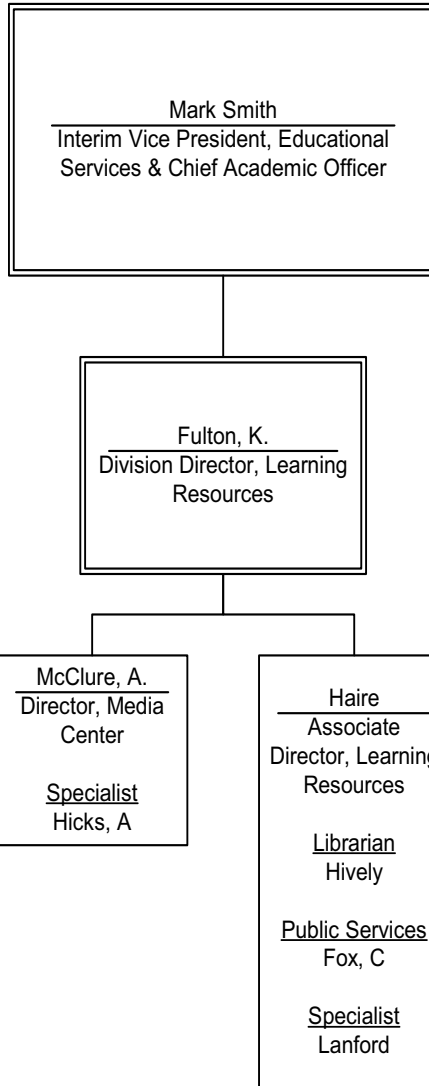
Division of Health Professions



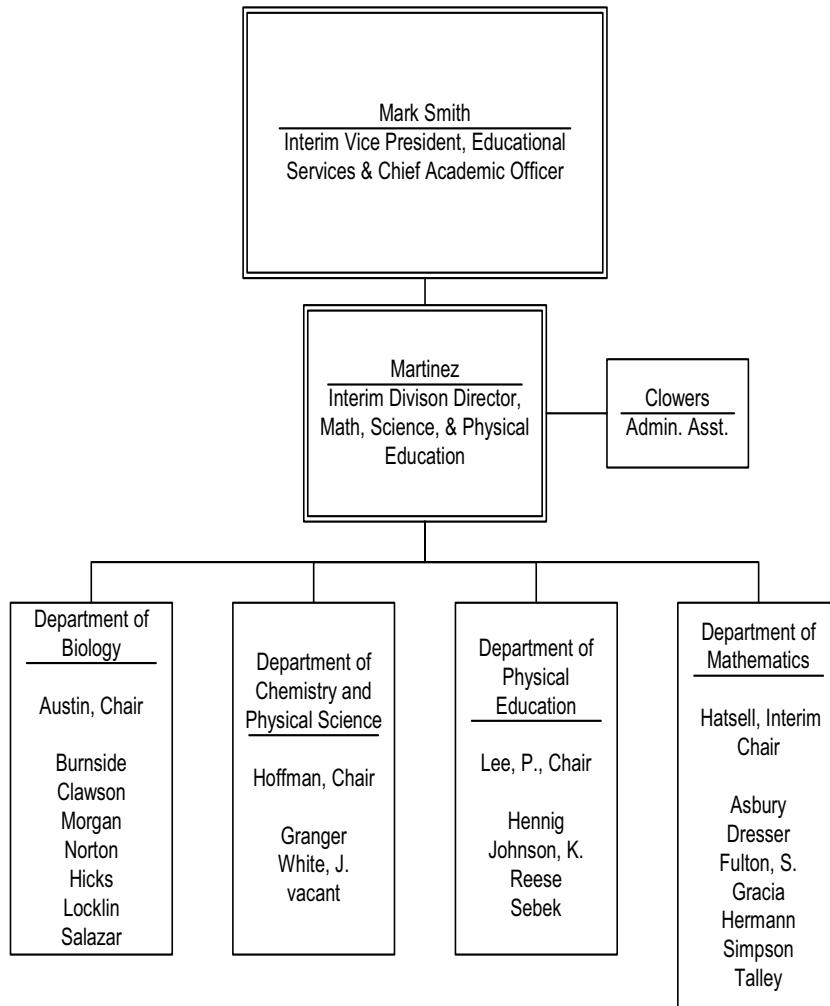
Division of Health Professions



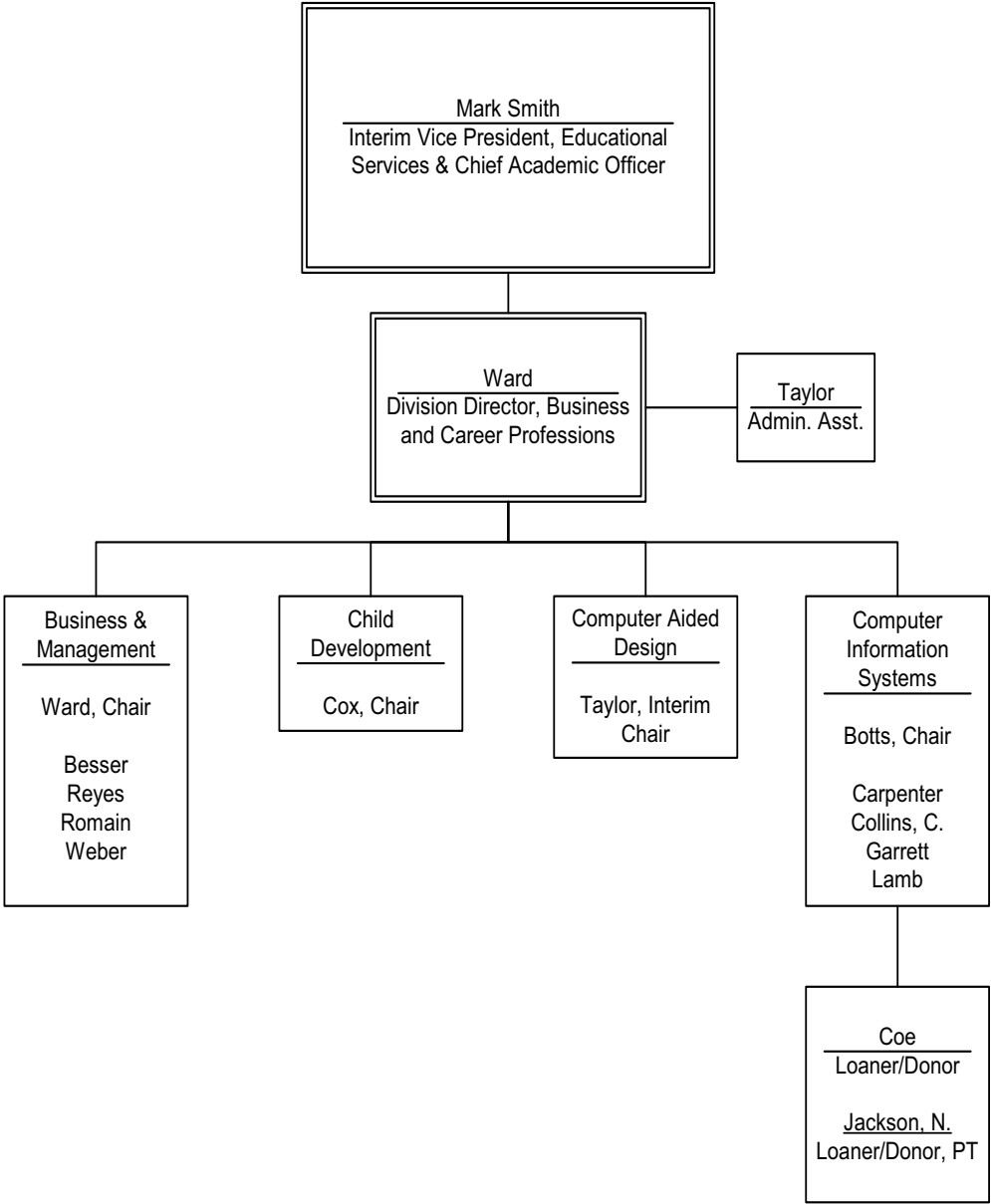
Division of Learning Resources



Division of Mathematics, Science, and Physical Education

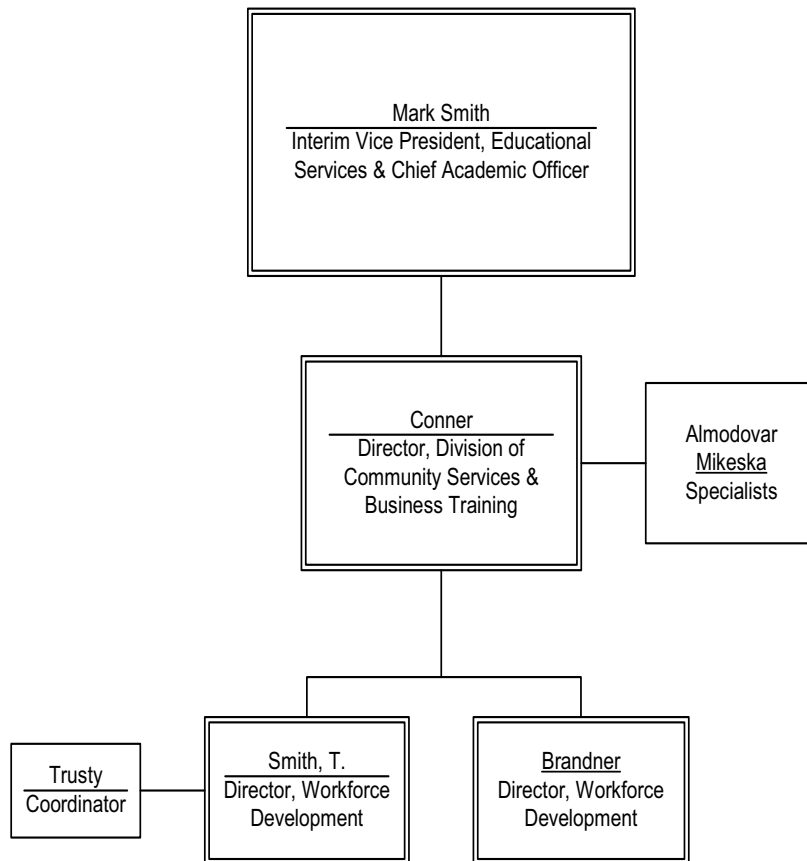


Division of Business and Career Professions

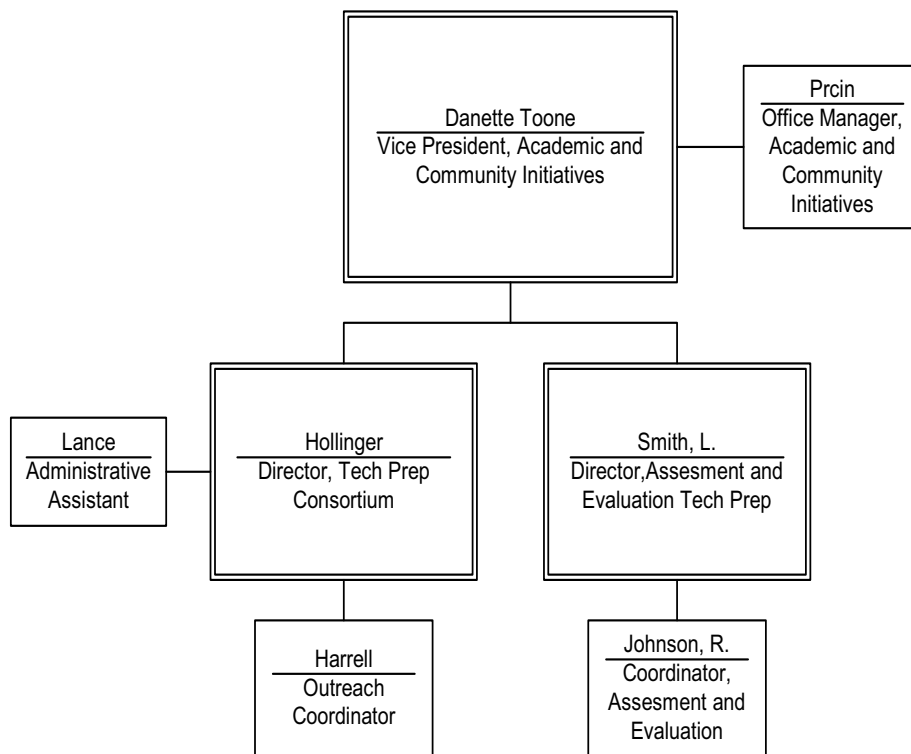




Div. of Community Services and Business Training

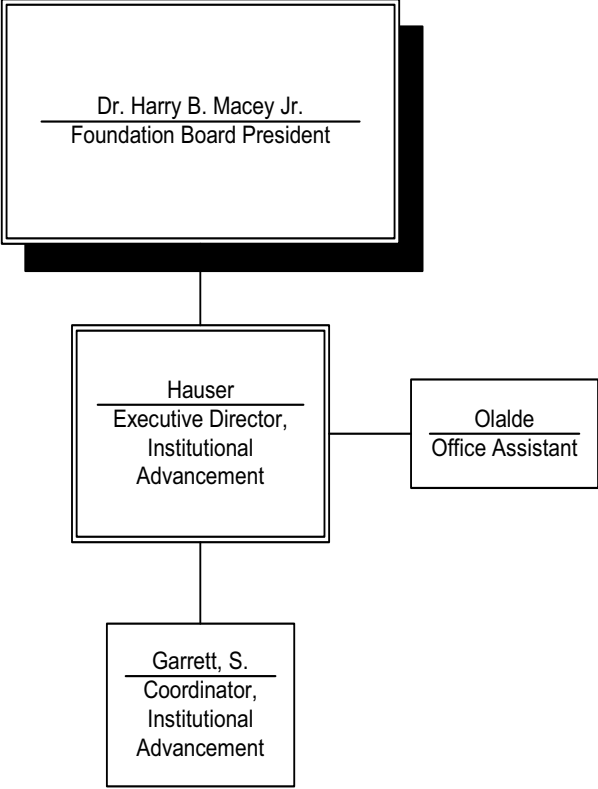


Academic and Community Initiatives/Tech-Prep

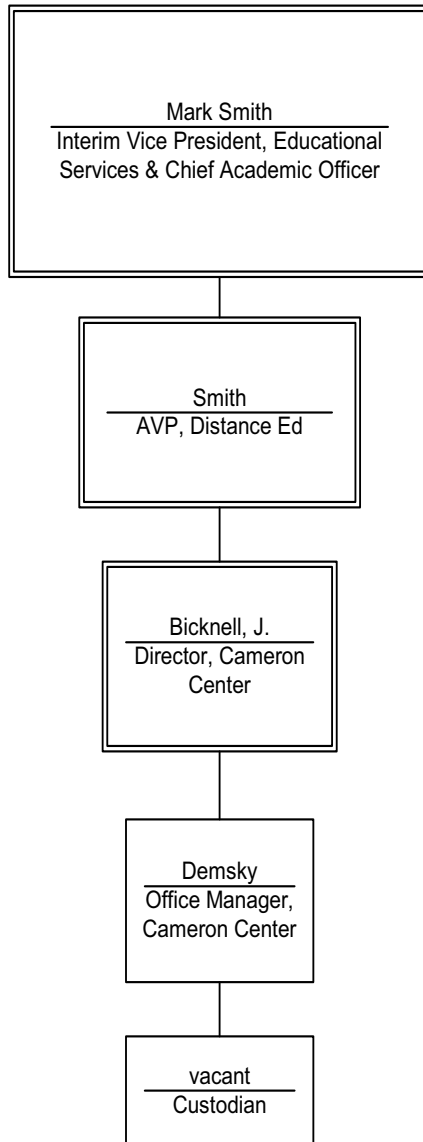




Temple College Foundation



Cameron Center



Taylor Center

