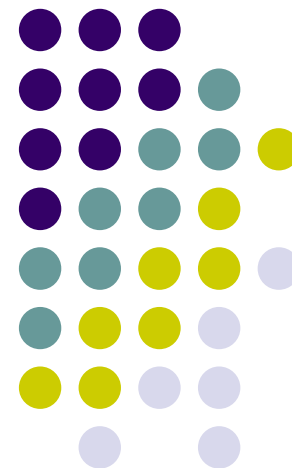


# Program Review

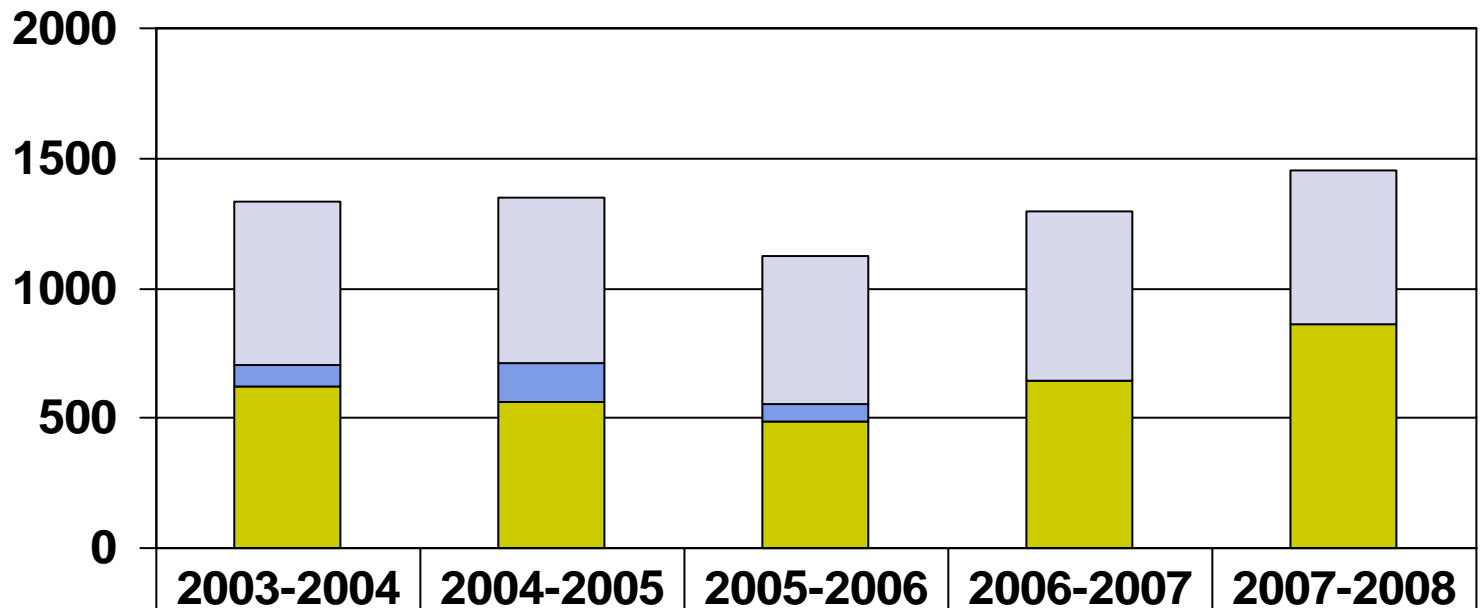
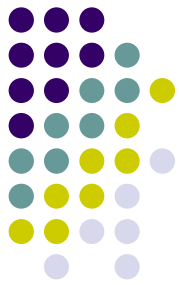
---

## Chemistry and Physical Sciences



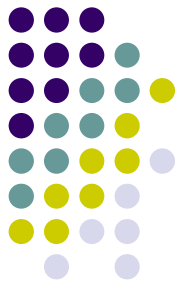
February 18, 2009

# Enrollment PY 2004-PY2008



ENVR/PHYS	627	633	568	647	590
GEOL	86	154	66		
CHEM	621	561	488	646	865

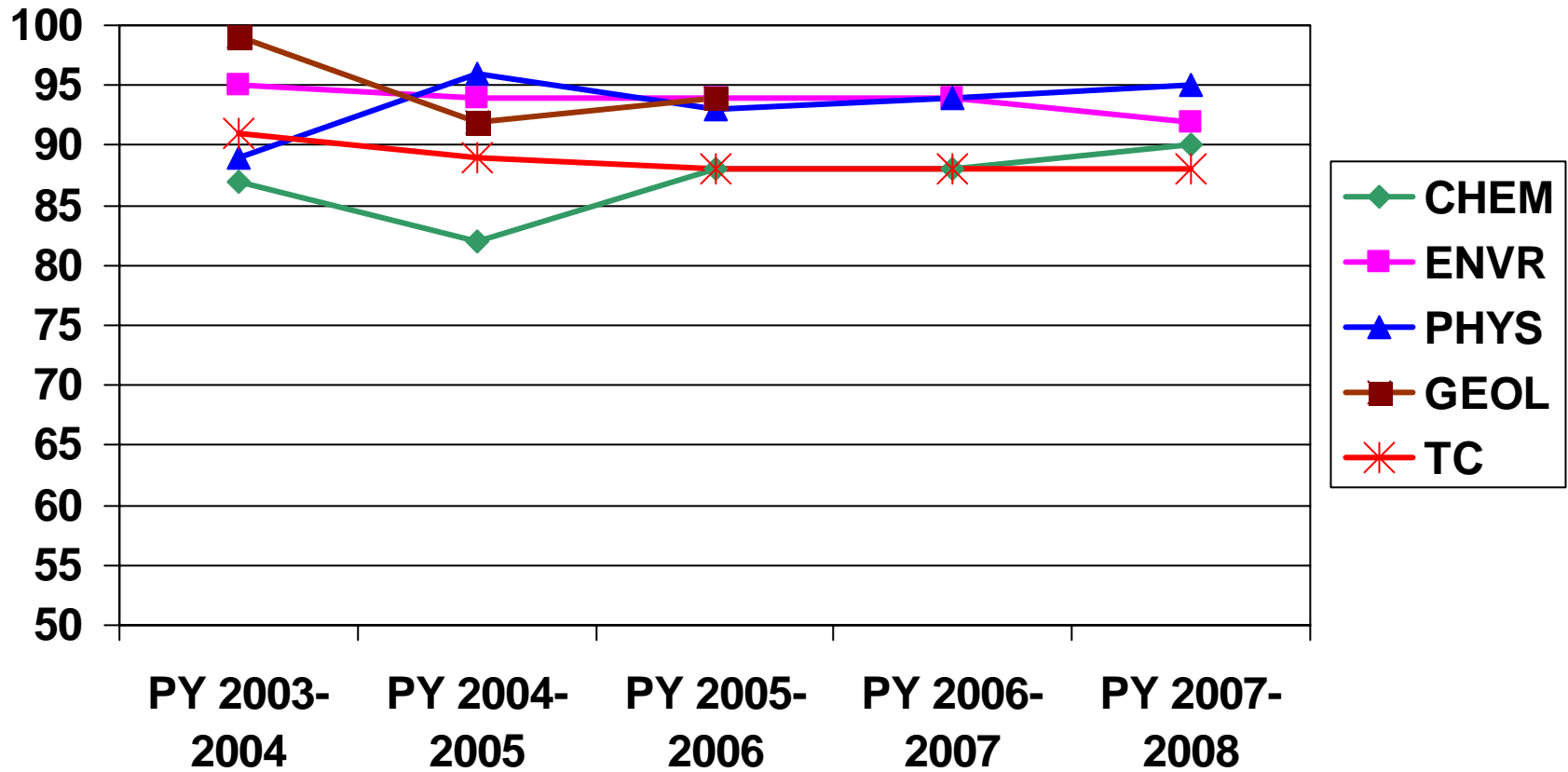
# Sections, Class Size, and Semester Credit Hours



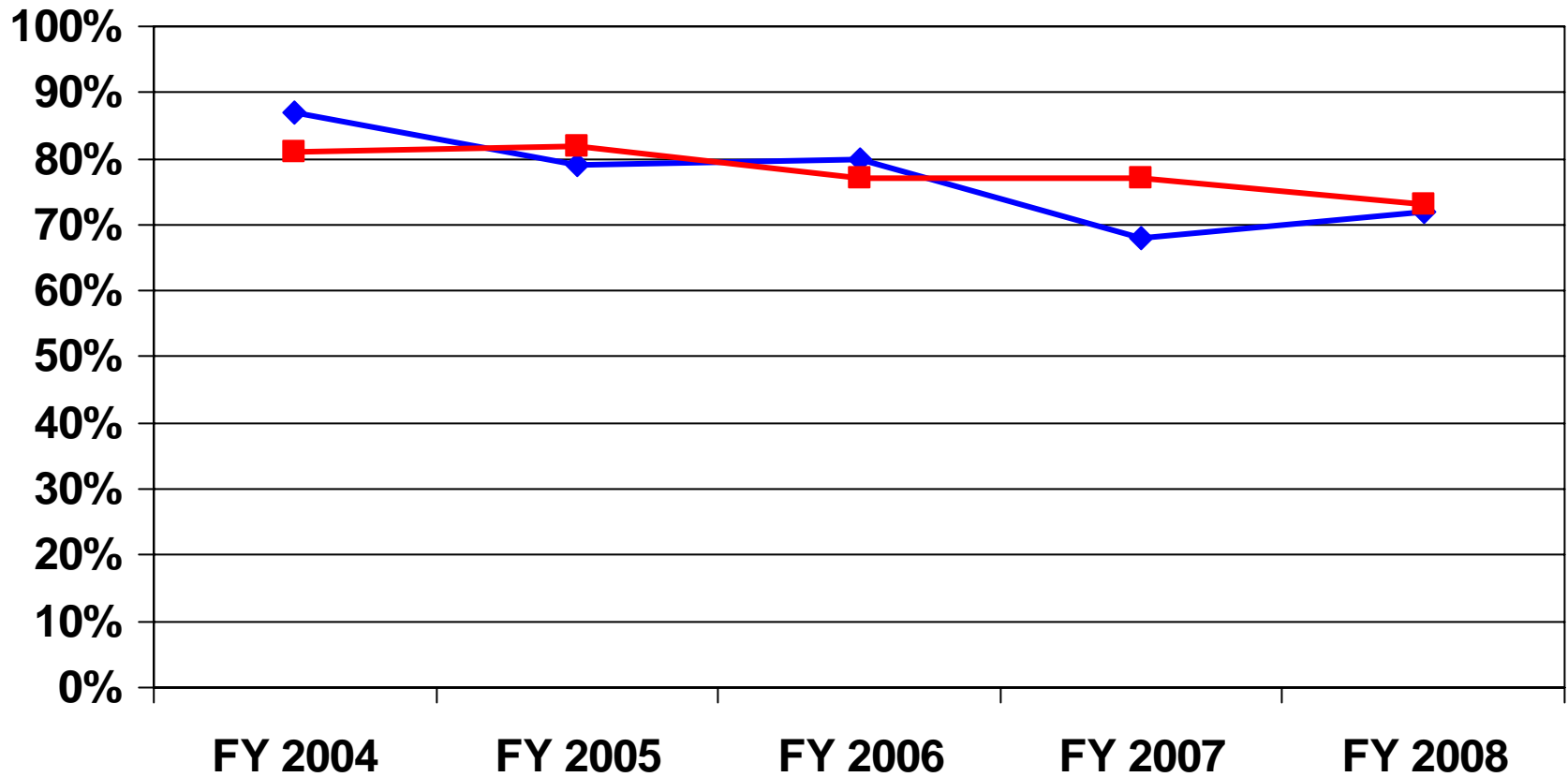
Program Year	Number of Sections	Ave Class Size	Semester Credit Hours
2003-2004	67	20	3,142
2004-2005	69	20	3,123
2005-2006	62	18	2,704
2006-2007	70	18	3,002
2007-2008	71	20	3,319

# Retention Trends

(end of course contact hours  
divided by census day contact hours)



# Income to Cost Ratio (includes indirect cost)

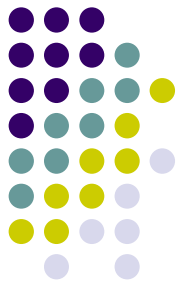


# Department Characteristics



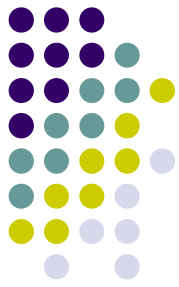
- 4 full-time faculty members and 5 part-time adjunct instructors
- The Chemistry and Physics Department offers courses in Chemistry, Environmental Science, Physics, and Astronomy. The department offers courses at the main Temple campus, the Taylor Center, on-line, and as dual credit classes. The wide variety of science classes are designed to meet the needs of transfer students, various allied health curricula, and students pursuing the Associate of Arts or Applied Science Degrees.

# Facilities



- New laboratory and office space in the SLB
- Lecture classrooms are NOT available for chemistry, environmental science or physics in the SLB. Therefore, lecture rooms and some office space for all 3 of the above disciplines must be provided for in the renovated NSB.
- Laboratory and storage space/rooms for physics, environmental science and geology must be provided for in the renovated NSB.

# Facilities



- TBI: chemistry laboratory space is limited to 4 sections (24 students per section); no physics or geology set-up is available
- TCAT: chemistry laboratory space is limited to 4 sections (24 students per section); no physics or geology set-up or lab space is available



# Other Relevant Information

- Future plan is to develop a Geology curriculum
- 2+2 program with TAMU
- Physics Fun Day
- Lab coordinator
- Challenges
  - Courses transferring to UMHB

